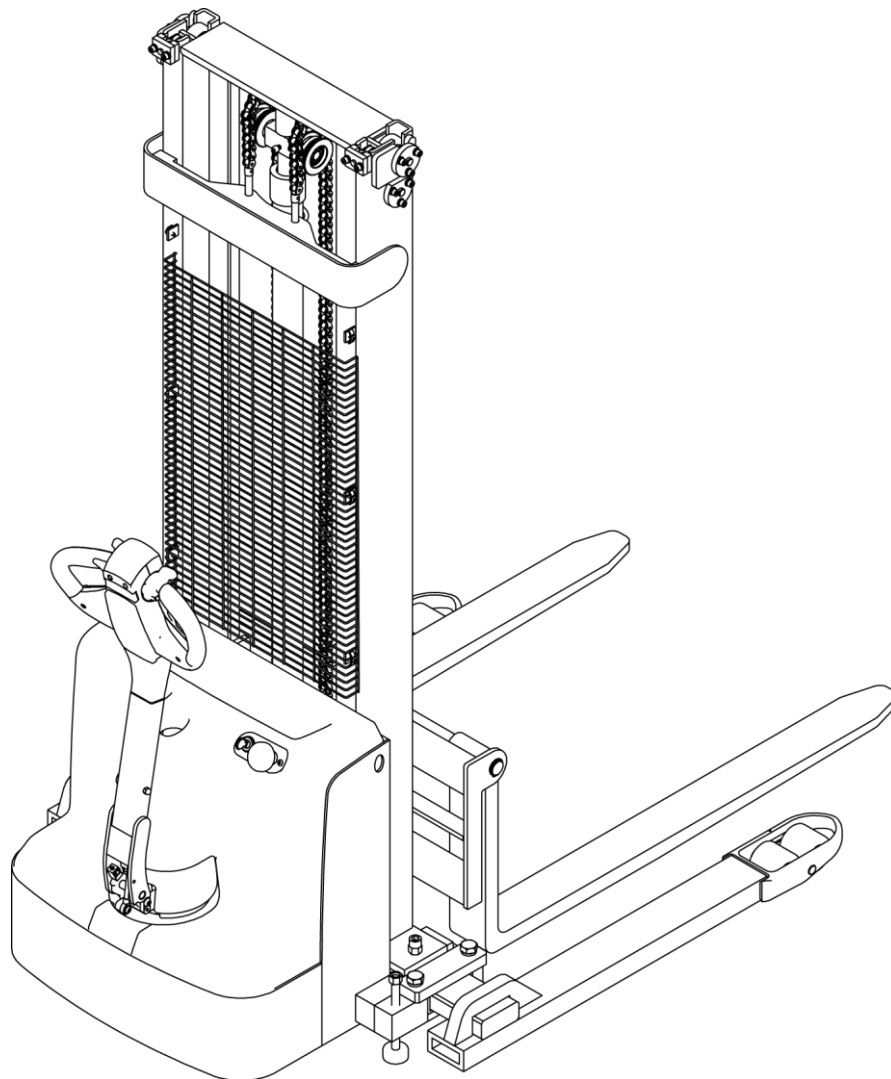


## Part Manual

### EB13E SERIES---Walkie Electric Stacker

EB13E/EB13E-138/EB13E-Li/EB13E-138Li/BE13E-145Li

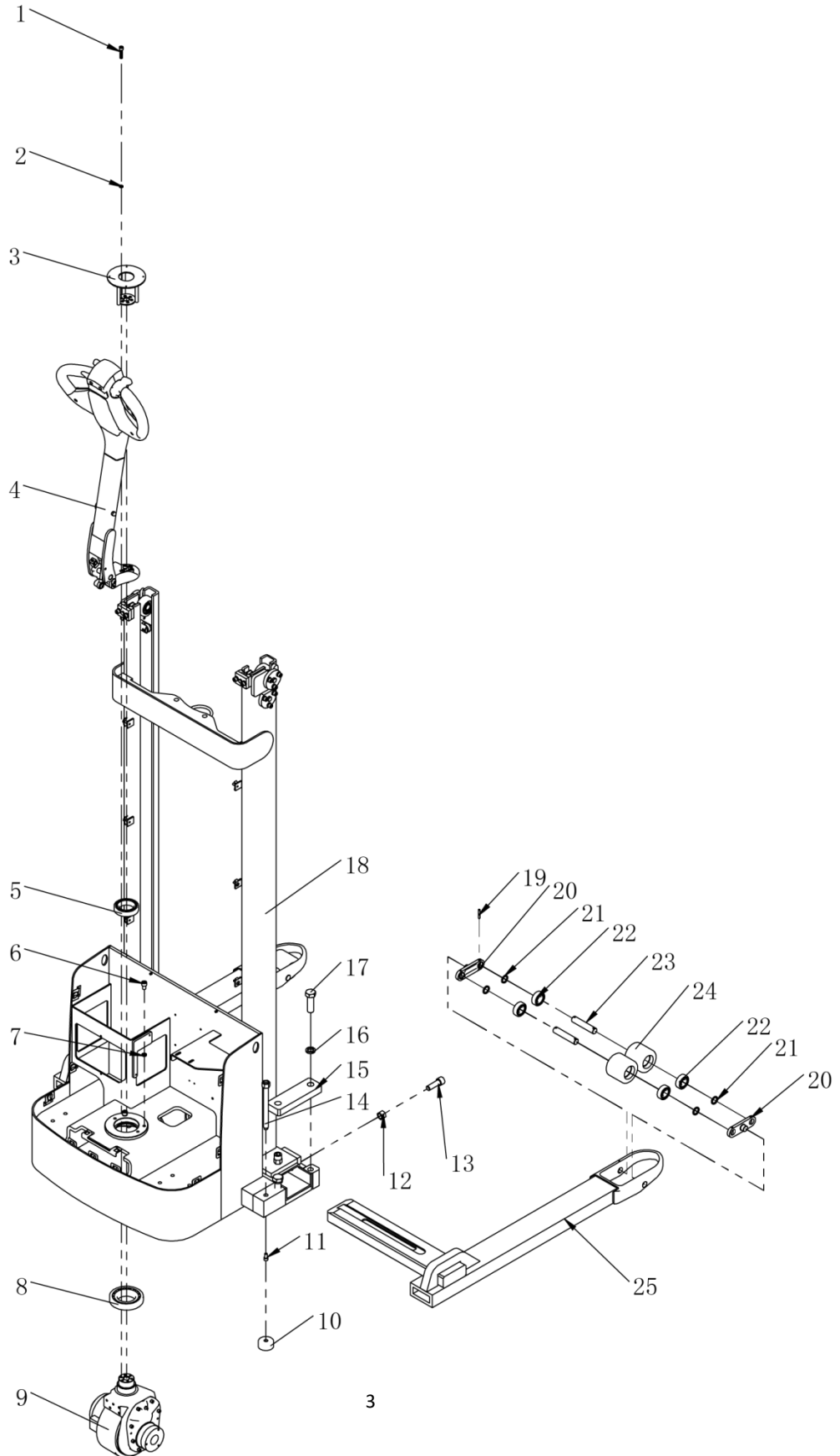


## Content

<b>1. The body system.....</b>	<b>2</b>
1.1 The frame system.....	2
1.2 Cover Assembly.....	5
<b>2. Driving system.....</b>	<b>6</b>
2.1 Drive assembly.....	6
<b>3. Operating system.....</b>	<b>8</b>
3.1 Operating handle assembly.....	8
<b>4. Hydraulic system.....</b>	<b>10</b>
4.1 Hydraulic system.....	10
4.1 Hydraulic system.....	11
<b>5. Control system.....</b>	<b>12</b>
5.1 Electrical assembly.....	12
5.1 Electrical assembly.....	13
<b>6. Lifting system.....</b>	<b>14</b>
6.1 Lifting system.....	15
6.2 Fork holder.....	16
6.2 Fork holder.....	17

# 1. The body system

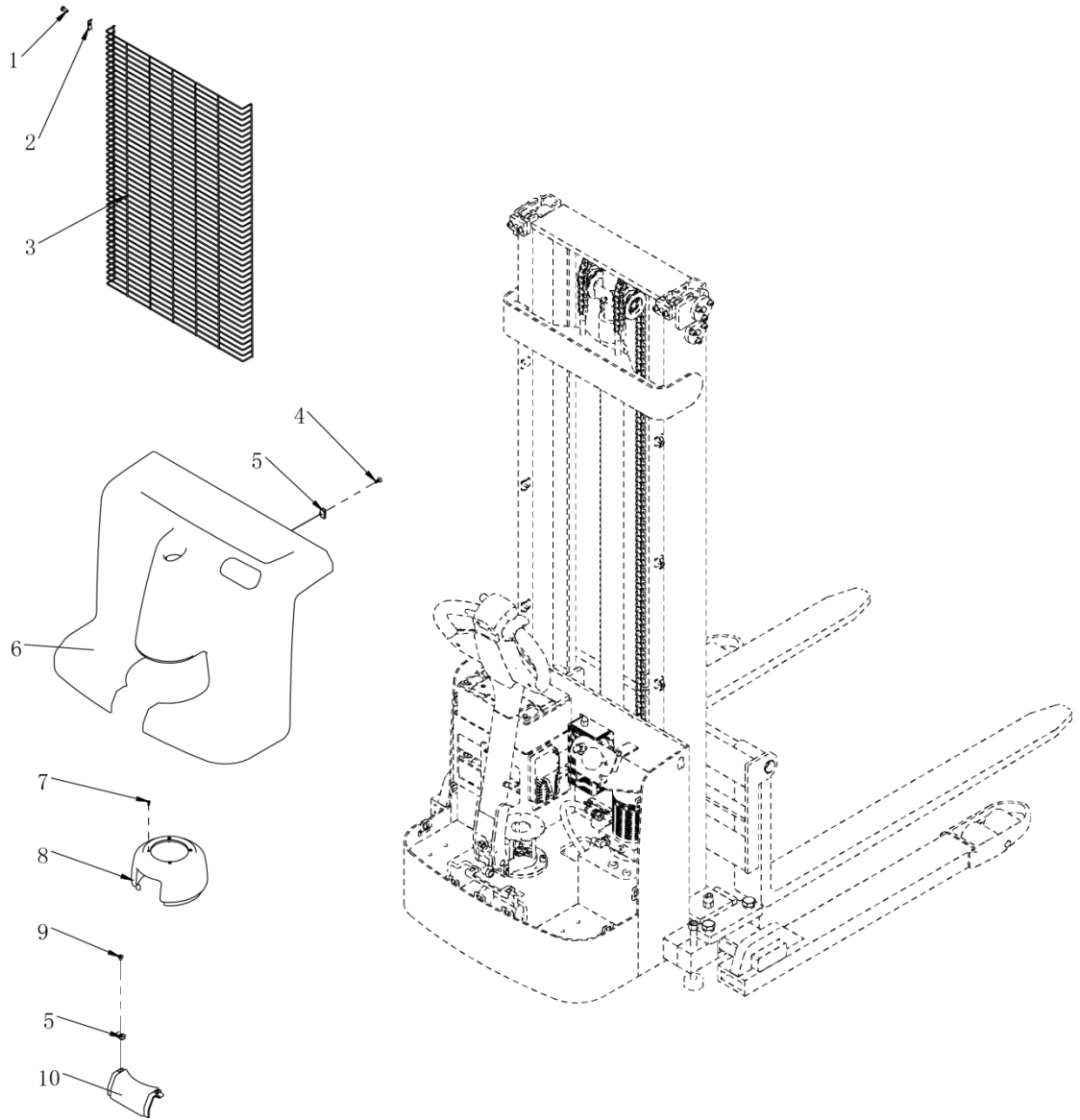
## 1.1 The frame system



## 1.1 The frame system

No.	Code	Description	Specification	QTY	Remark
1	GB/T 70.1-2000	Hexagon socket head cap screws	M8×35	6	
2	GB/T 93-1987	Spring Washer	8×2.1	26	
3	SL20GH-01.4	Enclosure mounting bracket		1	
4	SL20GE-01.2.2	Handlebar assembly		1	
5	GB/T 276-94	Deep groove ball bearing	6010	1	
6	GB/T 70.1-2000	Hexagon socket head cap screws	M10×16	2	
7	GB/T 93-1987	Spring Washer	10×2.6	3	
8	GB/T 297-94	Tapered roller bearing	30212	1	
9	NL0.75KW-S / SJ001	Horizontal Driving		1	
10	CL12JY-01.4	Pad		2	
11	GB/T 70.1-2000	Hexagon socket head cap screws	M8×16	4	
12	GB/T 41-2000	Hexagon nut	M16	4	
13	GB/T 70.1-2000	Hexagon socket head cap screws	M16×50	4	
14	CL12JY-01.3	Screw welded		2	
15	CL12JY-01.5	Pressing plate		2	
16	GB/T 93-1987	Spring Washer	20×5	4	
17	GB/T 5783-2000	Hexagon bolt full thread	M20×65	4	
18	CL15GHY-01.01	Main frame welded		1	
19	GB/T 879.1-2000	Elastic cylindrical pin	5×35	8	
20	DFL25.1-14D	Connecting plate		4	
21	SL20.1-9	Washer		8	
22	GB/T 276-94	Deep groove ball bearing	6204	8	
23	CL10-4H	Front wheel axle (2)		4	
24	CL10-5	Small wheel		4	
25	CL12JY-01.2	Fixed leg welded		2	One piece of symmetry

## 1.2 Cover Assembly

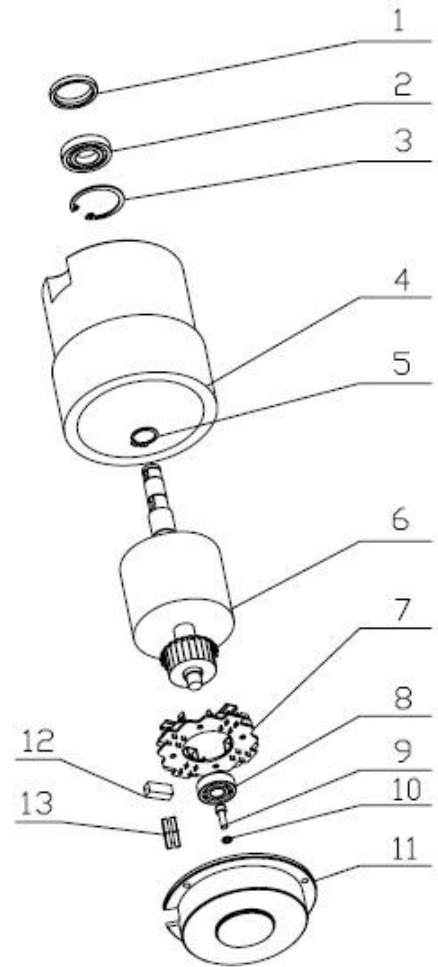
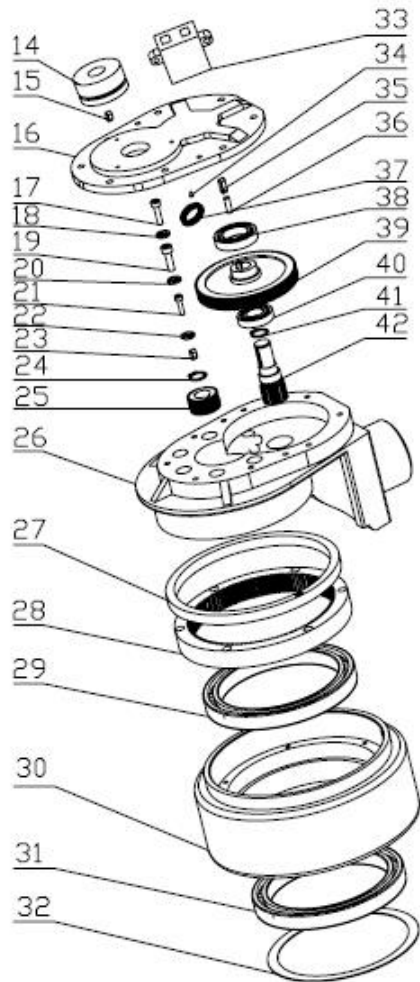


## 1.2 Cover Assembly

No.	Code	Description	Specification	QTY	Remark
1	GB/T 818-2000	Cross recessed pan head screw	M6×16	6	
2	SPN10.0-6	Protective cover Clamp		6	
3	SPN1016.0-4	Protective cover		1	
4	GB/T 70.3-2000	Hexagon socket countersunk head screw	M6×16	2	
5		M6 Spring snap nut		4	
6	SL20GH-03.1	Distribution box cover		1	
7	GB/T 818-2000	Cross recessed pan head screw	M4×10	4	
8	SL20GH-01.7	Handle cover		1	
9	GB/T 70.3-2000	Hexagon socket countersunk head screw	M6×10	2	
10	SL20GH-03.3	Distribution box cover sealing plate		1	

## 2. Driving system

## 2.1 Drive assembly



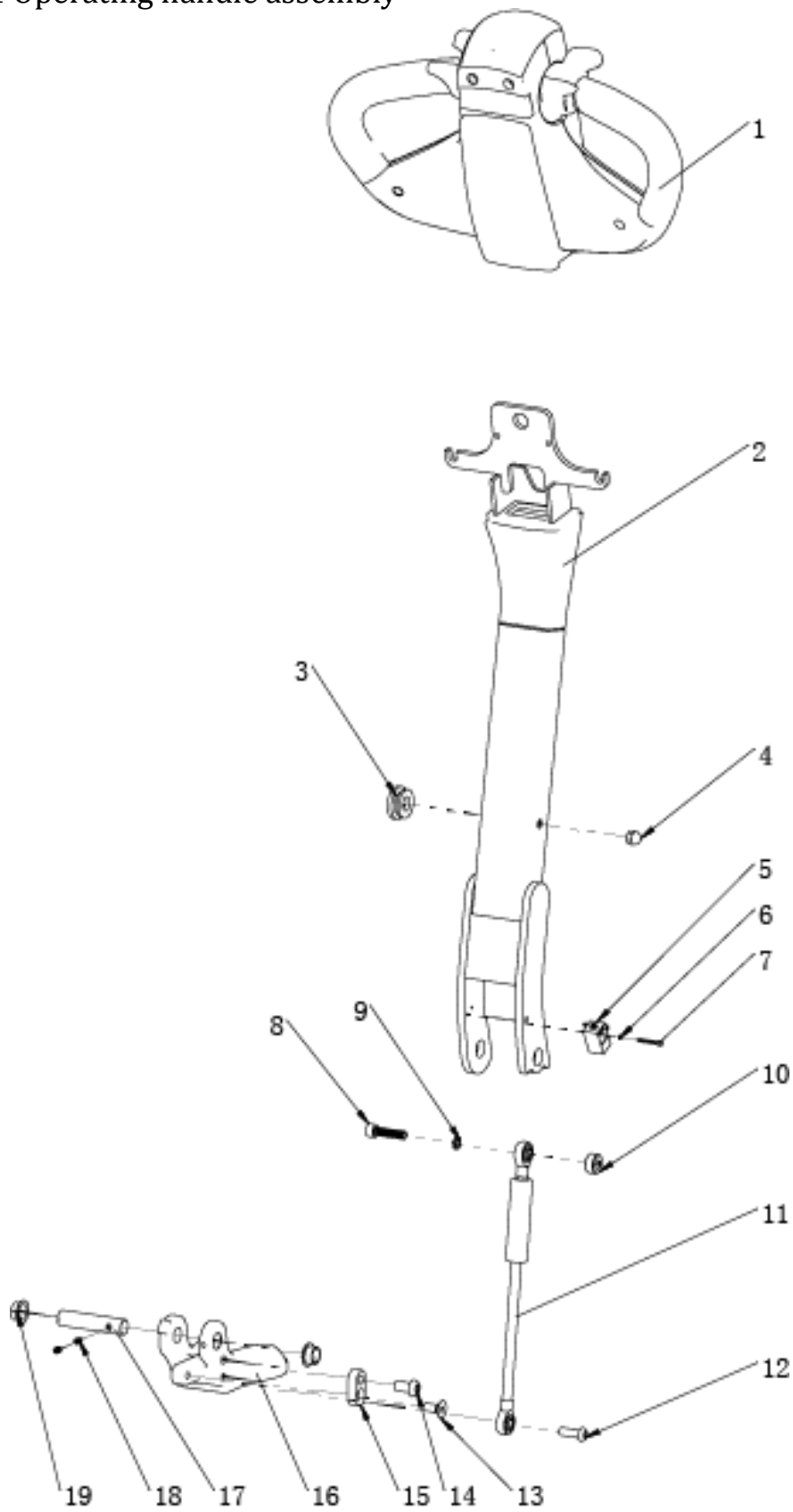
## 2.1 Drive assembly

No.	Code	Description	Specification	QTY	Remark
1	GB/T13871-92	Oil Seal	TC $\phi$ 42 $\times$ $\phi$ 20 $\times$ 7	1	
2	GB/T276-94	Bearing	6004RS	1	
3	GB893.1-86	Circlip for hole	$\Phi$ 42	1	
4	ZD-HZDC-310-002	Case component		1	
5	GB894.1-1986	Circlip for shaft	$\Phi$ 15	1	
6	ZD-HZDC-320-002	Rotor		1	
7	ZD-HCDC-340-001	Brush yoke parts		1	
8	GB/T276-94	Bearing	6201RS	1	
9	GB/T70.1-2000	Socket head cap screws	M5 $\times$ 16	3	
10	GB/T93-1987	Spring Washer	$\Phi$ 5	3	
11	ZD-HCDC-361-001	Rear end cap		1	
12	ZD-HCDC-330-001	Brush		4	
13	ZD-HCDC-380-001	Protective ring		1	
14	ZD-HZDC-362-001	Brake		1	
15	GB/T1096-2003	Button	5 $\times$ 5 $\times$ 8	1	
16	1115-200001-0B	Case cover		1	
17	GB/T70.1-2000	Socket head cap screws	M6 $\times$ 20	8	
18	GB/T93-1987	Spring Washer	$\Phi$ 6	8	
19	GB/T70.1-2000	Socket head cap screws	M8 $\times$ 35	5	
20	GB/T93-1987	Spring Washer	$\Phi$ 8	5	
21	GB/T70.1-2000	Socket head cap screws	M5 $\times$ 20	6	
22	GB/T93-1987	Spring Washer	$\Phi$ 5	6	
23	GB/T1096-2003	Button	5 $\times$ 5 $\times$ 14	1	
24	GB894.1-1986	Circlip for shaft	$\Phi$ 16	1	
25	1115-200005-0B	Small helical		1	
26	1121-210001-00	Case body		1	
27	GB/T13871-92	Oil Seal	TC $\phi$ 155 $\times$ $\phi$ 172 $\times$ 10	1	
28	1115-200002-0B	Straight tooth ring		1	
29	GB/T276-94	Bearing	61824-2RS	1	
30	1115-220000-0B	Drive wheel		1	
31	GB/T276-94	Bearing	61824-2RS	1	
32	6118003	Dustband		1	
33	JX6-2	Junction Box		1	
34	JB/T7940.1-1995	Forced filling oil cup		1	
35	GB/T1096-2003	Button	5 $\times$ 5 $\times$ 20	1	
36	GB/T119.1-2000	Locating pin	$\phi$ 5 $\times$ 15	2	
37	GB/T13871-92	Oil Seal	TC $\phi$ 16 $\times$ $\phi$ 28 $\times$ 7	1	
38	GB/T276-94	Bearing	61905-2Z	1	
39	1115-200004-0B	Big bevel		1	
40	GB/T276-94	Bearing	16003-2Z	1	
41	GB894.1-1986	Circlip for shaft	$\Phi$ 15	1	
42	1115-200003-0B	Spur pinion		1	

### 3. Operating system



### 3.1 Operating handle assembly

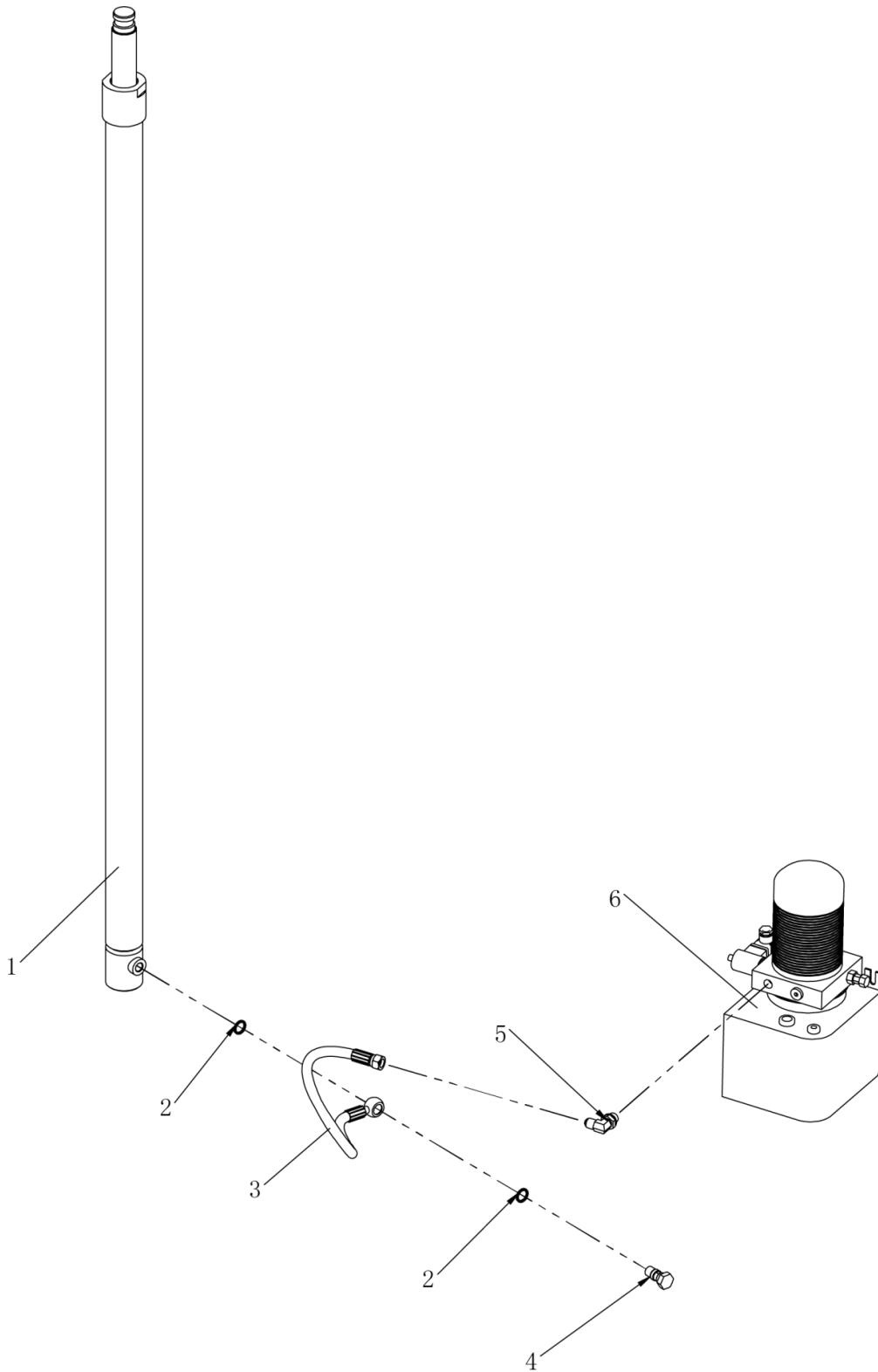


3.1 Operating handle assembly

No.	Code	Description	Specification	QTY	Remark
1	T606-5B	DT handle		1	
2	SL20GE-01.2.2.1	Handle bar welding		1	
3	CS1232.8-1	Shock absorber		1	
4	GB 923-88	Cap nut	M8	1	
5	CJF17-05PA	proximity switch		1	
6	GB/T 93-1987	Spring Washer	Φ3	1	
7	GB/T 70.1-2000	Hexagon socket head cap screw	M3×25	2	
8	GB/T 70.1-2000	Hexagon socket head cap screw	M8×35	1	
9	GB/T 93-1987	Spring Washer	Φ8	1	
10	SL13.03-09	Spacer		1	
11	SL20GE-01.2.2.2	Gas spring assembly	290-800N	1	
12	GB/T 70.2-2000	Hexagon socket button head screws	M8×25	1	Black
13	GB/T 70.3-2000	Hexagon socket countersunk head screw	M8×20	1	
14	GB/T 70.2-2000	Hexagon socket button head screws	M10×20	1	
15	SL15GD-02.9.3	Limit block		1	
16	SL20GH-01.2.1	Joint axis	ZC340-570	1	
17	SL13.03-07	Joint axis		1	
18	GB/T 77-2000	Hexagon inner flat end set screw	M6×8	2	
19	TY-02.22	Composite sleeve with shoulder	Φ18×Φ16×10	2	

## 4. Hydraulic system

### 4.1 Hydraulic system

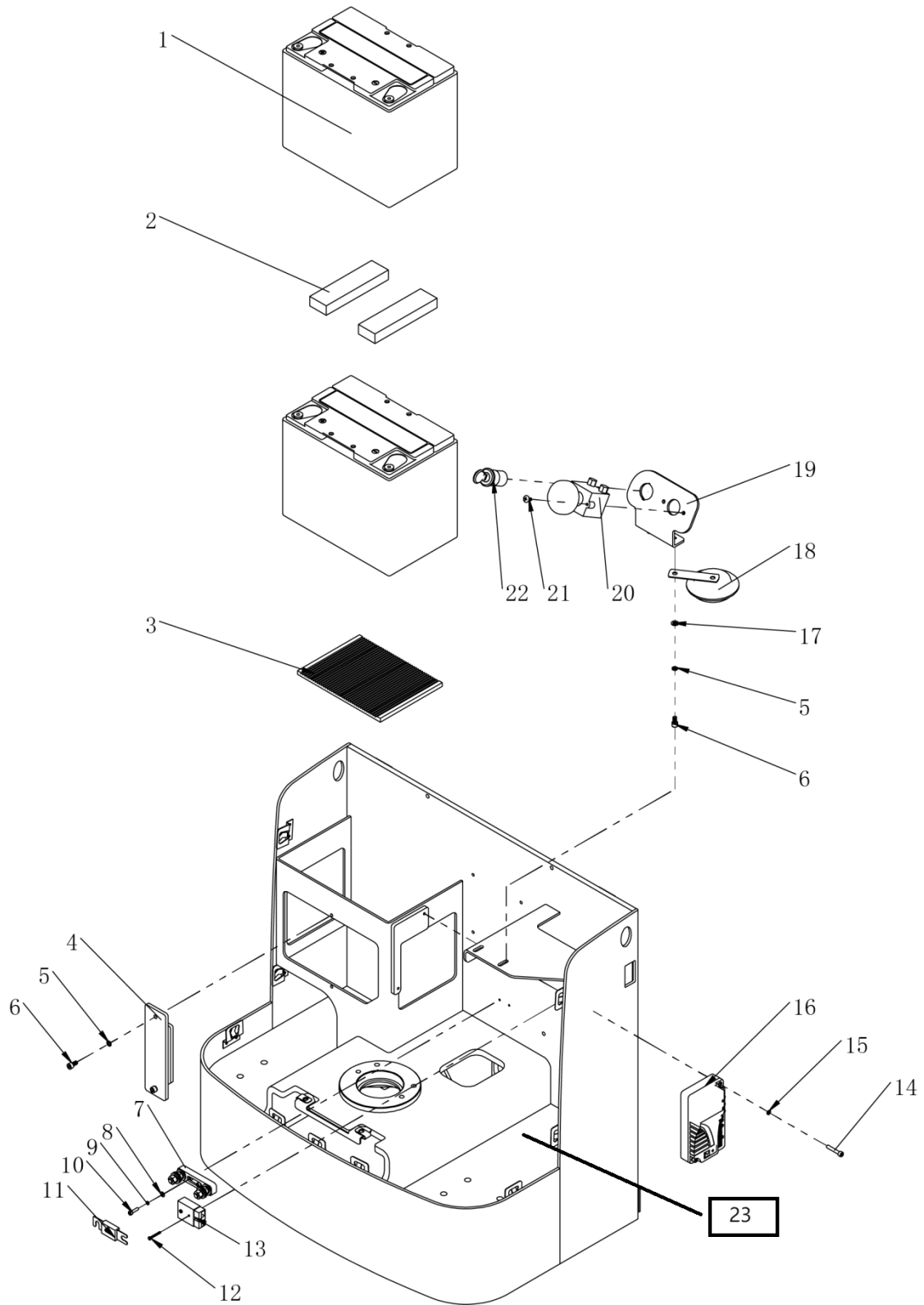


### 4.1 Hydraulic system

No.	Code	Description	Specification	QTY	Remark
1	CLJ1030.05	Cylinder assembly		1	
2	GB982-77	Combination gasket	Φ18	2	
3	CL15GH-01.3	Rubber hose		1	
4	SPN10.8-6	Oil Connection		1	
5	CG1646.05.1-6	Right angle adjustable joint		1	
6	CL15GH-01.2	Pump station assembly		1	

## 5. Control system

## 5.1 Electrical assembly

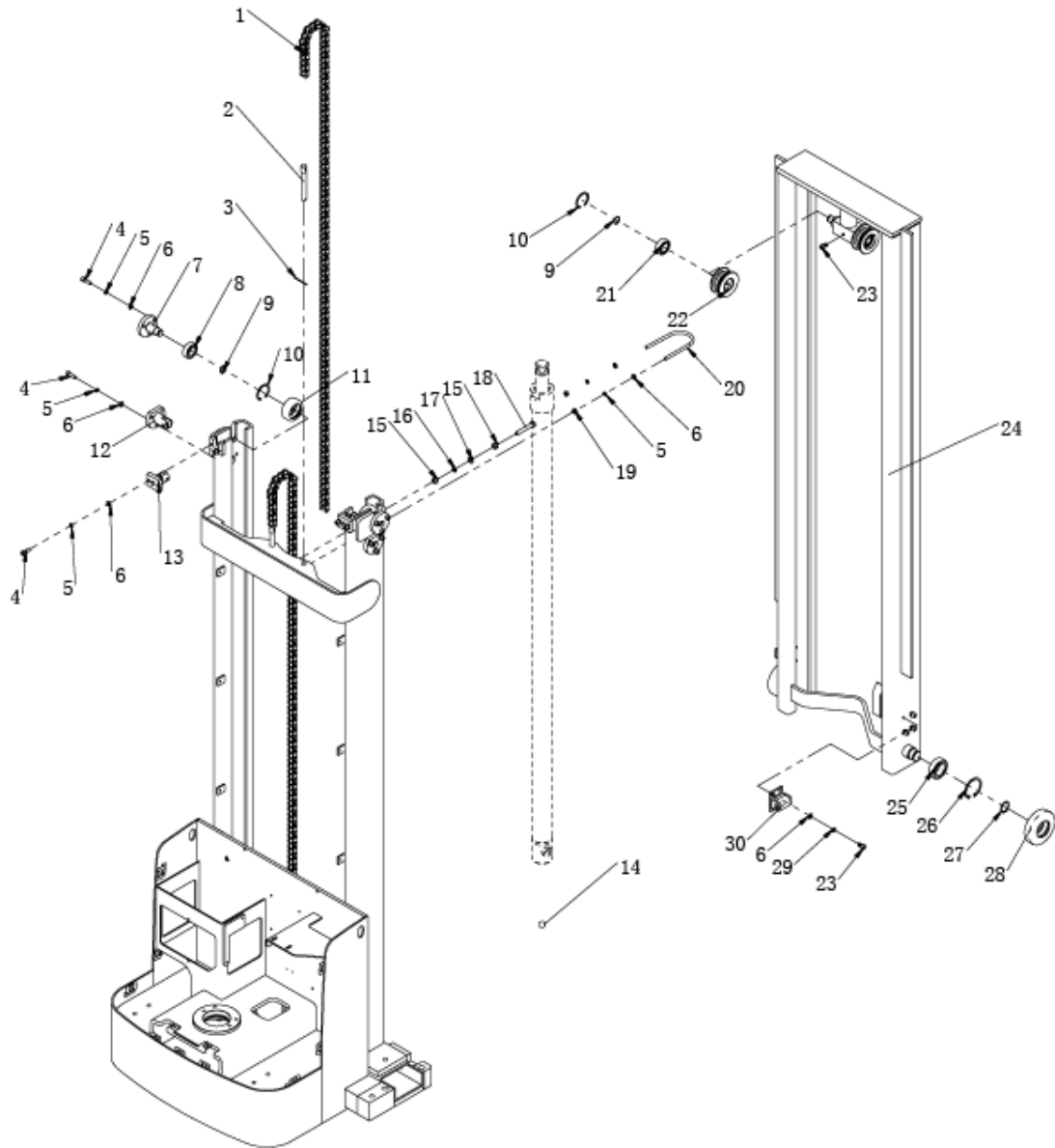


## 5.1 Electrical assembly

No.	Code	Description	Specification	QTY	Remark
1	6-EVF-100	Battery	260*168*21 4	2	
1	24V/60AH	Battery		1	
2	SL20GH-01.8	Rubber Pad		2	
3	SL13.01-07	Battery pad		1	
4	SL20GH-01.5	Battery Baffle		1	
5	GB/T 93-1987	Spring Washer	Φ6	4	
6	GB/T 70.1-2000	Hexagon socket head cap screws	M6×12	4	
7	TY-02.32	Fuse holder		1	
8	GB/T 95-2002	Flat Washer	4×0.8	2	
9	GB/T 93-1987	Standard Spring Washer	4×1.1	2	
10	GB/T 70.1-2000	Hexagon socket head cap screws	M4×16	2	
11	CNP-100A	Fuses		1	
12	GB/T 818-2000	Cross recessed pan head screw	M4×25	2	
13	TSB50A / 600A	Charger socket		1	
14	GB/T 70.1-2000	Hexagon socket head cap screws	M5×30	2	
15	GB/T 93-1987	Spring Washer	5×1.3	2	
16	1212S	Controller		1	
17	GB/T 95-2002	Flat Washer	Φ6	2	
18	DC24-Φ125	Horn		1	
19	SL20GH-01.6	Emergency stop switch mounting plate		1	
20	TY-01.36	ED125-2-1Emergency stop switch		1	
21	GB 973-1976	Large flat head cross screw	M5×12	2	
22	TY-01.17	Key Switch		1	
23	Charger	24V/15A		1	
	Charger	24V/30A-LI		1	

## 6. Lifting system

## 6.1 Lifting system

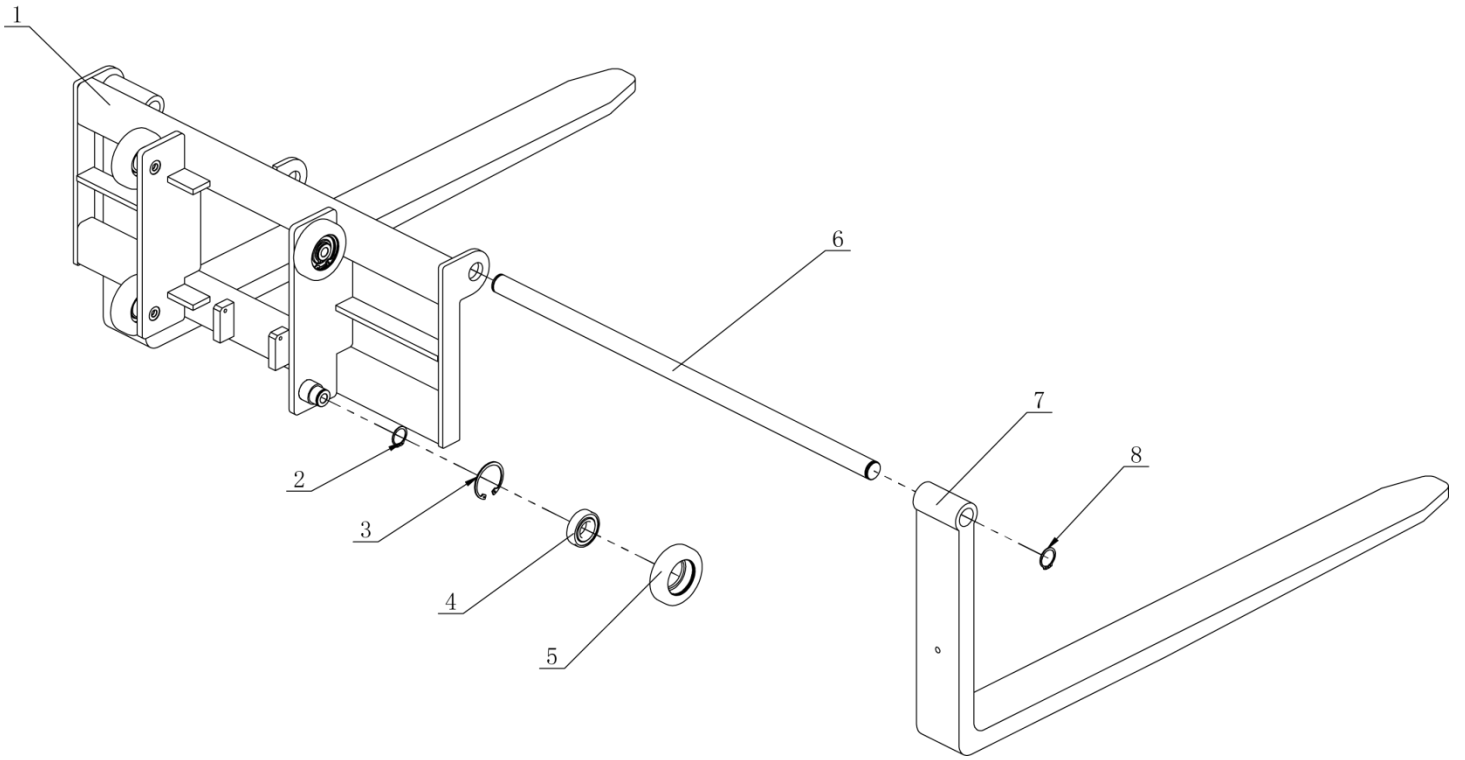


## 6.1 Lifting system

No.	Code	Description	Specification	QTY	Remark
1	SPN10.0-5	Chain	ISO12A	2	
2	SPN10.0-1	The chain tension bar		2	
3	GB/T 91-2000	Split pin	2.5×40	2	
4	GB/T 70.1-2000	Hexagon socket head cap screws	M8×25	16	
5	GB/T 93-1987	Spring Washer	8×2.1	18	
6	GB/T 95-2002	Flat Washer	8×1.6	26	
7	CL10.7.1	Guide wheel shaft seat		2	
8	GB/T 276-94	Deep groove ball bearing	6204-2Z	2	
9	GB 894.2-86	Circlip for shaft	20	2	
10	GB 893.1-86	Circlip for Hole	47	2	
11	CL10.7-3	Guide wheel		2	
12	CL10.9	Left and right limit wheel bracket		2	
13	CL10.8	Real Wheel Limit wheel bracket		2	
14	GB / T308-77	Steel ball	Φ19.05	1	
15	GB/T 41-2000	Hexagon nut	M10	2	
16	GB/T 93-1987	Spring Washer	10×2.6	1	
17	GB/T 95-2002	Flat Washer	10×2	1	
18	GB/T 5781-2000	Hexagon bolt full thread	M10×65	1	
19	GB/T 41-2000	Hexagon nut	M8	2	
20	SPN10.0-2	Cylinder hoop		1	
21	GB/T 276-94	Deep groove ball bearing	6204	2	
22	SPN10.2-5	Sprocket Wheel		2	
23	GB/T 70.1-2000	Hexagon socket head cap screws	M8×16	9	
24	CL12JY-02.1	Inner Frame welding		1	
25	GB/T 276-94	Deep groove ball bearing	6206-2Z	2	
26	GB 893.2-86	Circlip for Hole	62	2	
27	GB 894.2-86	Circlip for shaft	30	2	
28	SPN10.2-1	Roller		2	
29	GB/T 93-1987	Spring Washer	8×2.1	8	
30	CL10.2.1	Guide wheel assembly		2	

## 6.2 Fork holder





## 6.2 Fork holder

No.	Code	Description	Specification	QTY	Remark
1	CL12JY-03.1	Fork holder welding		1	
2	GB 894.2-86	Circlip for shaft	30	4	
3	GB 893.2-86	Circlip for hole	62	4	
4	GB/T 276-94	Deep groove ball bearing	6206-2Z	4	
5	CL10.2-7	roller		4	
6	CL12JY-03.2	Long axis		4	
7	CL12JY-03.3	Forged fork		2	
8	GB894. 1-86	Circlip for shaft	32	2	

**Note: The manufacturer reserves the right to interpret the information and does not provide additional notice for changes.**