

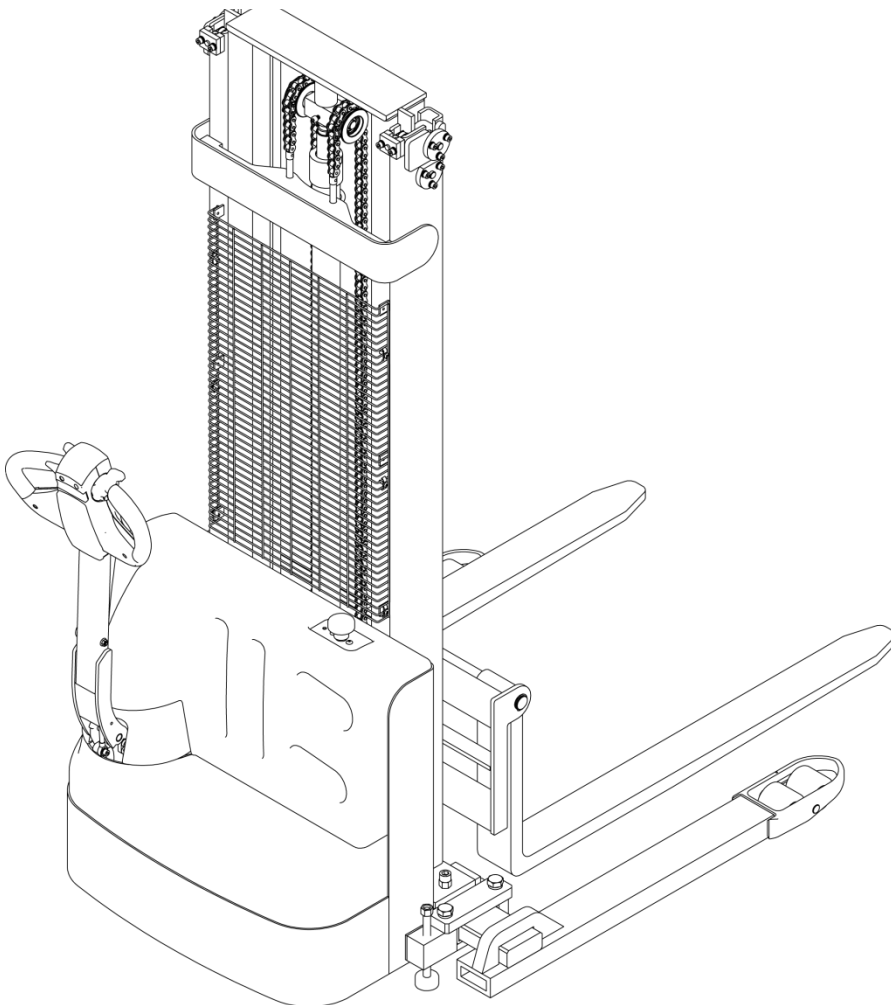
EKKO[®]

MATERIAL HANDLING EQUIPMENT

MOVING AHEAD

EB12E

PARTS MANUAL

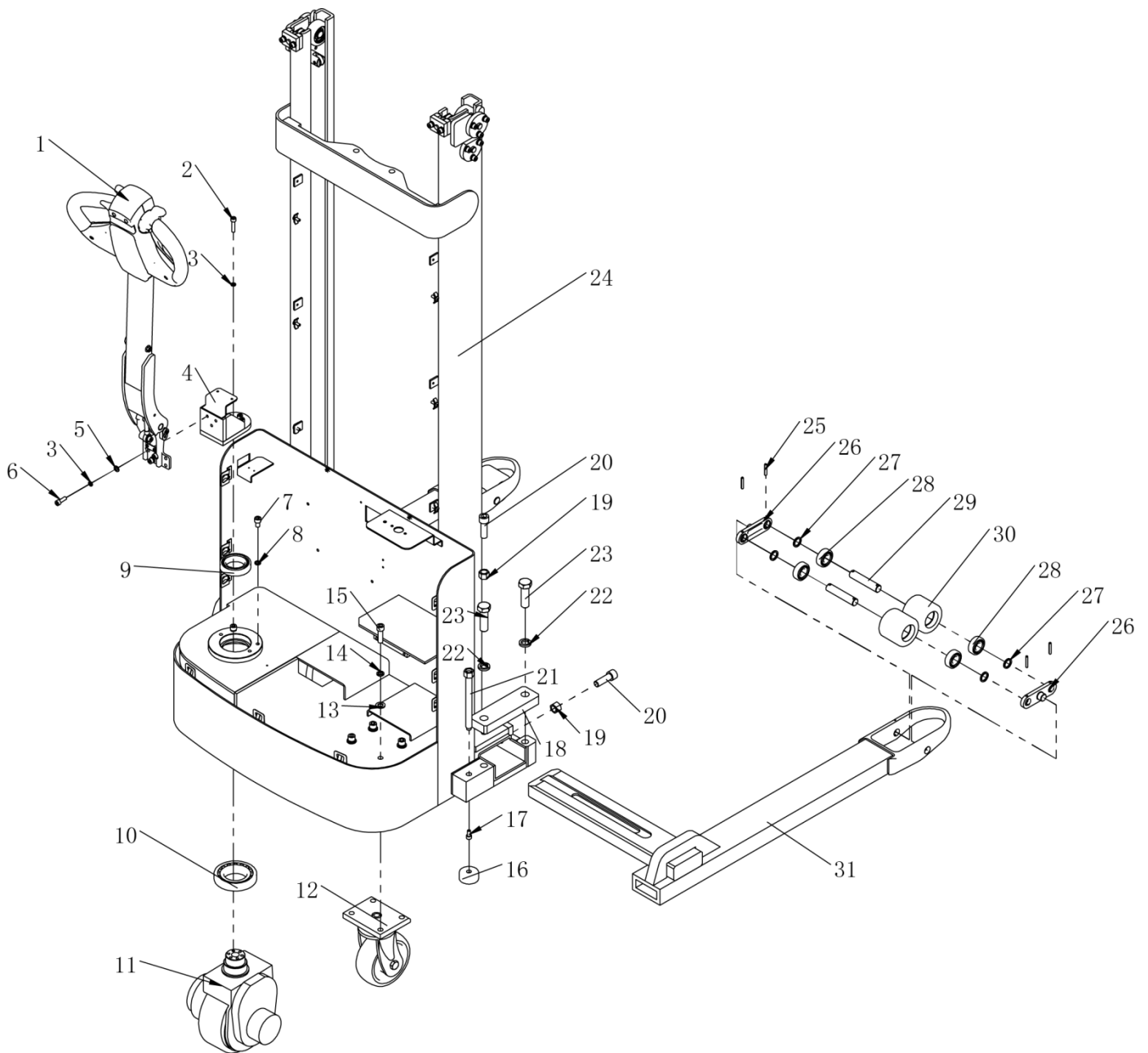


Catalogue

1. Body system	1
1.1 Frame system	1
1.2 Cover assembly.....	3
1.2 cover assembly	4
1.3 Universal wheel assembly	5
2. Drive assembly	7
2.1 Drive assembly	8
3. Operating handle assembly	9
3.1 Operating handle assembly.....	10
4. Hydraulic system	11
4.1Hydraulic system	12
5. Electric assembly	13
5.1Electric assembly.....	14
6. Lifting system	15
6.1Lifting system.....	16
6.2 Tray rack.....	17

1. Body system

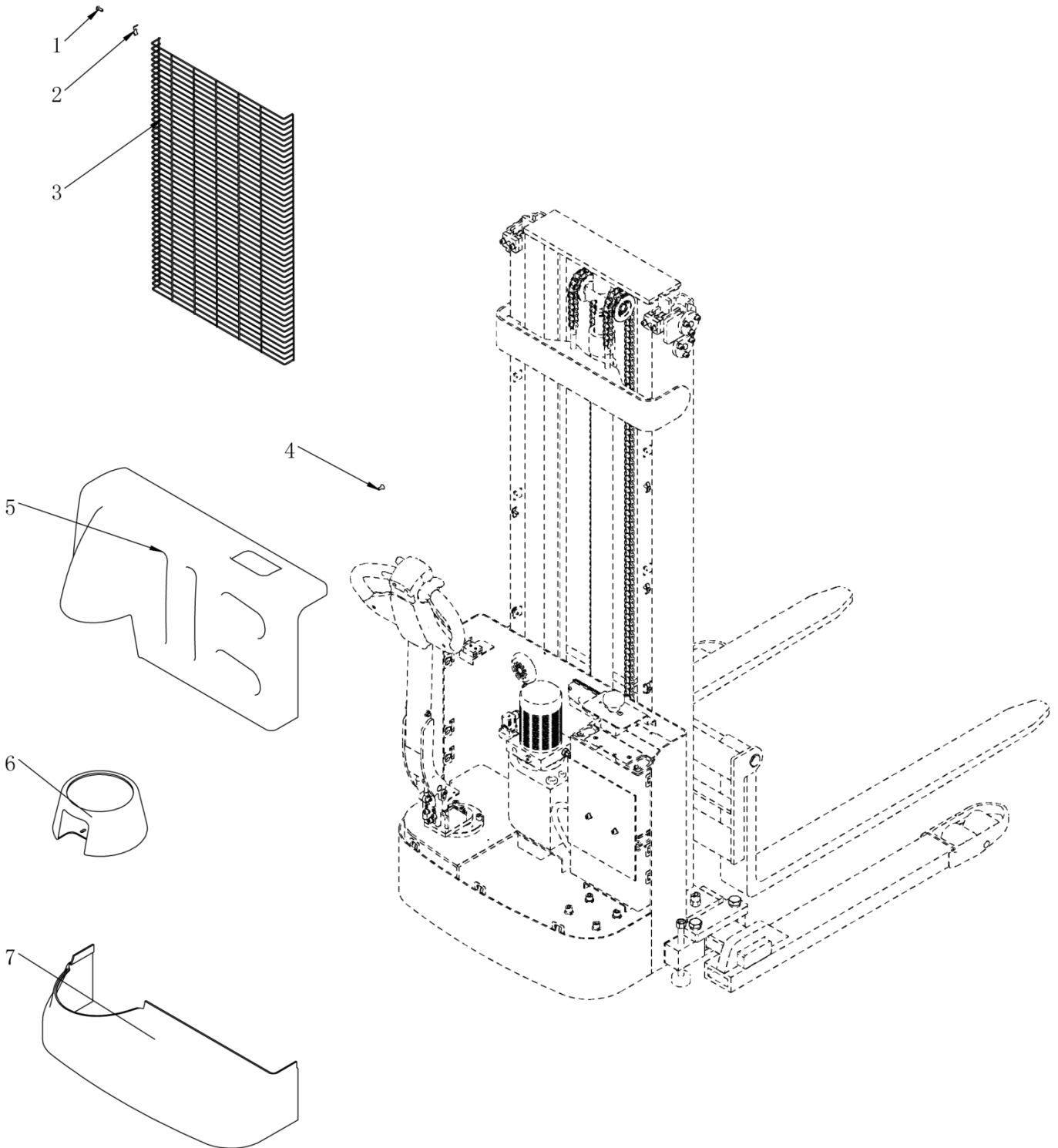
1.1 Frame system



1.1 Frame assembly

No.	Code	Name	specification	Qty.	Notes
1	CLJ1030.01.02	Operating handle assembly		1	
2	GB/T 70.1-2000	Hexagon socket head cap screws	M8×35	6	
3	GB/T 93-1987	Elastic washer	8×2.1	27	
4	CLJ1030.01.04	Handle base welded		1	
5	GB/T 95-2002	Flat washer	8×1.6	21	
6	GB/T 70.1-2000	Hexagon socket head cap screws	M8×25	19	
7	GB/T 70.1-2000	Hexagon socket head cap screws	M10×16	2	
8	GB/T 93-1987	Elastic washer	10×2.6	3	
9	GB/T 276-94	Deep groove ball bearing	6010	1	
10	GB/T 297-94	Tapered roller bearings	30212	1	
11	ZD11265	Horizontal drive		1	0.75KW24V
12	CL10.5.5k	Steering wheel		1	
13	GB/T 95-2002	Flat washer	12×2.5	4	
14	GB/T 93-1987	Elastic washer	12×3.1	4	
15	GB/T 70.1-2000	Hexagon socket head cap screws	M12×40	4	
16	CL12JY-01.4	Backing block		2	
17	GB/T 70.1-2000	Hexagon socket head cap screws	M8×16	2	
18	CL12JY-01.5	Clamp plate		2	
19	GB/T 41-2000	Hexagon nut	M16	4	
20	GB/T 70.1-2000	Hexagon socket head cap screws	M16×50	4	
21	CL12JY-01.3	Screw welding		2	
22	GB/T 93-1987	Elastic washer	20×5	4	
23	GB/T 5783-2000	Hexagon head bolt with full thread	M20×65	4	
24	CL12JY-01.01	Frame welding		1	
25	GB/T 879.1-2000	Elastic cylindrical pin	5×35	8	
26	DFL25.1-14D	Chain lever		4	
27	SL20.1-9	Washer		8	
28	GB/T 276-94	Deep groove ball bearing	6204	8	
29	CL10-4H	Front axle (2)		4	
30	CL10-5	trundle		4	
31	CL12JY-01.2	Welded leg parts		2	One piece for each side

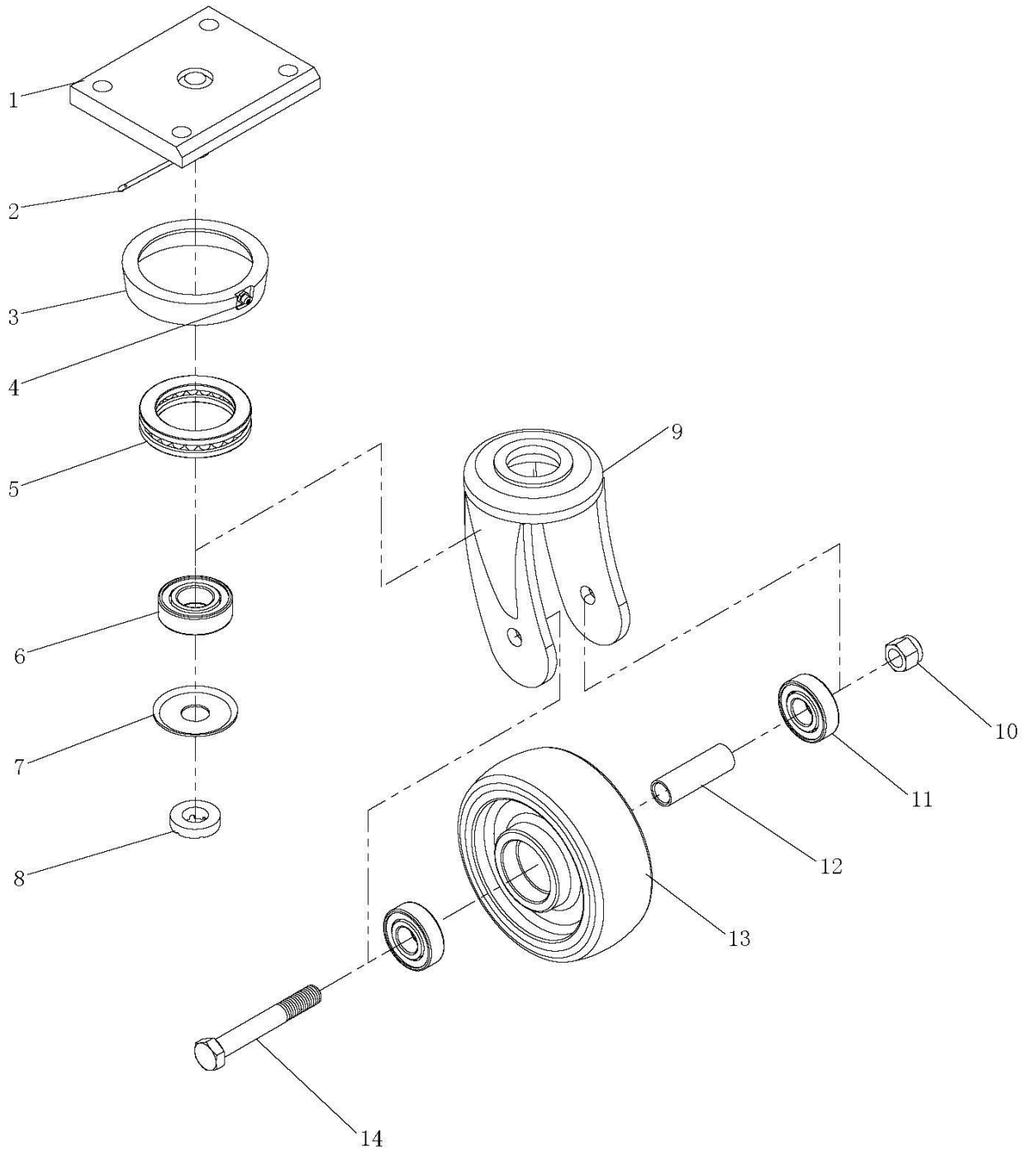
1.2 Cover assembly



1.2 cover assembly

No.	Code	Name	Specification	Qty.	Notes
1	GB/T 818-2000	Cross recessed pan head screws	M6×16	6	
2	SPN10.0-6	Shield clamp		6	
3	SPN1016.0-4	Shield		1	
4	GB/T 70.3-2000	Hex socket countersunk head screw	M6×16	2	
5	CLJ1030.06-2	Upper face shield		1	
6	CLJ1030.06-4	Handle base cover		1	
7	CLJ1030.06-3	Lower face shield		1	

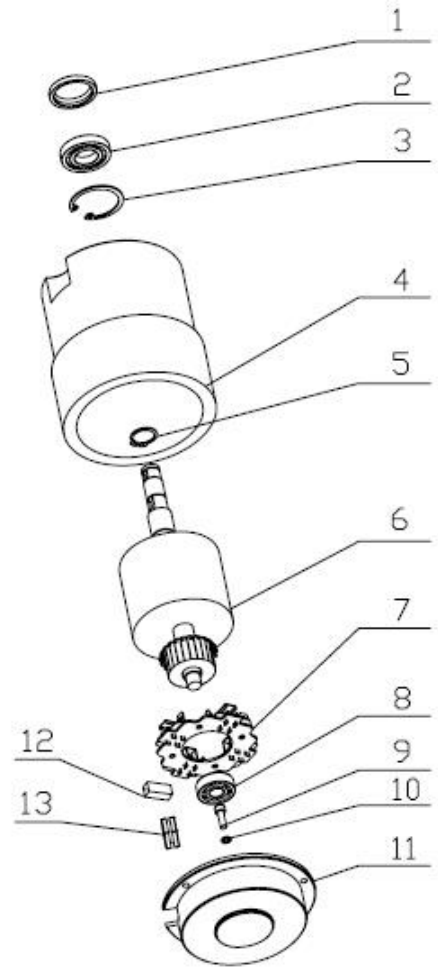
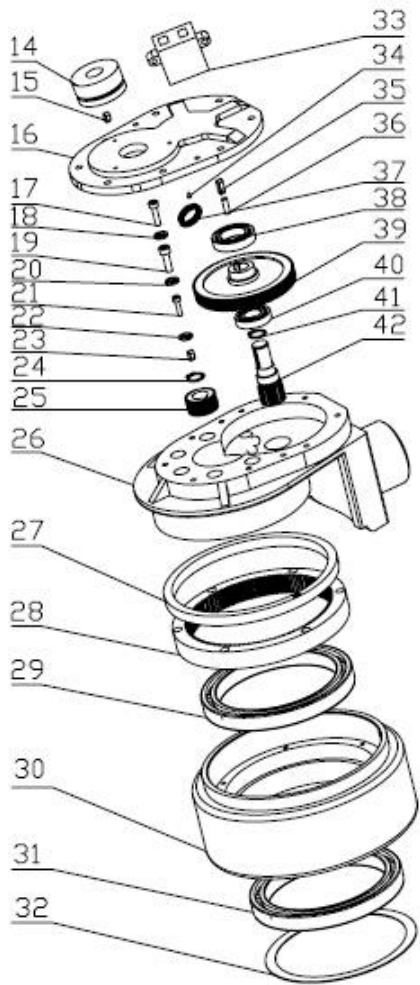
1.3 Universal wheel assembly



1.3 Universal wheel assembly

No.	Code	Name	Specification	Qty.	Notes
1	CL10.5.5.1G	Flange welded parts		2	
2	GB/T 91-2000	Cotter pin	Φ3.2×45	2	
3	CL10.5.5-2	Dust ring		2	
4	JB/T 7940.1-1995	Straight through forced filling oil cup	M6	2	
5	GB/T 301-1995	Thrust ball bearing	51111	2	
6	GB/T 276-94	Deep groove ball bearing	6205-2Z	2	
7	CL10.5.5-3	Gland		2	
8	M20×1.5	Slotted nut		2	
9	CL10.5.5-4G	Wheel carrier		2	
10	GB/T 889.1-2000	Hexagon lock nut	M14	2	
11	GB/T 276-94	Deep groove ball bearing	6204-2Z	4	
12	CL10.5.5-6	Shaft sleeve		2	
13	CL10.5.5-7	rear-wheel		2	
14	GB/T 5780-2000	Hexagonal head bolt	M14×100	2	

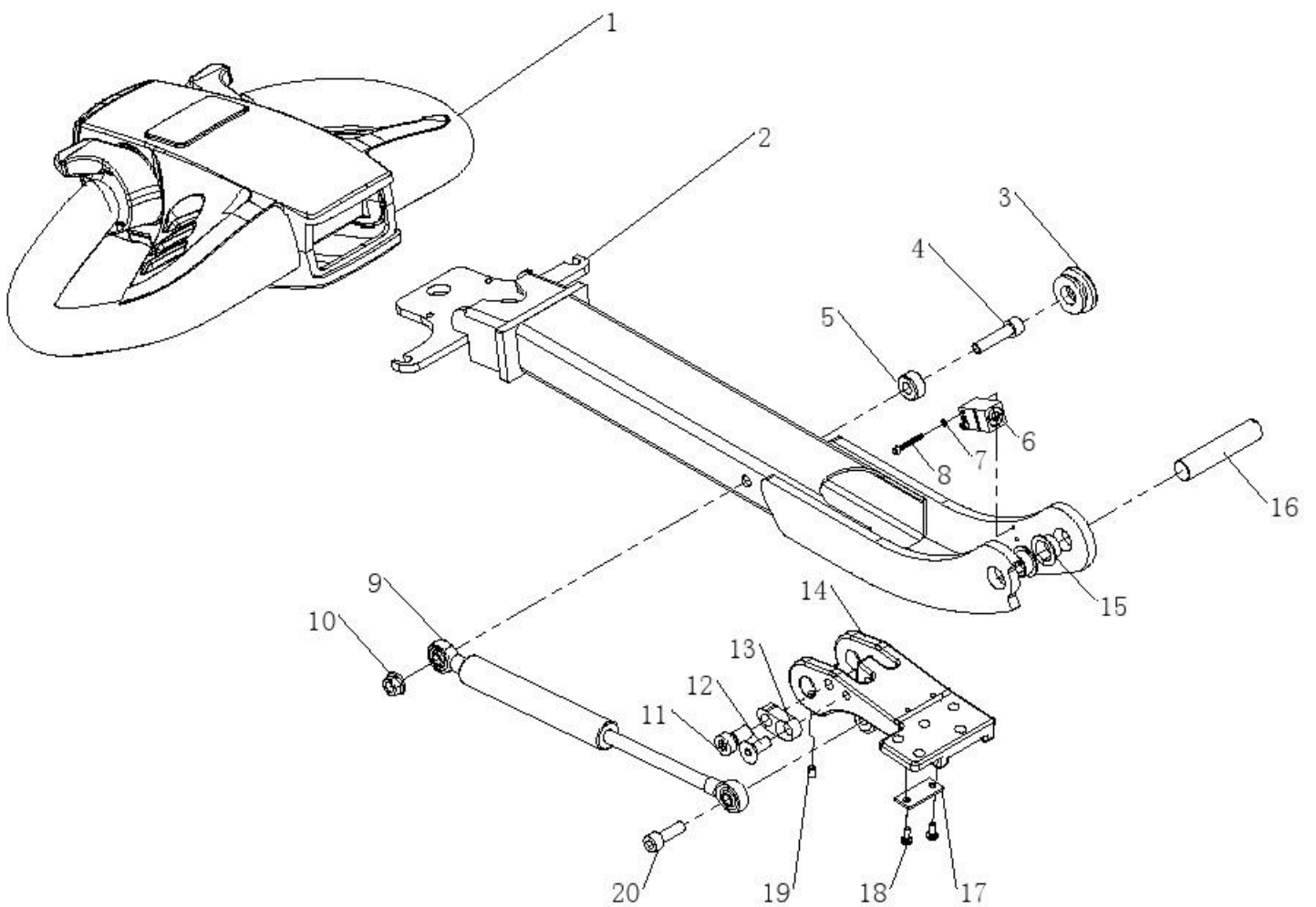
2. Drive assembly



2.1 Drive assembly

No.	Code	Name	Specification	Qty.	Notes
1	GB/T13871-92	Oil seal	TC ϕ 42 \times ϕ 20 \times 7	1	
2	GB/T276-94	Bearing	6004RS	1	
3	GB893.1-86	Hole retaining ring	ϕ 42	1	
4	ZD-HZDC-310-002	Housing component		1	
5	GB894.1-1986	Shaft retaining ring	ϕ 15	1	
6	ZD-HZDC-320-002	Rotor		1	
7	ZD-HCDC-340-001	Brush holder component		1	
8	GB/T276-94	Bearing	6201RS	1	
9	GB/T70.1-2000	Hexagon socket screw	M5 \times 16	3	
10	GB/T93-1987	Elastic washer	ϕ 5	3	
11	ZD-HCDC-361-001	Rear end cover		1	
12	ZD-HCDC-330-001	Electric brush		4	
13	ZD-HCDC-380-001	Grommet		1	
14	ZD-HZDC-362-001	Brake		1	
15	GB/T1096-2003	Button	5 \times 5 \times 8	1	
16	1115-200001-0B	Case cover		1	
17	GB/T70.1-2000	Hexagon socket screw	M6 \times 20	8	
18	GB/T93-1987	Elastic washer	ϕ 6	8	
19	GB/T70.1-2000	Hexagon socket screw	M8 \times 35	5	
20	GB/T93-1987	Elastic washer	ϕ 8	5	
21	GB/T70.1-2000	Hexagon socket screw	M5 \times 20	6	
22	GB/T93-1987	Elastic washer	ϕ 5	6	
23	GB/T1096-2003	Button	5 \times 5 \times 14	1	
24	GB894.1-1986	Elastic washer	ϕ 16	1	
25	1115-200005-0B	Plagiodont		1	
26	1121-210001-00	Case cover		1	
27	GB/T13871-92	Oil seal	TC ϕ 155 \times ϕ 172 \times 10	1	
28	1115-200002-0B	Straight gear ring		1	
29	GB/T276-94	Bearing	61824-2RS	1	
30	1115-220000-0B	Driving wheel		1	
31	GB/T276-94	Bearing	61824-2RS	1	
32	6118003	Dust ring		1	
33	JX6-2	Junction box		1	
34	JB/T7940.1-1995	Forced filling oil cup		1	
35	GB/T1096-2003	Button	5 \times 5 \times 20	1	
36	GB/T119.1-2000	Locating pin	ϕ 5 \times 15	2	
37	GB/T13871-92	Oil seal	TC ϕ 16 \times ϕ 28 \times 7	1	
38	GB/T276-94	Bearing	61905-2Z	1	
39	1115-200004-0B	Macrohelical tooth		1	
40	GB/T276-94	Bearing	16003-2Z	1	
41	GB894.1-1986	Shaft retaining ring	ϕ 15	1	
42	1115-200003-0B	Spur gear		1	

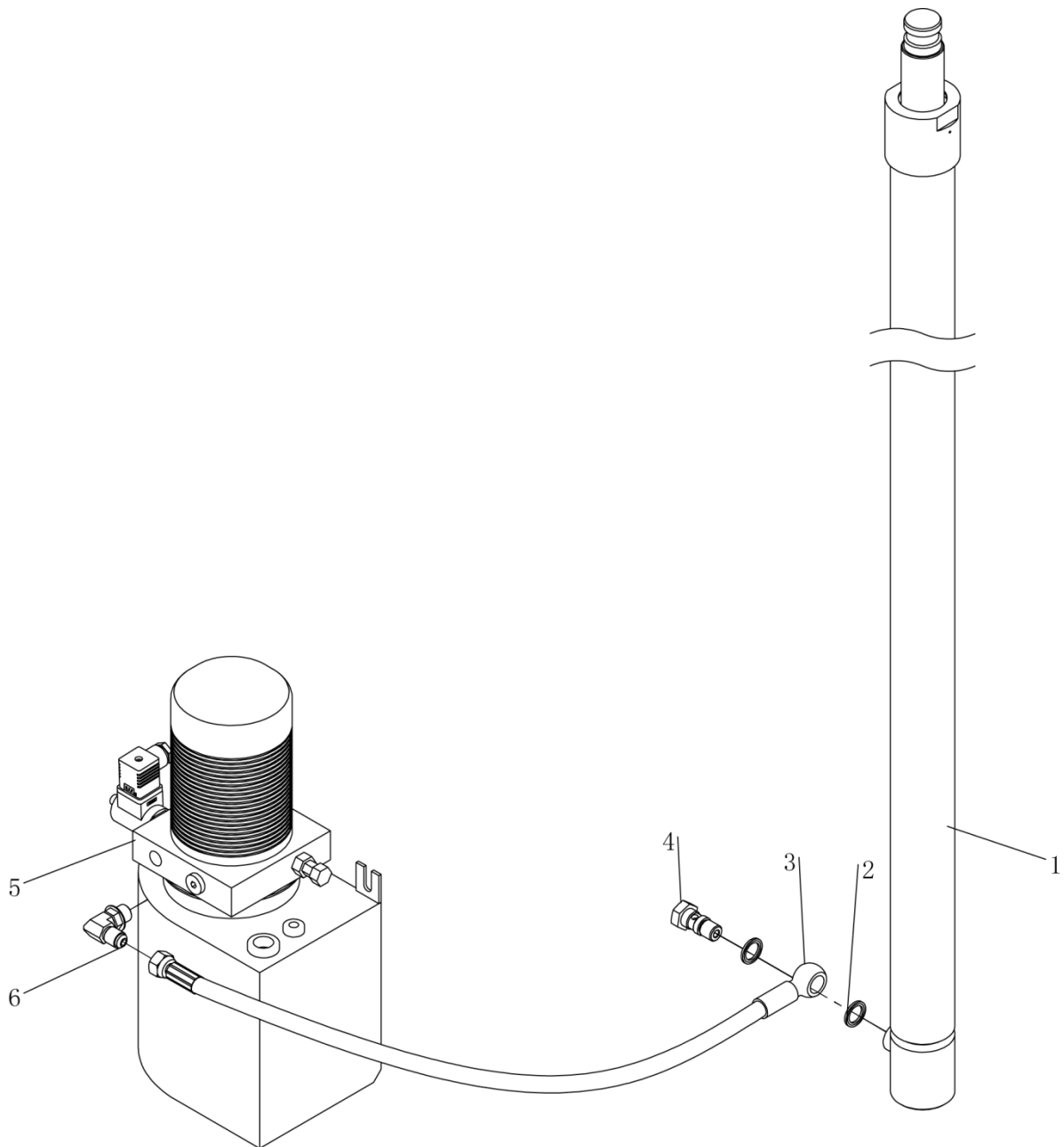
3. Operating handle assembly



3.1 Operating handle assembly

No.	Code	Name	Specificati on	Qty.	Notes
1	TY-01.20	Detong handle T606-5		1	
2	CLJ1030.01.02.01	Welded handle rod		1	
3	CS1232.8-1	Shock pad		1	
4	GB/T 70.1-2000	Hexagon socket head cap screws	M8×35	1	
5	SL13.03-09	Spacer sleeve		1	
6	CJF17-05PA	Proximity switch		1	
7	GB/T 93-1987	Elastic washer	Φ3	2	
8	GB/T 70.1-2000	Hexagon socket head cap screws	M3×25	2	
9	CLJ1030.01.02.02	Gas spring assembly		1	
10	GB/T 6177.1-2000	Hexagon flange nut	M8	1	
11	GB/T 70.1-2000	Hexagon socket head cap screws	M10×20	1	
12	GB/T 70.3-2000	Hex socket countersunk head screw	M8×20	1	
13	SL13.03-03	Stop block		1	
14	SL13.03-02	Joint seat		1	
15	TY-02.22	Composite set with shoulderΦ18×Φ16×10		2	
16	SL13.03-07	Joint axis		1	
17	SL13.03-04	Cable ramp		1	
18	GB/T 818-2000	Cross recessed pan head screws	M4×10	2	
19	GB/T 77-2000	Flat point set screw	M6×8	1	
20	GB/T 70.1-2000	Hexagon socket head cap screws	M8×25	1	

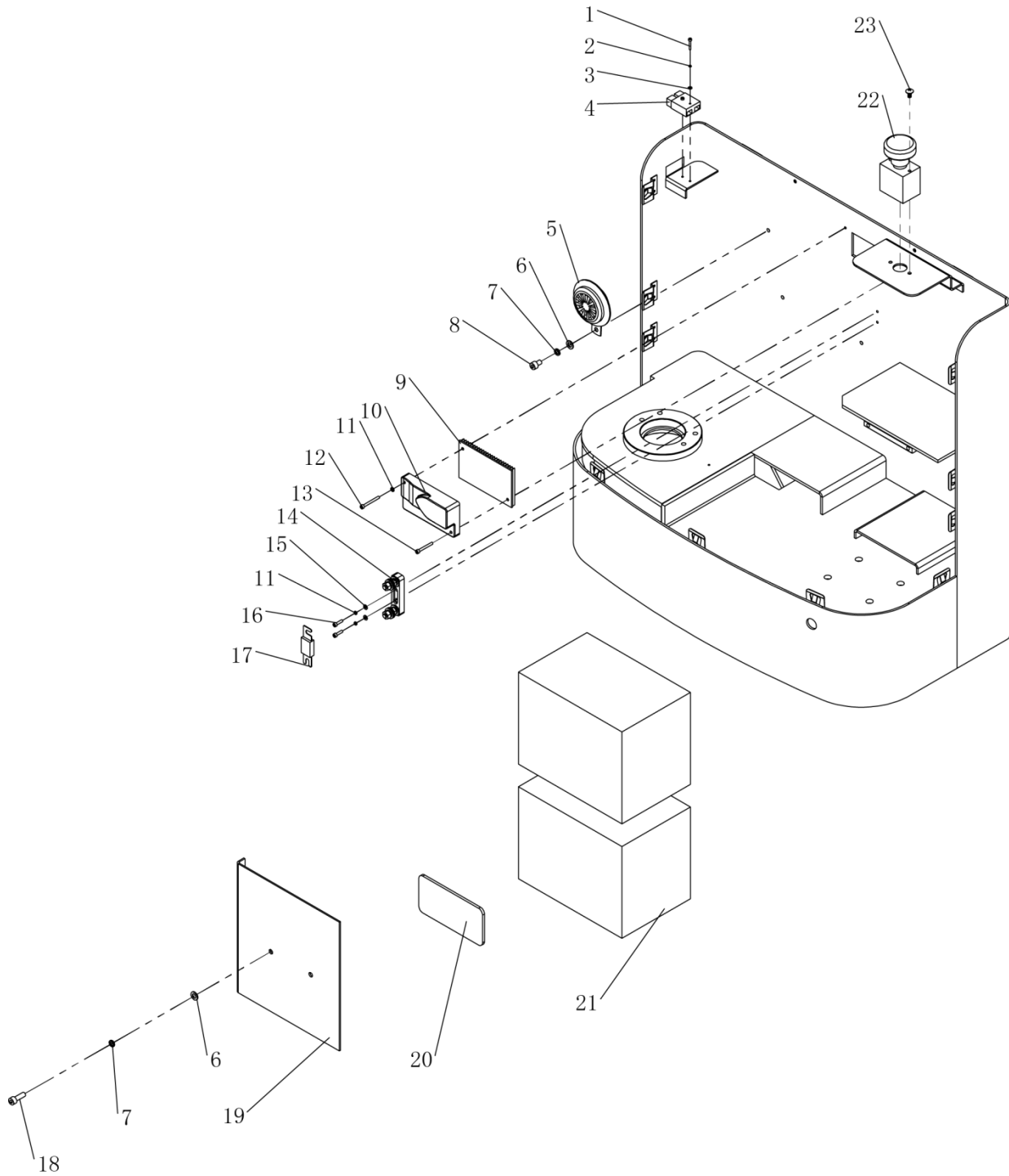
4. Hydraulic system



4.1 Hydraulic system

Np.	Code	Name	Specification	Qty.	Notes
1	CLJ1030.05	Cylinder subassembly		1	
2	GB982-77	Combination gasket	Φ18	2	
3	CLJ1030.04-1	Rubber hose		1	
4	SPN10.8-6	Oil pipe joint		1	
5	CLJ1030.01.03.03	Power unit	24V/2.2KW	1	
6	CL10.4-3H	90°joint		1	

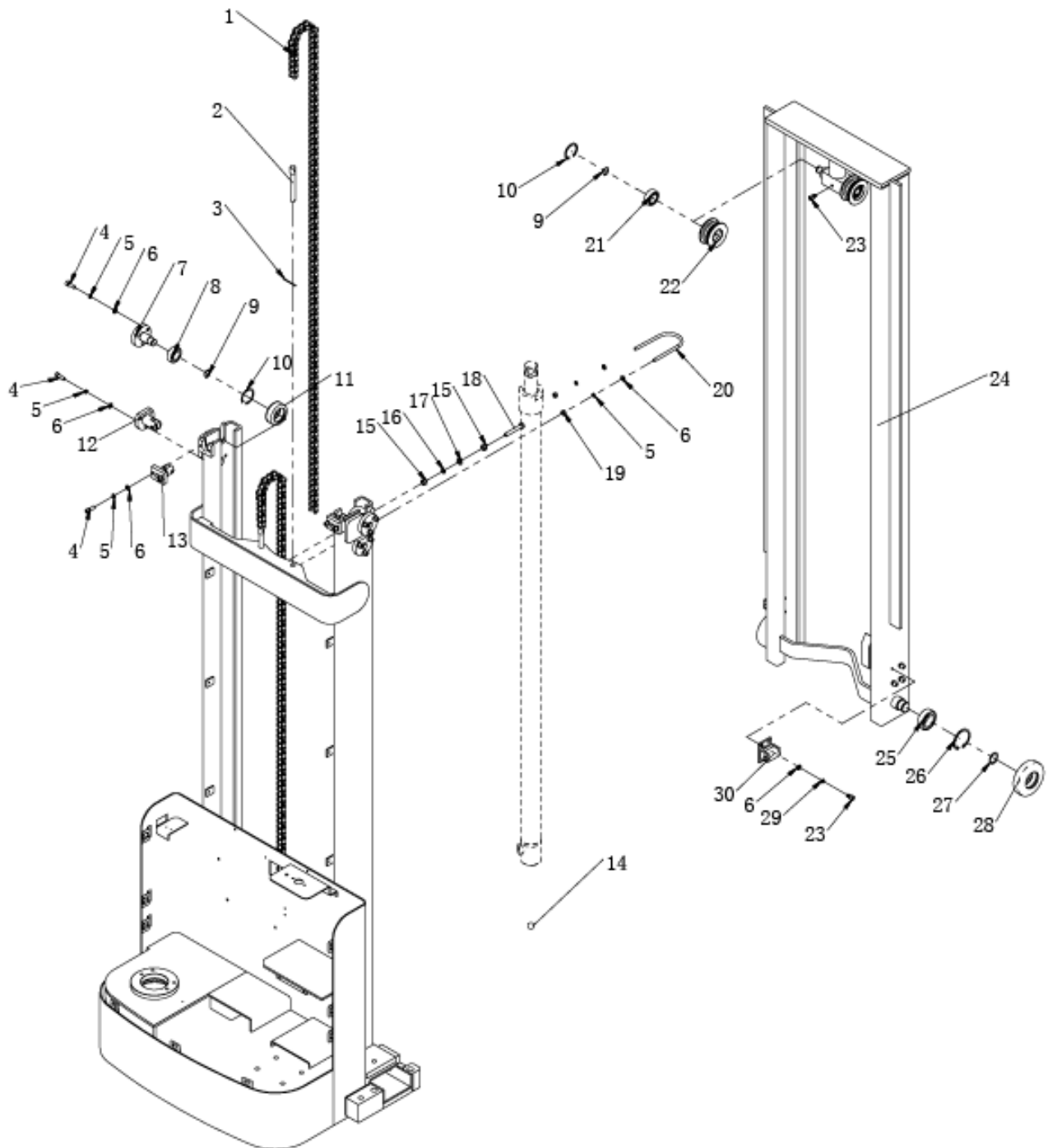
5. Electric assembly



5.1 Electric assembly

No.	Code	Name	Specification	Qty.	Notes
1	GB/T 70.1-2000	Hexagon socket head cap screws	M3×20	2	
2	GB/T 93-1987	Elastic washer	Φ3	2	
3	GB/T 95-2002	Flat washer	Φ3	2	
4	TY-01.2	Charging socket TSB50A / 600A		1	
5	TY-01.18	Horn DC24-Φ125		1	
6	GB/T 95-2002	Flat washer	Φ8	3	
7	GB/T 93-1987	Elastic washer	Φ8	3	
8	GB/T 70.1-2000	Hexagon socket head cap screws	M8×12	1	
9	DK1220.01-2	Electric control mounting board		1	
10	1212P-2502	Electric control		1	
11	GB/T 93-1987	Elastic washer	Φ5	4	
12	GB/T 70.1-2000	Hexagon socket head cap screws	M5×35	1	
13	GB/T 70.1-2000	Hexagon socket head cap screws	M5×30	1	
14	TY-02.32	Fuse holder		1	
15	GB/T 95-2002	Flat washer	Φ5	2	
16	GB/T 70.1-2000	Hexagon socket head cap screws	M5×16	2	
17	TY-01.4	Fuse	CNP-100A	1	
18	GB/T 70.1-2000	Hexagon socket head cap screws	M8×25	2	
19	CLJ1030.01.03-1	Battery limit plate		1	
20	CLJ1030.01.03-2	Rubber pad		2	
21	6-EVF-100	Battery	100AH-12V	2	
22	TY-01.14	Emergency stop switch ZDK31-250		1	
23	GB 973-1976	Large flat cross screw	M6×12	2	

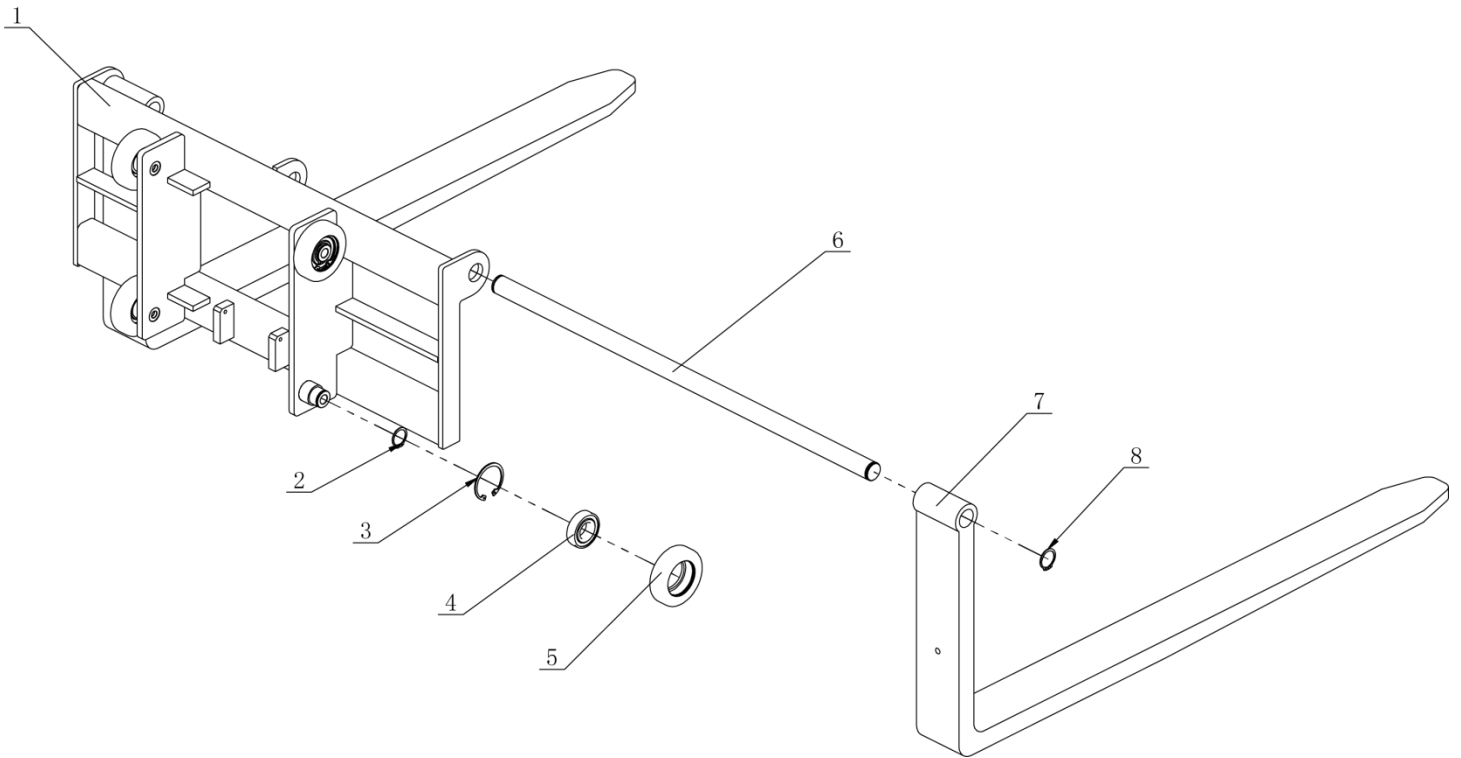
6. Lifting system



6.1 Lifting system

No.	Code	Name	Specification	Qty.	Notes
1	SPN10.0-5	Chain	ISO12A	2	
2	SPN10.0-1	Chain rod		2	
3	GB/T 91-2000	Cotter pin	2.5×40	2	
4	GB/T 70.1-2000	Hexagon socket head cap screws	M8×25	16	
5	GB/T 93-1987	Elastic washer	8×2.1	18	
6	GB/T 95-2002	Flat washer	8×1.6	26	
7	CL10.7.1	Guide wheel shaft base		2	
8	GB/T 276-94	Deep groove ball bearing	6204-2Z	2	
9	GB 894.2-86	Elastic retainer for shaft	20	2	
10	GB 893.1-86	Elastic retainer for hole	47	2	
11	CL10.7-3	Guide wheel		2	
12	CL10.9	Left and right limit wheel frame		2	
13	CL10.8	Rear wheel stop frame		2	
14	GB / T308-77	Steel ball	Φ19.05	1	
15	GB/T 41-2000	Hexagon nut	M10	2	
16	GB/T 93-1987	Elastic washer	10×2.6	1	
17	GB/T 95-2002	Flat washer	10×2	1	
18	GB/T 5781-2000	Hexagon nut with full thread	M10×65	1	
19	GB/T 41-2000	Hexagon nut	M8	2	
20	SPN10.0-2	Cylinder collar		1	
21	GB/T 276-94	Deep groove ball bearing	6204	2	
22	SPN10.2-5	Sprocket wheel		2	
23	GB/T 70.1-2000	Hexagon socket head cap screws	M8×16	9	
24	CL12JY-02.1	Inner door frame welding		1	
25	GB/T 276-94	Deep groove ball bearing	6206-2Z	2	
26	GB 893.2-86	Elastic retainer for hole	62	2	
27	GB 894.2-86	Elastic retainer for shaft	30	2	
28	SPN10.2-1	Inner frame roller		2	
29	GB/T 93-1987	Elastic washer	8×2.1	8	
30	CL10.2.1	Guide wheel assembly		2	

6.2 Tray rack



6.2Tray rack					
No.	Code	Name	Specification	Qty.	Notes
1	CL12JY-03.1	Welded pallet frame		1	
2	GB 894.2-86	Elastic retainer for shaft	30	4	
3	GB 893.2-86	Elastic retainer for hole	62	4	
4	GB/T 276-94	Deep groove ball bearing	6206-2Z	4	
5	CL10.2-7	Tray roller		4	
6	CL12JY-03.2	Long axis		4	
7	CL12JY-03.3	Forging fork(backrest raised)		2	
8	GB894. 1-86	Elastic retainer for shaft	32	2	

The manufacturer reserves the right to interpret this parts list.