



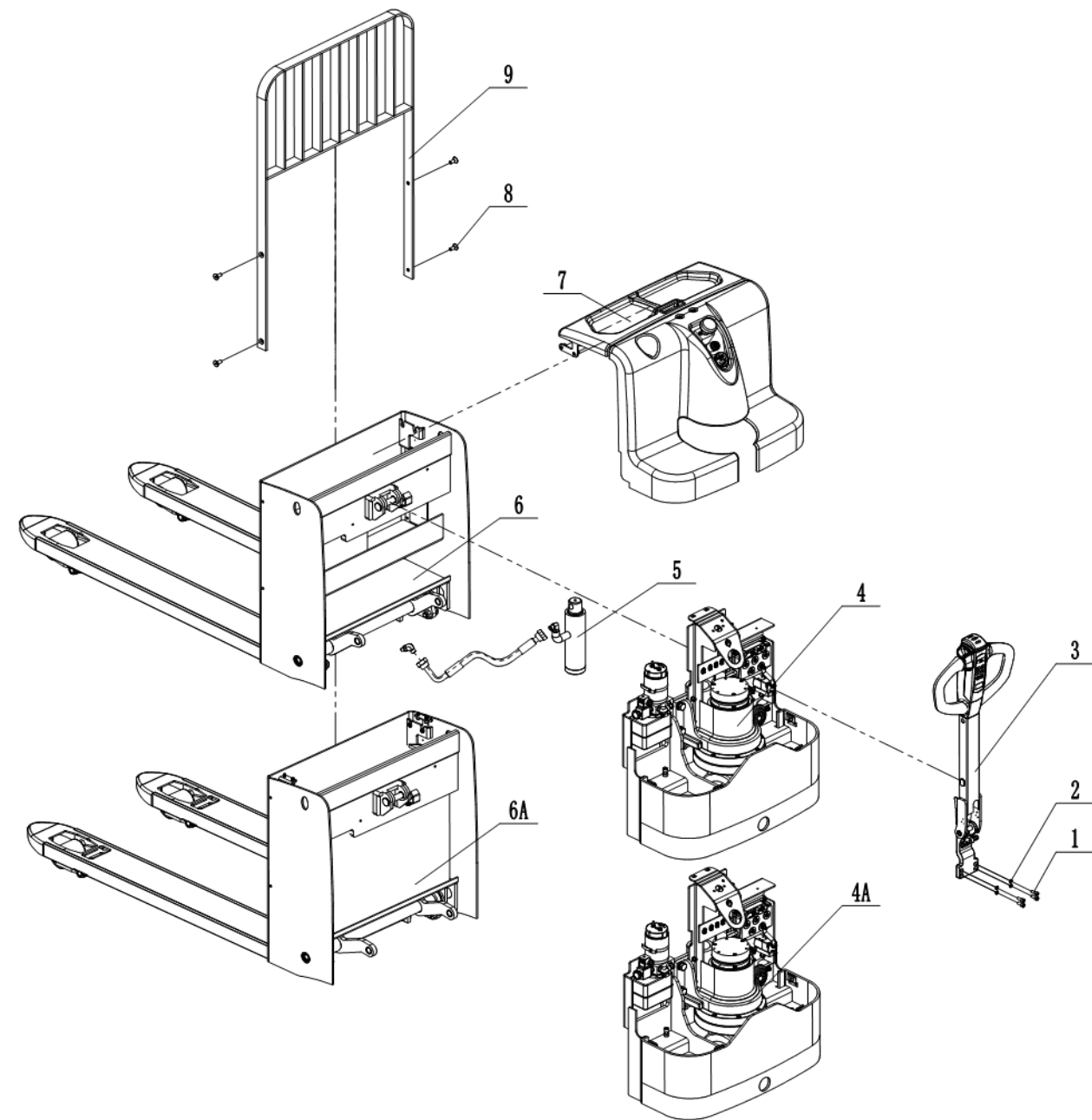
EP20E/EP20E-LI/EP25E/EP25E-LI

ELECTRIC LONG-HANDLED
FORKLIFT TRUCK

PART MANUAL

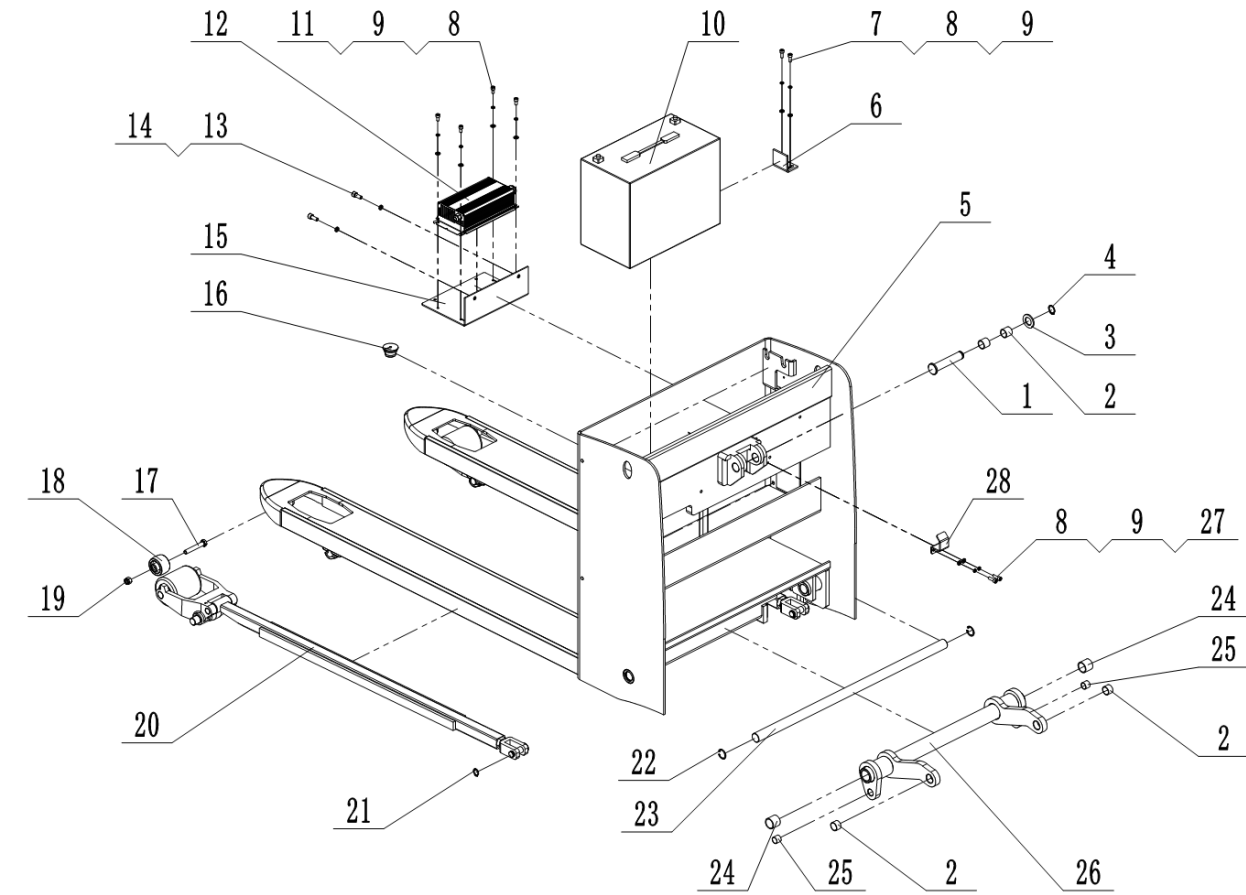


全电动搬运车



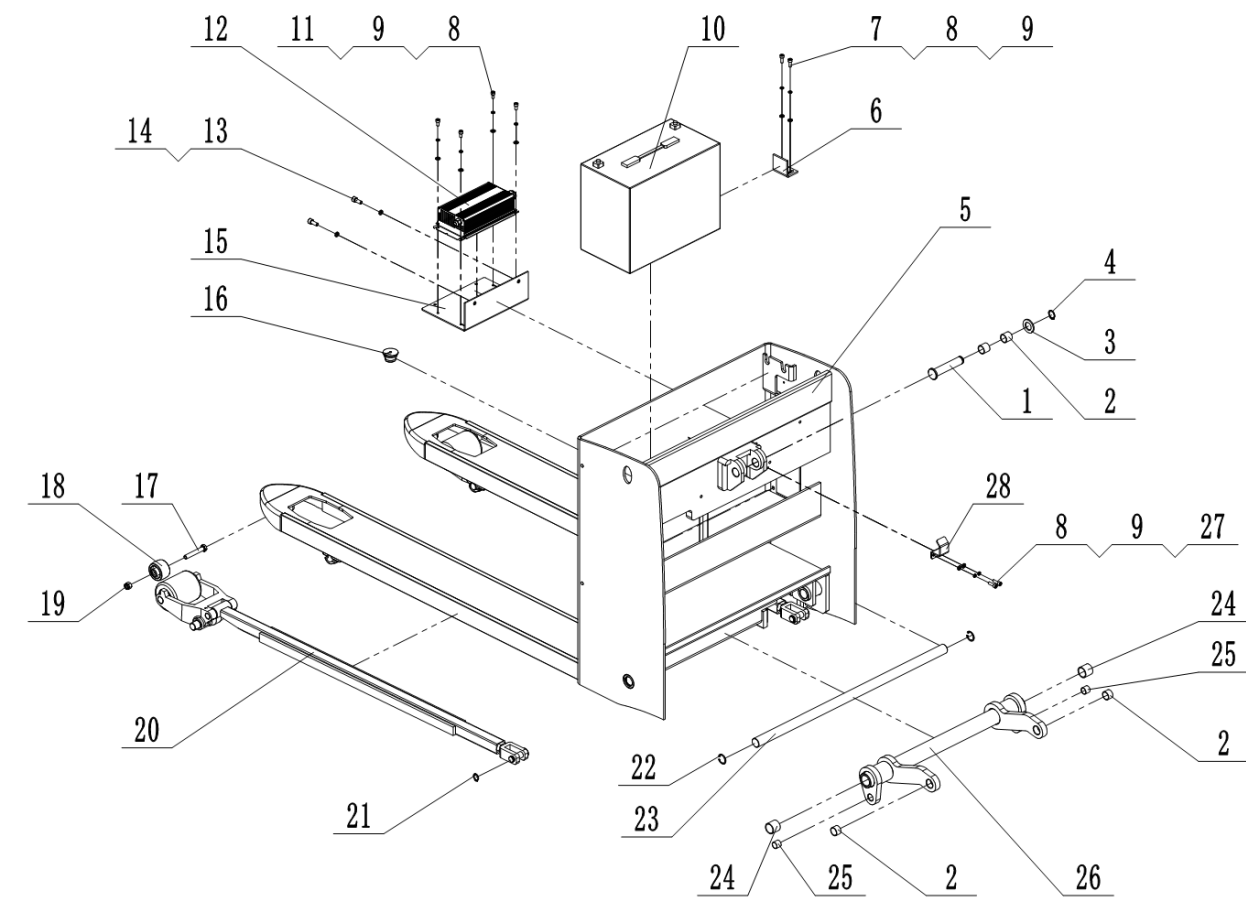
序号 Index	代码 Part No.	零件名称	Part Name	数量 Qty	适用日期 Applied Date	备注 Remark
1	50201080003	内六角圆柱头螺钉 M8×20	Hexagon socket cap screw	4		
2	50511080001	弹性垫圈φ8	Resilient washer	4		
3	20105160006	操作系统组件	Control System Assembly	1		
4	20105110021	车架组件	Frame assembly	1		内置式
4A	20105110043	车架组件	Frame assembly	1		外置式
5	20105110022	油缸组件	Hydraulic Cylinder Assembly	1		
6	20105110023	叉架组件	Fork Bracket Assembly	1		85mm
	20105110024	叉架组件B	Fork Frame B Assembly	1		85mm
6A	20105110044	叉架组件	Fork Bracket Assembly	1		80mm
	20105110045	叉架组件B	Fork Frame B Assembly	1		80mm
7	20105110031	覆盖件总成	Cover Assembly	1		
8	50203100009	内六角沉头螺钉 M10×25	Hexagon socket countersunk head screw	4		
9	20105060025	护栏焊合	Guardrail Welding Assembly	1		

1.1 叉架组件(内置式、85mm)



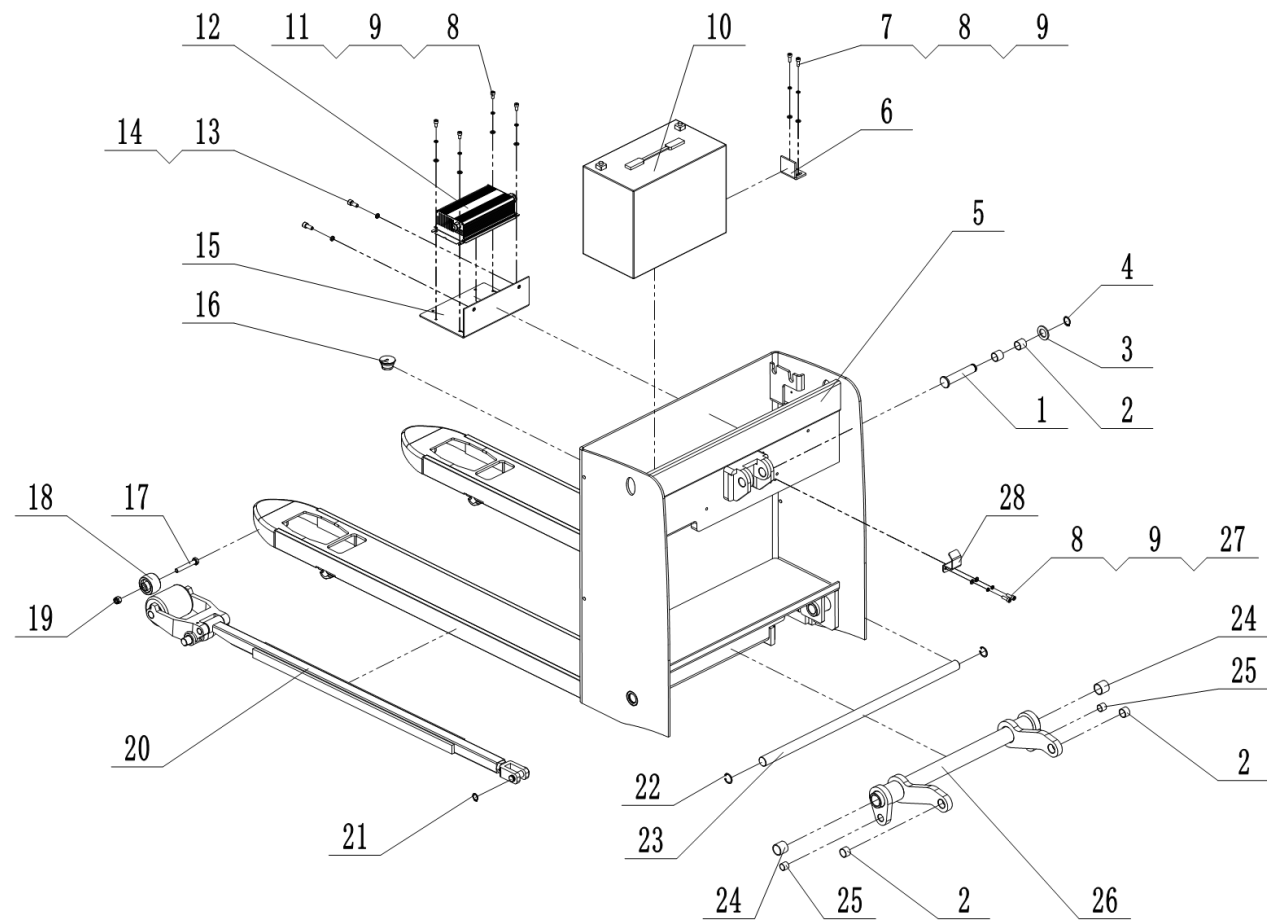
序号 Index	代码 Part No.	零件名称	Part Name	数量 Qty	适用日期 Applied Date	备注 Remark
1	70101200036	油缸固定轴	Cylinder Fixing Shaft	1		
2	72901200005	复合衬套φ23*φ20*15	Composite Bushing	4		
3	50501200013	圆形垫圈φ20	Round washer	1		
4	50521201001	轴用弹性挡圈φ20	Shaft retaining ring	1		
5	20105060026	叉架焊合	Fork Bracket Welding Assembly	1		85mm
6	77706050012	电瓶限位板	Battery lock bracket	1		
7	50201060005	内六角圆柱头螺钉 M6*16	Hexagon socket cap screw	2		
8	50511060001	弹性垫圈φ6	Resilient washer	8		
9	50501060001	圆形垫圈φ6	Round washer	8		
10	81103242002	锂电池24V100Ah	Lithium Battery	1		
11	50201060002	内六角圆柱头螺钉 M6×12	Hexagon socket cap screw	4		
12	80912241043	充电器GBCH24V30A-B	Charger	1		带美标弹簧线
13	50201080003	内六角圆柱头螺钉 M8×20	Hexagon socket cap screw	2		
14	50511080001	弹性垫圈φ8	Resilient washer	2		

1.1 叉架组件(内置式、85mm)



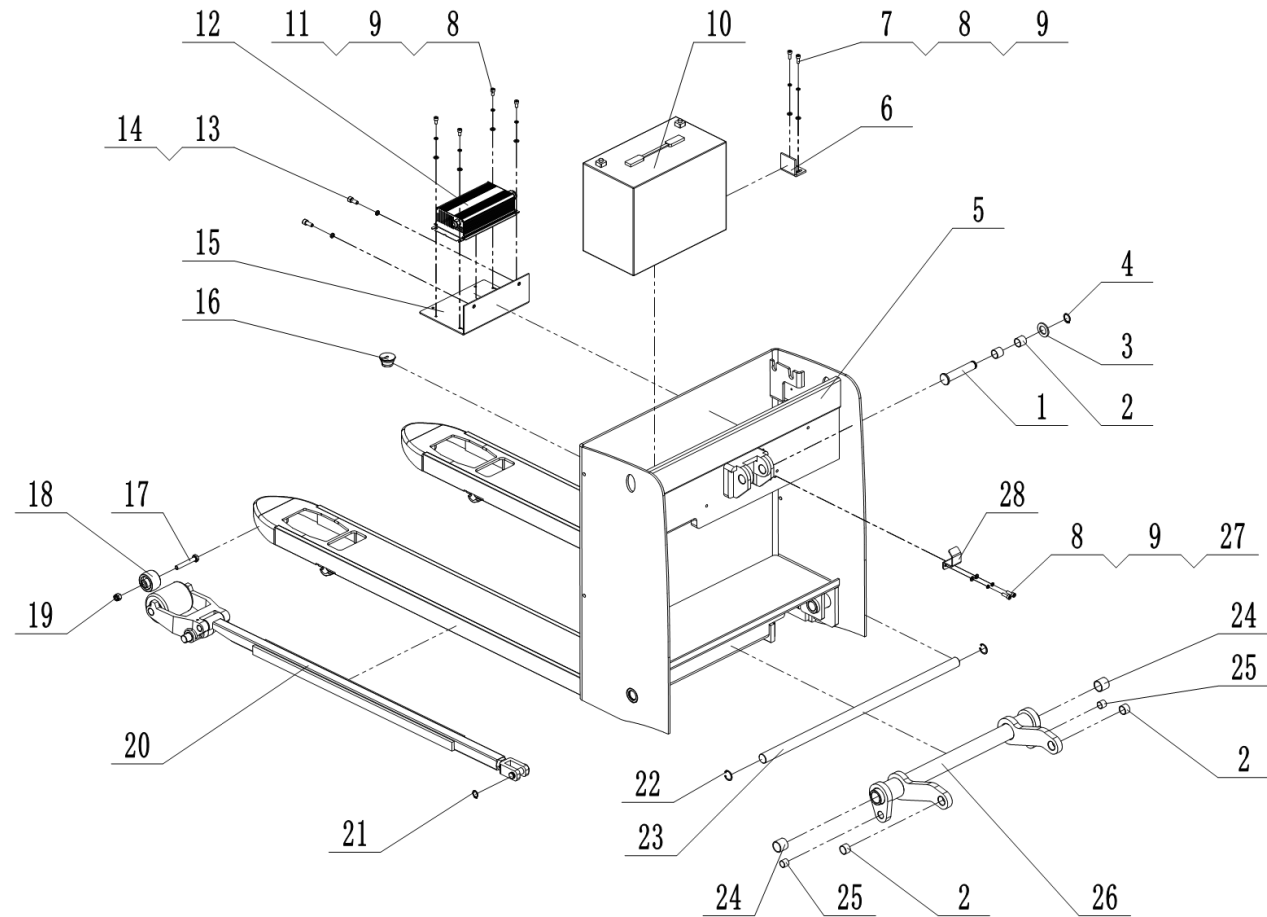
序号 Index	代码 Part No.	零件名称	Part Name	数量 Qty	适用日期 Applied Date	备注 Remark
15	77705050071	充电器安装板	Charger Mounting Plate	1		
16	73631070001	橡胶线塞	Rubber cable grommet	1		
17	50101100016	六角头螺栓M10×65	Hexagon bolt	2		
18	71503010001	进入滚子	Entry roller	2		
19	50311100001	六角锁紧螺母M10	Hex lock nut	2		
20	75901110007	推杆组件	Push Rod Assembly	2		85mm
21	50521161001	轴用弹性挡圈φ16	Shaft retaining ring	2		
22	50521252001	弹性挡圈φ25	Retaining Ring	2		
23	75101210011	圆环棒轴φ24.5*688	Ring Bar Shaft	1		
24	72901250001	复合衬套φ29*φ25*25	Composite bush	2		
25	72901160001	复合衬套φ18*φ16*15	Composite bush	2		
26	75101010011	圆环棒焊合	Welded Ring Bar Assembly	1		85mm
27	50201060007	内六角圆柱头螺钉 M6*20	Hexagon socket cap screw	2		
28	77705050072	起升限位板	Lifting Limit Plate	1		

1.1 叉架组件(内置式、80mm)



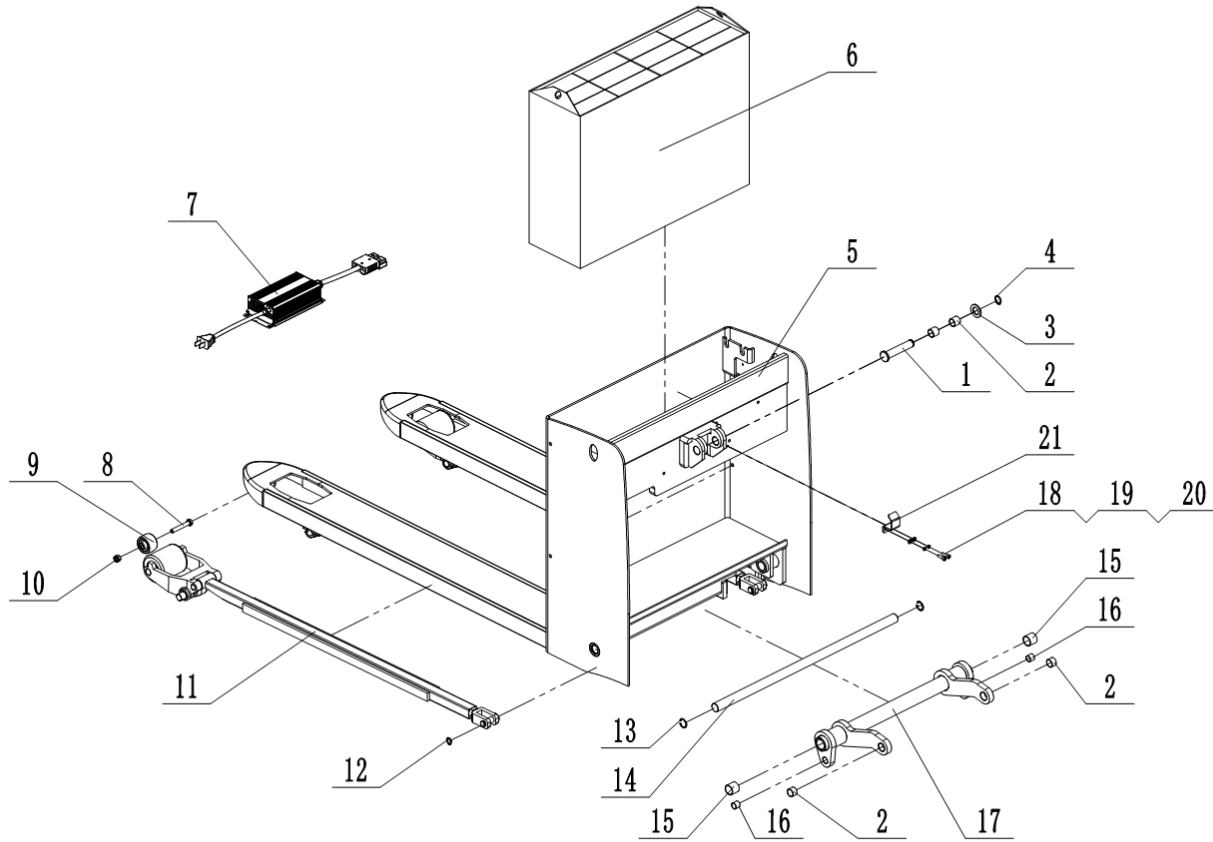
序号 Index	代码 Part No.	零件名称	Part Name	数量 Qty	适用日期 Applied Date	备注 Remark
1	70101200036	油缸固定轴	Cylinder Fixing Shaft	1		
2	72901200005	复合衬套φ23*φ20*15	Composite Bushing	4		
3	50501200013	圆形垫圈φ20	Round washer	1		
4	50521201001	轴用弹性挡圈φ20	Shaft retaining ring	1		
5	20105060036	叉架焊合	Fork Bracket Welding Assembly	1		80mm
6	77706050012	电瓶限位板	Battery lock bracket	1		
7	50201060005	内六角圆柱头螺钉 M6*16	Hexagon socket cap screw	2		
8	50511060001	弹性垫圈φ6	Resilient washer	8		
9	50501060001	圆形垫圈φ6	Round washer	8		
10	81103242002	锂电池24V100Ah	Lithium Battery	1		
11	50201060002	内六角圆柱头螺钉 M6×12	Hexagon socket cap screw	4		
12	80912241043	充电器GBCH24V30A-B	Charger	1		带美标弹簧线
13	50201080003	内六角圆柱头螺钉 M8×20	Hexagon socket cap screw	2		
14	50511080001	弹性垫圈φ8	Resilient washer	2		

1.1 叉架组件(内置式、80mm)



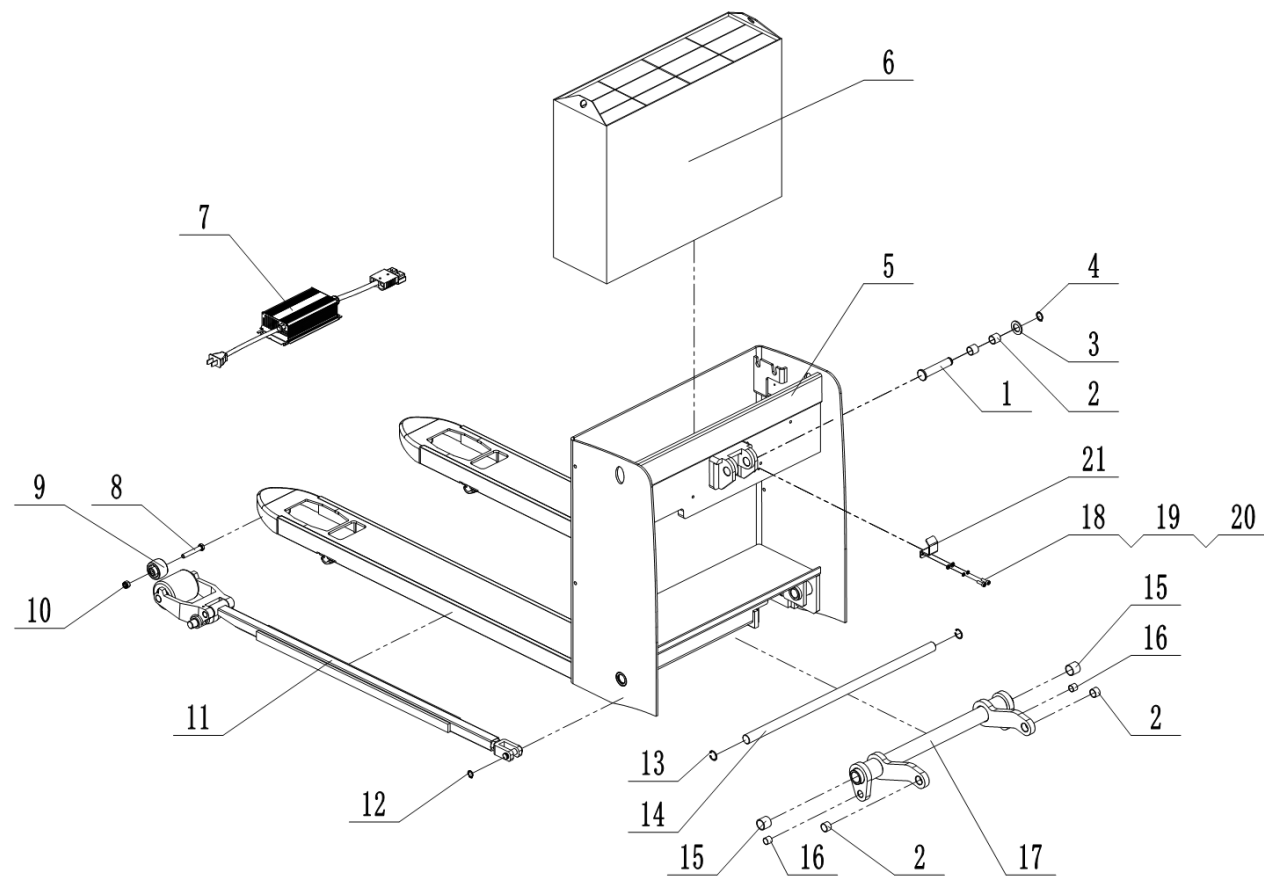
序号 Index	代码 Part No.	零件名称	Part Name	数量 Qty	适用日期 Applied Date	备注 Remark
15	77705050071	充电器安装板	Charger Mounting Plate	1		
16	73631070001	橡胶线塞	Rubber cable grommet	1		
17	50101100016	六角头螺栓M10×65	Hexagon bolt	2		
18	71503010001	进入滚子	Entry roller	2		
19	50311100001	六角锁紧螺母M10	Hex lock nut	2		
20	75901110011	推杆组件	Push Rod Assembly	2		80mm
21	50521161001	轴用弹性挡圈φ16	Shaft retaining ring	2		
22	50521252001	弹性挡圈φ25	Retaining Ring	2		
23	75101210011	圆环棒轴φ24.5*688	Ring Bar Shaft	1		
24	72901250001	复合衬套φ29*φ25*25	Composite bush	2		
25	72901160001	复合衬套φ18*φ16*15	Composite bush	2		
26	75101010013	圆环棒焊合	Welded Ring Bar Assembly	1		80mm
27	50201060007	内六角圆柱头螺钉 M6*20	Hexagon socket cap screw	2		
28	77705050072	起升限位板	Lifting Limit Plate	1		

1.2 叉架组件(外置式、85mm)



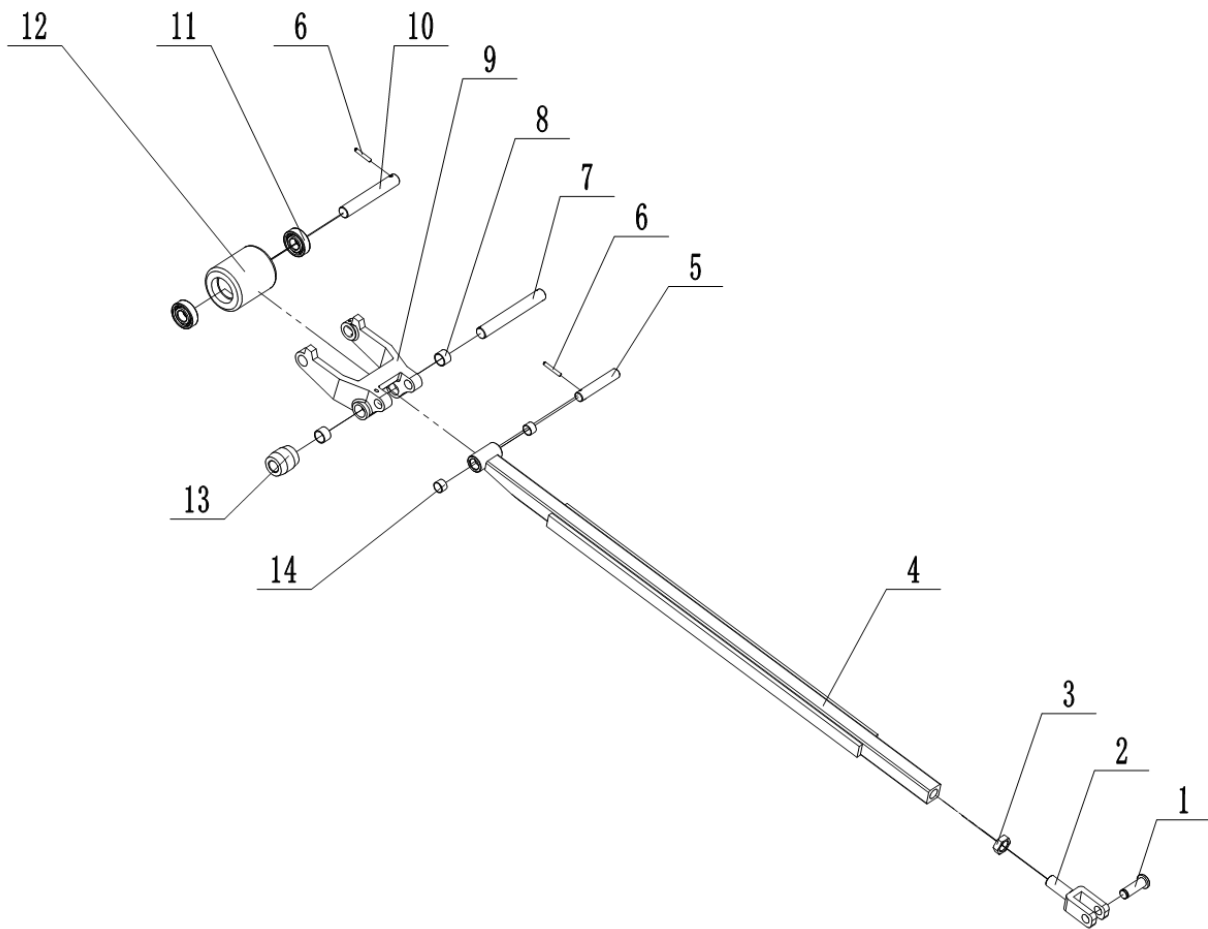
序号 Index	代码 Part No.	零件名称	Part Name	数量 Qty	适用日期 Applied Date	备注 Remark
1	70101200036	油缸固定轴	Cylinder Fixing Shaft	1		
2	72901200002	复合衬套φ23*φ20*20	Composite Bushing	4		
3	50501200013	圆形垫圈φ20	Round washer	1		
4	50521201001	轴用弹性挡圈φ20	Shaft retaining ring	1		
5	20105060031	叉架焊合B	Fork Bracket Welding Assembly B	1		85mm
6	81103243006	锂电池24V150Ah	Lithium Battery	1		
7	80912241036	外置充电器 QA1250A/24V30A	External Charger	1		With American-standard cable
8	50101100016	六角头螺栓M10×65	Hexagon bolt	2		
9	71503010001	进入滚子	Entry roller	2		
10	50311100001	六角锁紧螺母M10	Hex lock nut	2		
11	75901110007	推杆组件	Push Rod Assembly	2		85mm
12	50521161001	轴用弹性挡圈φ16	Shaft retaining ring	2		
13	50521252001	孔用弹性挡圈φ25	Hole-use resilient washer	2		
14	75101210011	圆环棒轴φ24.5*688	Ring Bar Shaft	2		
15	72901250001	复合衬套φ29*φ25*25	Composite bush	1		
16	72901160001	复合衬套φ18*φ16*15	Composite bush	2		
17	75101010011	摇臂焊合件	Rocker Arm Welding Assembly	1		85mm
18	50201060007	内六角圆柱头螺钉 M6*20	Hexagon socket cap screw	2		
19	50511060001	弹性垫圈φ6	Resilient washer	2		
20	50501060001	圆形垫圈φ6	Round washer	2		
21	77705050072	起升限位板	Lifting Limit Plate	1		

1.2 叉架组件(外置式、80mm)



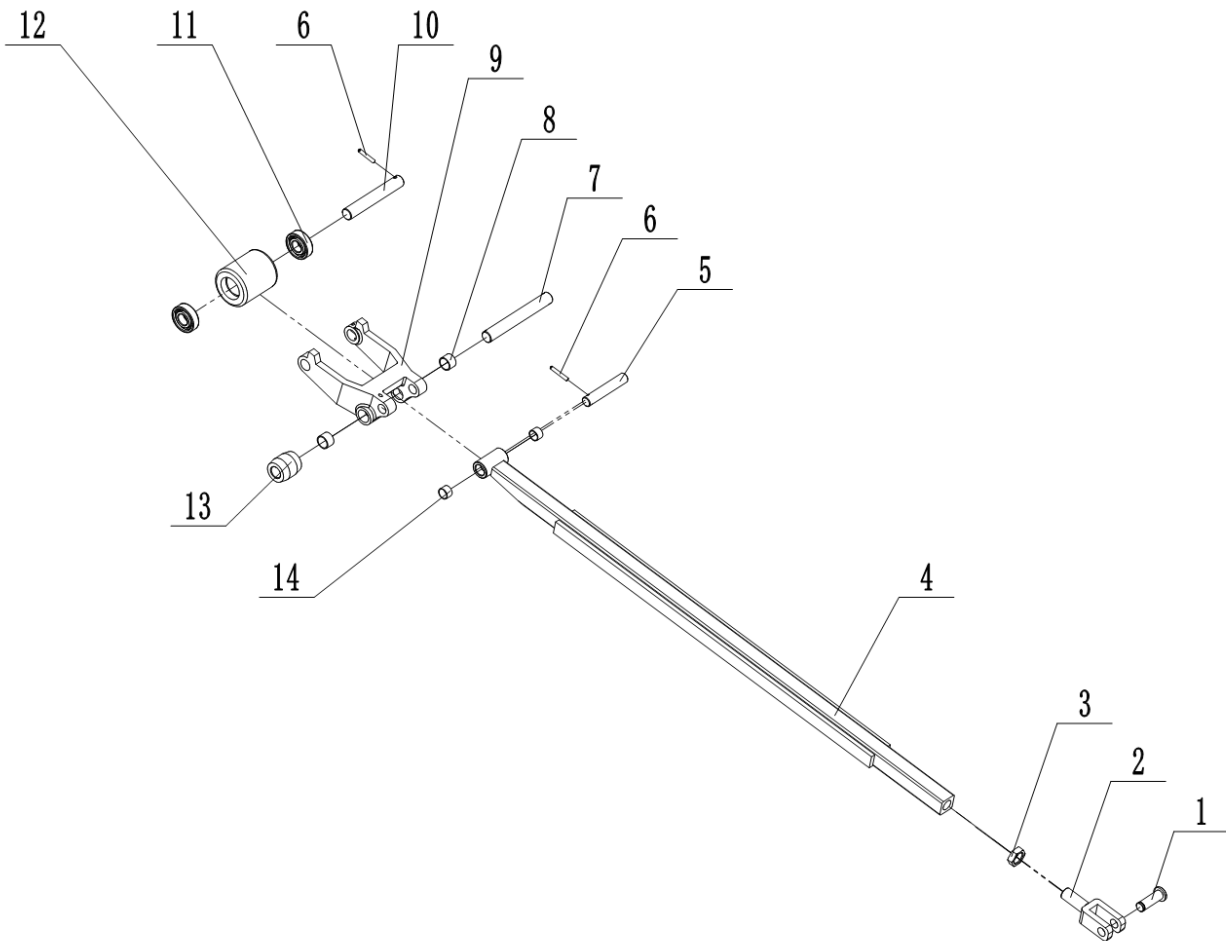
序号 Index	代码 Part No.	零件名称	Part Name	数量 Qty	适用日期 Applied Date	备注 Remark
1	70101200036	油缸固定轴	Cylinder Fixing Shaft	1		
2	72901200002	复合衬套φ23*φ20*20	Composite Bushing	4		
3	50501200013	圆形垫圈φ20	Round washer	1		
4	50521201001	轴用弹性挡圈φ20	Shaft retaining ring	1		
5	20105060037	叉架焊合B	Fork Bracket Welding Assembly B	1		80mm
6	81103243006	锂电池24V150Ah	Lithium Battery	1		
7	80912241036	外置充电器 QA1250A/24V30A	External Charger	1		With American-standard cable
8	50101100016	六角头螺栓M10×65	Hexagon bolt	2		
9	71503010001	进入滚子	Entry roller	2		
10	50311100001	六角锁紧螺母M10	Hex lock nut	2		
11	75901110011	推杆组件	Push Rod Assembly	2		80mm
12	50521161001	轴用弹性挡圈φ16	Shaft retaining ring	2		
13	50521252001	孔用弹性挡圈φ25	Hole-use resilient washer	2		
14	75101210011	圆环棒轴φ24.5*688	Ring Bar Shaft	2		
15	72901250001	复合衬套φ29*φ25*25	Composite bush	1		
16	72901160001	复合衬套φ18*φ16*15	Composite bush	2		
17	75101010013	摇臂焊合件	Rocker Arm Welding Assembly	1		80mm
18	50201060007	内六角圆柱头螺钉 M6*20	Hexagon socket cap screw	2		
19	50511060001	弹性垫圈φ6	Resilient washer	2		
20	50501060001	圆形垫圈φ6	Round washer	2		
21	77705050072	起升限位板	Lifting Limit Plate	1		

1.3 推杆组件(85mm)



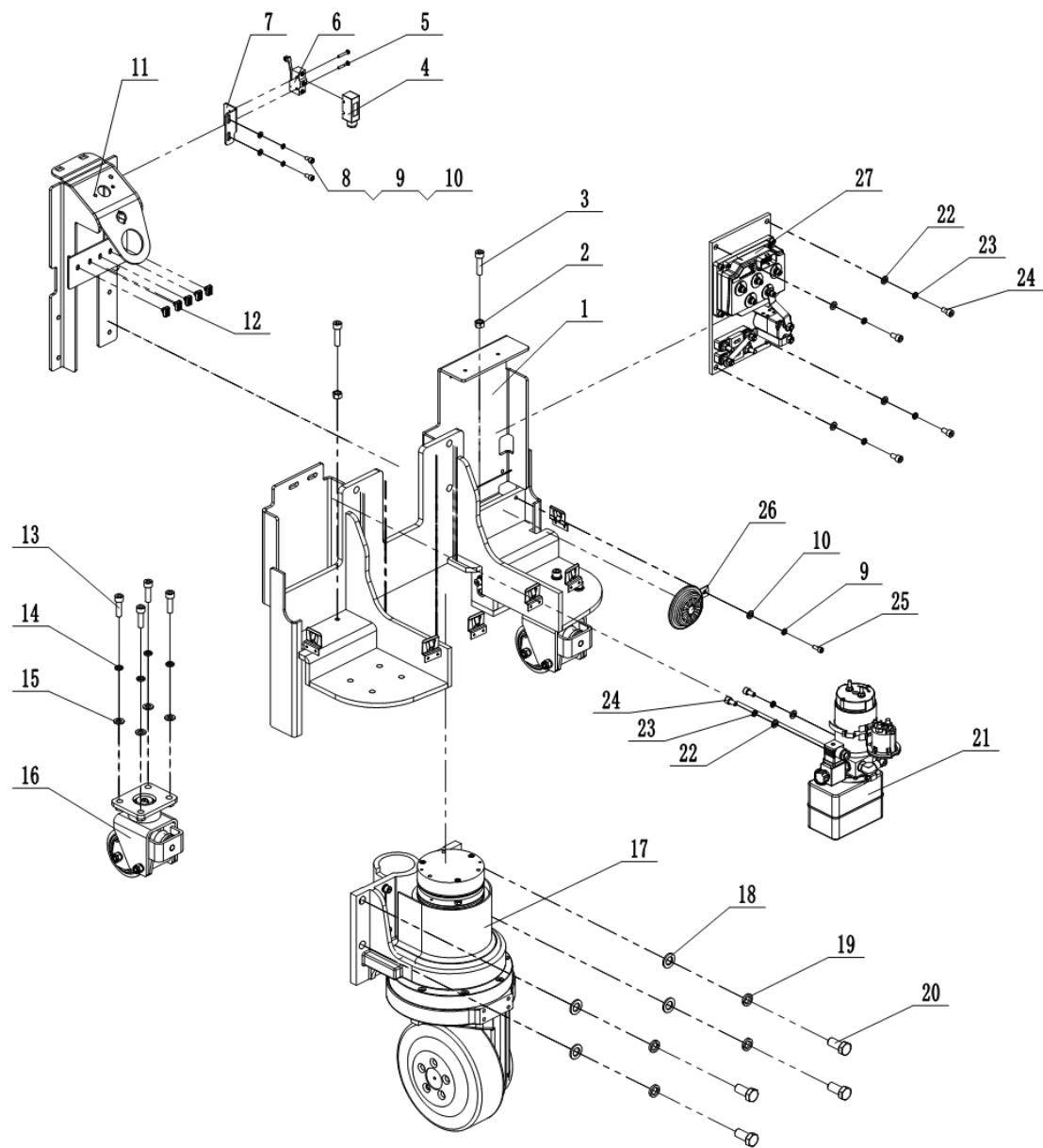
序号 Index	代码 Part No.	零件名称	Part Name	数量 Qty	适用日期 Applied Date	备注 Remark
1	70101160013	带肩销轴φ16*52	Shoulder Pin Shaft	1		
2	75901210003	螺纹叉	Threaded Fork	1		
3	50362200001	六角薄螺母M20*1.5	Hexagon thin nut	1		
4	75901010018	推杆焊合	Push Rod Welding Assembly	1		
5	70101170003	推杆轴φ17*94	Push Rod Shaft	1		
6	50601050006	弹性圆柱销φ5*35	Spring pin	2		
7	70101200009	力臂销φ20*152	Lever pin	1		
8	72901200005	复合衬套 φ23*φ20*15	Composite bush	2		
9	75103010006	力臂块	Lever Arm Block	1		
10	70101200040	小轮轴φ20*130	Small Wheel Axle	1		
11	50801200002	深沟球轴承 6204-2RS	Deep groove ball bearing	2		
12	71501110001	直轮φ80*93	Load wheel	1		85mm
13	71101010020	退出滚子 φ20*φ40*44	Exit Roller	1		
14	72901170001	复合衬套 φ19*φ17*12	Composite bush	2		

1.3 推杆组件(80mm)



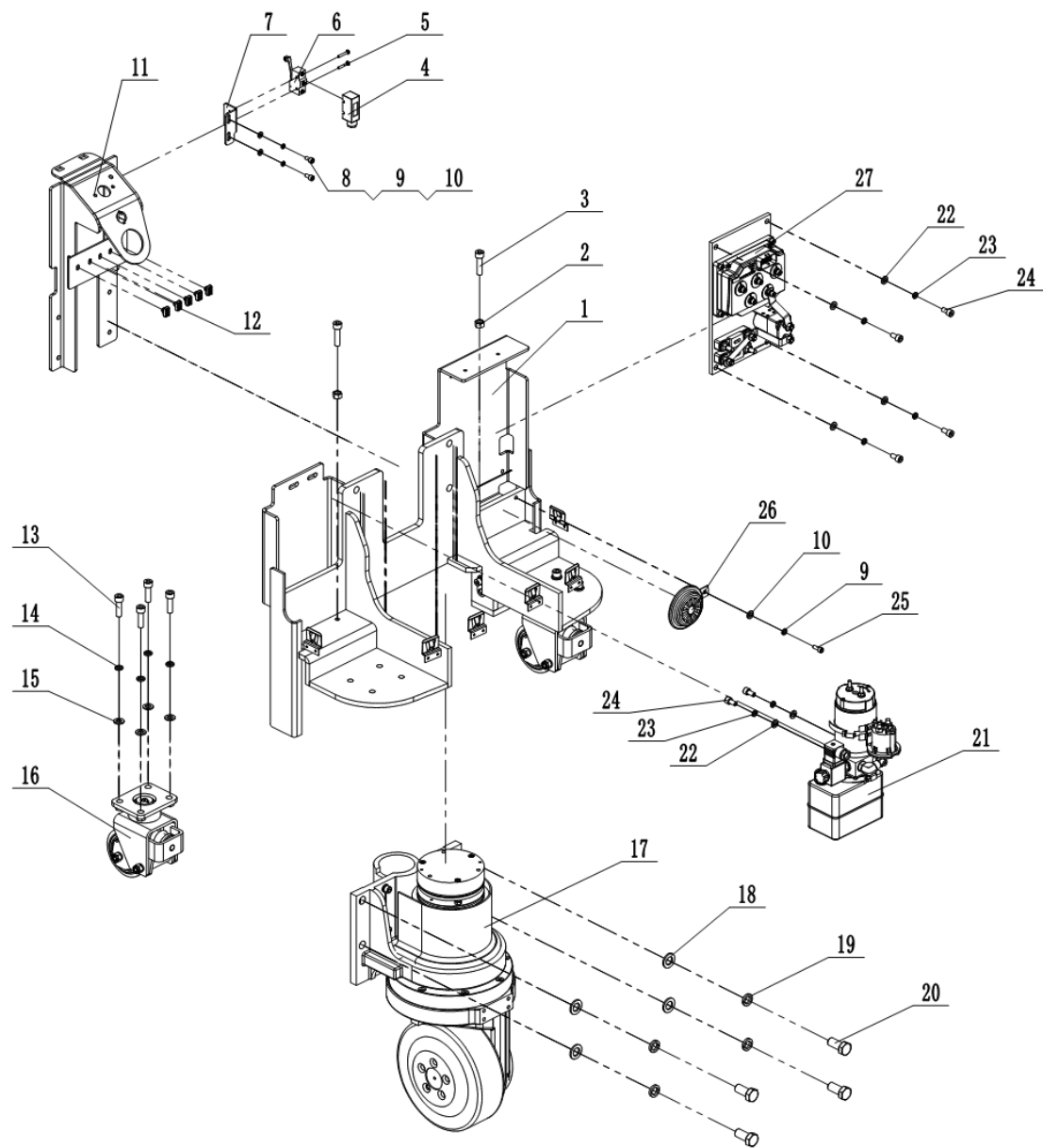
序号 Index	代码 Part No.	零件名称	Part Name	数量 Qty	适用日期 Applied Date	备注 Remark
1	70101160013	带肩销轴φ16*52	Shoulder Pin Shaft	1		
2	75901210003	螺纹叉	Threaded Fork	1		
3	50362200001	六角薄螺母M20*1.5	Hexagon thin nut	1		
4	75901010018	推杆焊合	Push Rod Welding Assembly	1		
5	70101170003	推杆轴φ17*94	Push Rod Shaft	1		
6	50601050006	弹性圆柱销φ5*35	Spring pin	2		
7	70101200009	力臂销φ20*152	Lever pin	1		
8	72901200005	复合衬套 φ23*φ20*15	Composite bush	2		
9	75103010006	力臂块	Lever Arm Block	1		
10	70101200040	小轮轴φ20*130	Small Wheel Axle	1		
11	50801200002	深沟球轴承 6204-2RS	Deep groove ball bearing	2		
12	71501010002	直轮φ74*93	Load wheel	1		80mm
13	71101010020	退出滚子 φ20*φ40*44	Exit Roller	1		
14	72901170001	复合衬套 φ19*φ17*12	Composite bush	2		

2. 车架总成(内置式)



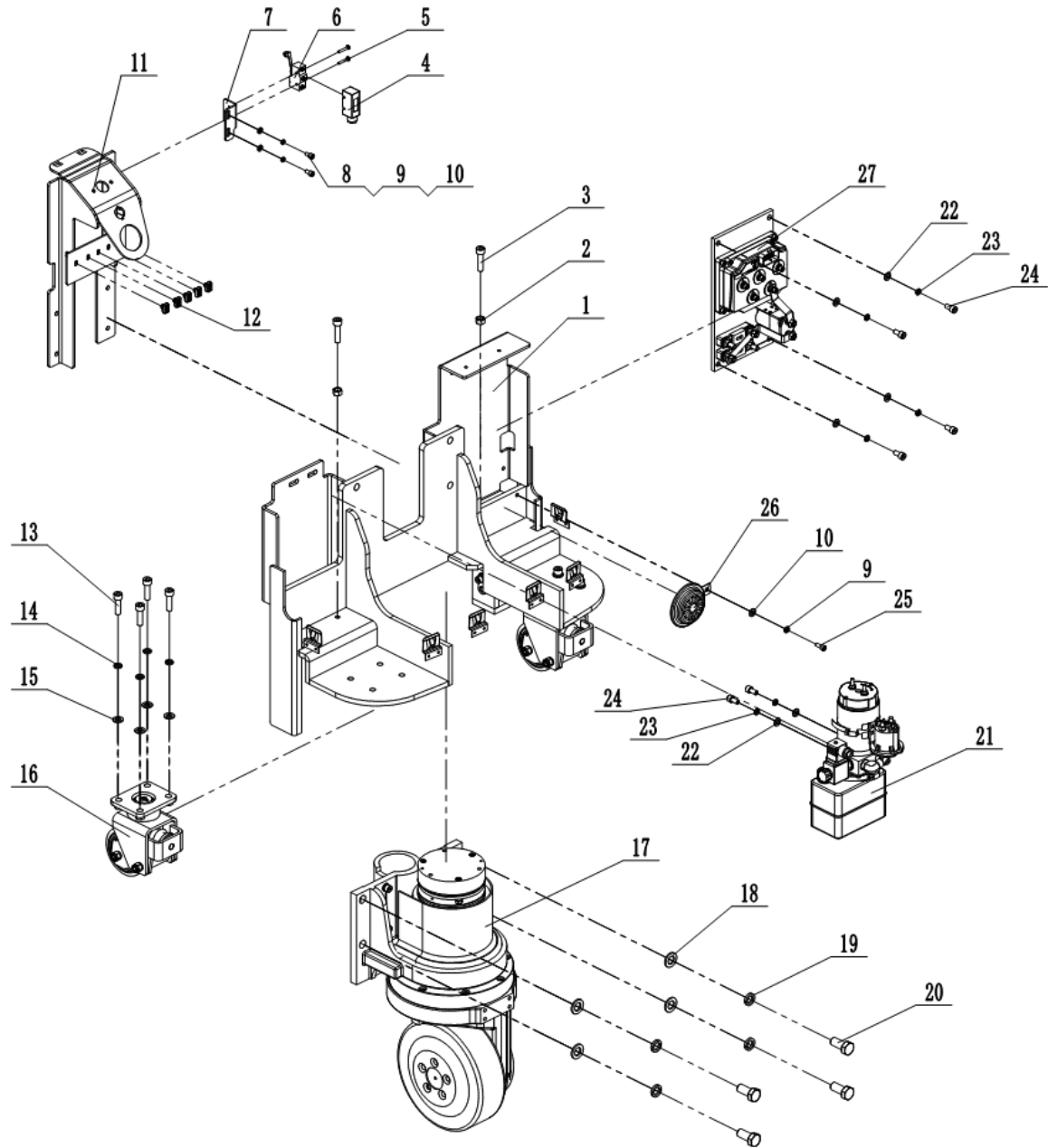
序号 Index	代码 Part No.	零件名称	Part Name	数量 Qty	适用日期 Applied Date	备注 Remark
1	20105010025	车架焊合	Chassis weld assembly	1		
2	50301100001	六角螺母M10	Hex nut	2		
3	50201100018	内六角圆柱头螺钉 M10*40	Hexagon socket cap screw	2		
4	85100000001	限位开关保护套	Limit Switch Protective Cover	1		
5	50211040007	十字槽盘头螺钉 M4*25	Hexagon socket cap screw	2		
6	80101010018	限位开关LXW5-11G1	Limit switch	1		
7	77705050085	开关安装板	Switch mounting plate	1		
8	50201060002	内六角圆柱头螺钉 M6*12	Hexagon socket cap screw	2		
9	50511060001	弹性垫圈φ6	Resilient washer	3		
10	50501060001	圆形垫圈φ6	Round washer	3		
11	77705050088	支架焊合	Bracket Welding Assembly	1		内置式
12	73690010010	塑料卡扣	Plastic Snap Clip	5		
13	50201100007	内六角圆柱头螺钉 M10*35	Hexagon socket cap screw	8		
14	50511100001	弹性垫圈φ10	Resilient washer	8		
15	50501100001	圆形垫圈φ10	Round washer	8		

2. 车架总成(内置式)



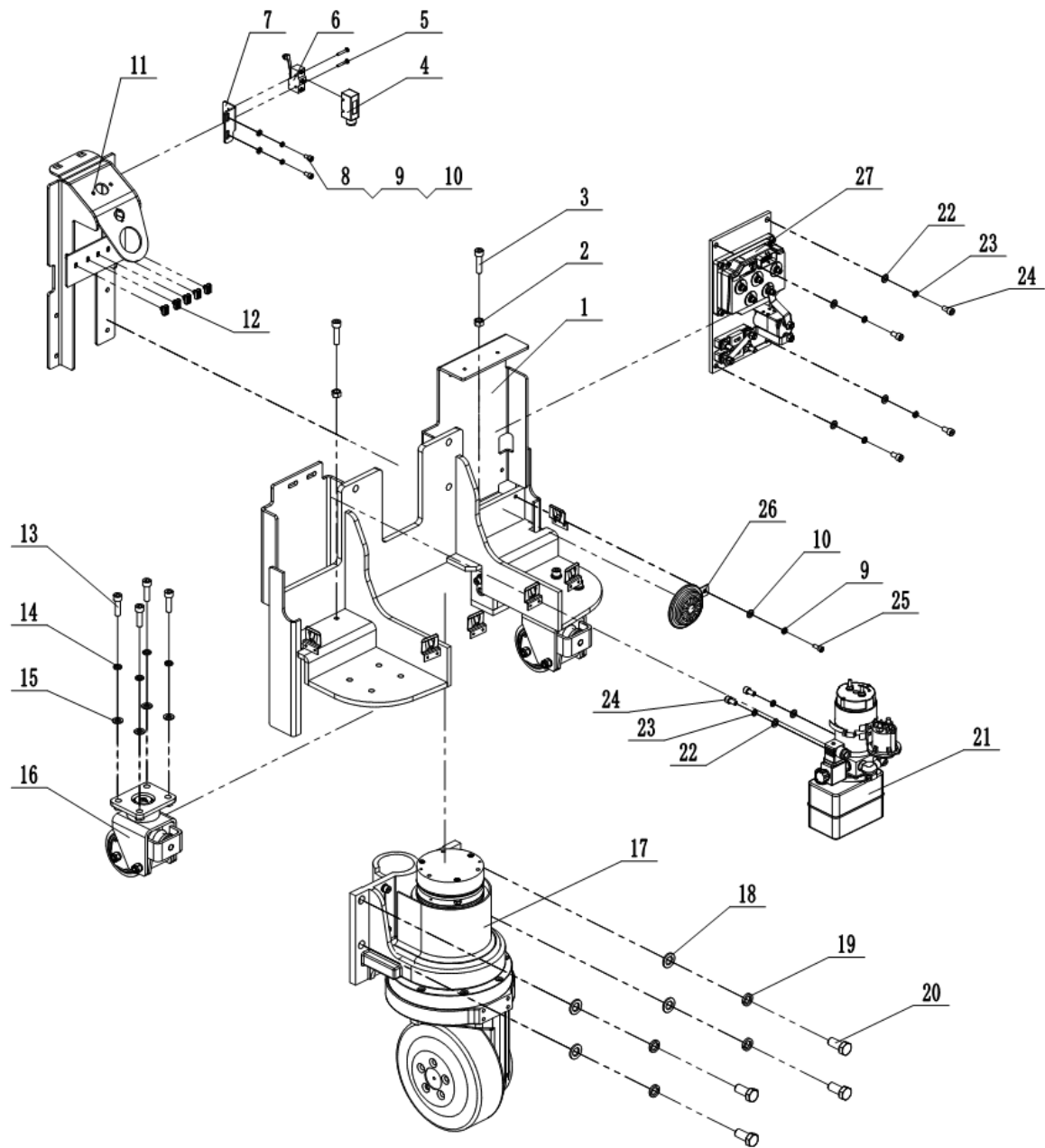
序号 Index	代码 Part No.	零件名称	Part Name	数量 Qty	适用日期 Applied Date	备注 Remark
16	20105110032	平衡轮总成	Balance Wheel Assembly	2		
17	20105110033	驱动总成	Drive Assembly	1		
18	50501160001	圆形垫圈	Round washer	4		
19	50511160001	弹性垫圈	Resilient washer	4		
20	50101160001	六角头螺栓	Hexagon bolt	4		
21	61601243005	卧式动力单元组件	Horizontal Power Unit Assembly	1		
22	50501080001	圆形垫圈	Round washer	6		
23	50511080001	弹性垫圈	Resilient washer	6		
24	50201080002	内六角圆柱头螺钉	Hexagon socket cap screw	6		
25	50201060005	内六角圆柱头螺钉	Hexagon socket cap screw	1		
26	80325010001	喇叭	Horn	1		
27	20105110030	控制器组件	Controller Assembly	1		

2. 车架总成(外置式)



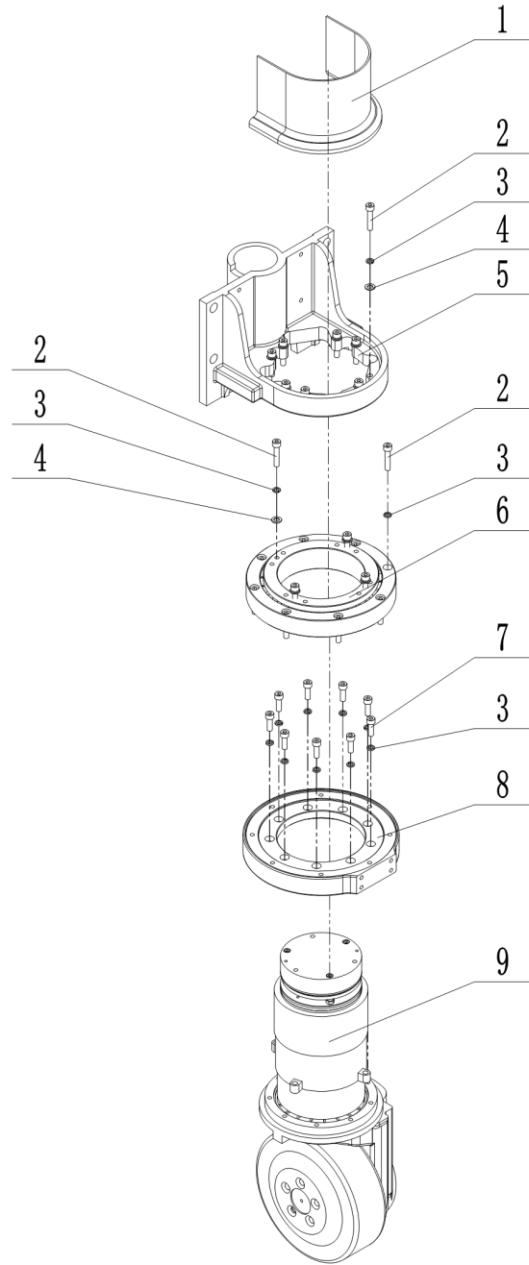
序号 Index	代码 Part No.	零件名称	Part Name	数量 Qty	适用日期 Applied Date	备注 Remark
1	20105010025	车架焊合	Chassis weld assembly	1		
2	50301100001	六角螺母M10	Hex nut	2		
3	50201100018	内六角圆柱头螺钉 M10*40	Hexagon socket cap screw	2		
4	85100000001	限位开关保护套	Limit Switch Protective Cover	1		
5	50211040007	十字槽盘头螺钉 M4*25	Hexagon socket cap screw	2		
6	80101010018	限位开关LXW5-11G1	Limit switch	1		
7	77705050085	开关安装板	Switch mounting plate	1		
8	50201060002	内六角圆柱头螺钉 M6*12	Hexagon socket cap screw	2		
9	50511060001	弹性垫圈φ6	Resilient washer	3		
10	50501060001	圆形垫圈φ6	Round washer	3		
11	77705050101	支架焊合	Bracket Welding Assembly	1		外置式
12	73690010010	塑料卡扣	Plastic Snap Clip	5		
13	50201100007	内六角圆柱头螺钉 M10*35	Hexagon socket cap screw	8		
14	50511100001	弹性垫圈φ10	Resilient washer	8		
15	50501100001	圆形垫圈φ10	Round washer	8		

2. 车架总成(外置式)



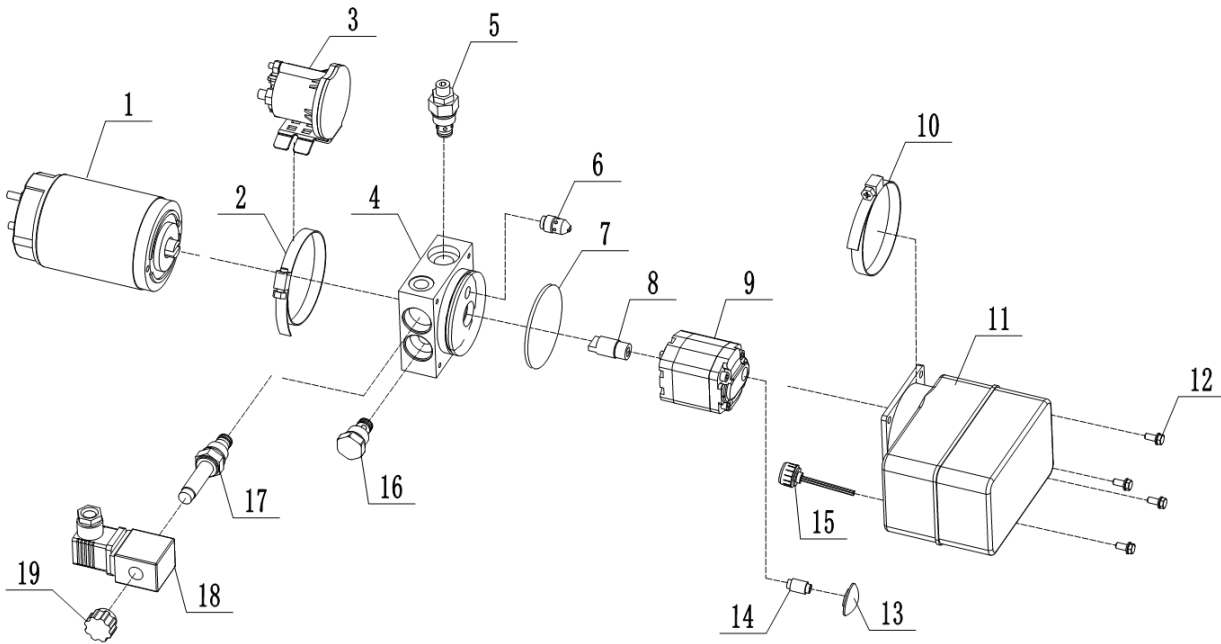
序号 Index	代码 Part No.	零件名称	Part Name	数量 Qty	适用日期 Applied Date	备注 Remark
16	20105110032	平衡轮总成	Balance Wheel Assembly	2		
17	20105110033	驱动总成	Drive Assembly	1		
18	50501160001	圆形垫圈	Round washer	4		
19	50511160001	弹性垫圈	Resilient washer	4		
20	50101160001	六角头螺栓	Hexagon bolt	4		
21	61601243005	卧式动力单元组件	Horizontal Power Unit Assembly	1		
22	50501080001	圆形垫圈	Round washer	6		
23	50511080001	弹性垫圈	Resilient washer	6		
24	50201080002	内六角圆柱头螺钉	Hexagon socket cap screw	6		
25	50201060005	内六角圆柱头螺钉	Hexagon socket cap screw	1		
26	80325010001	喇叭	Horn	1		
27	20105110030	控制器组件	Controller Assembly	1		

2.1 驱动总成 || Driving Power Assembly



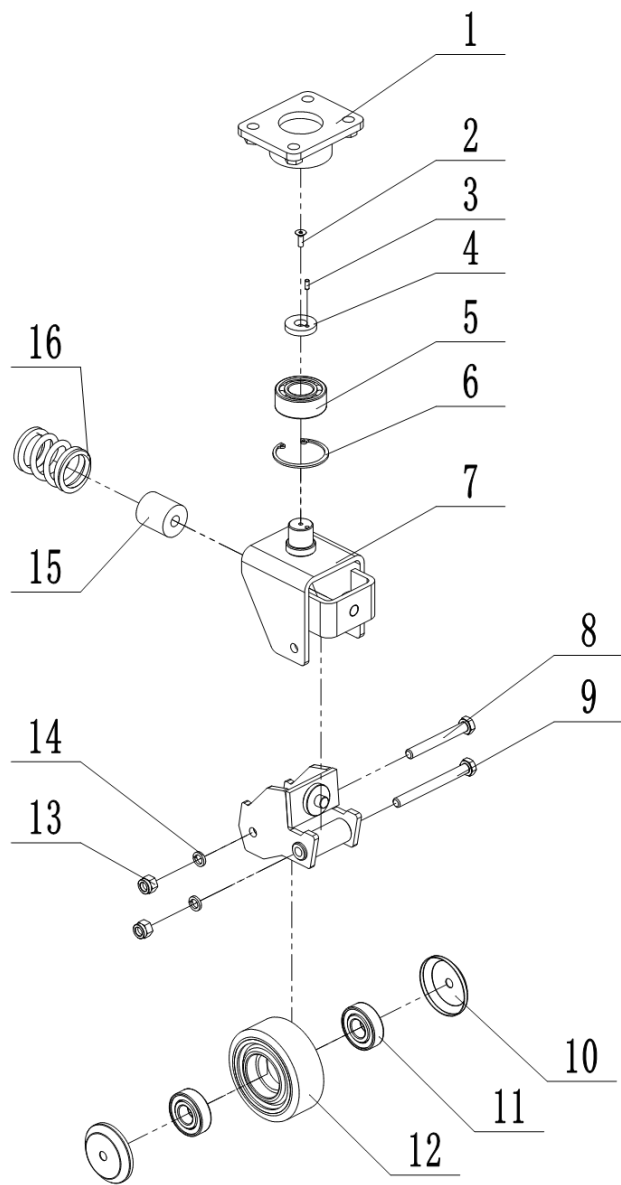
序号 Index	代码 Part No.	零件名称	Part Name	数量 Qty	适用日期 Applied Date	备注 Remark
1	73505016003	驱动罩	Drive Cover	1		
2	50201080018	内六角圆柱头螺钉 M8*40	Hexagon socket cap screw	20		
3	50511080001	弹性垫圈φ8	Resilient washer	29		
4	50501080001	圆形垫圈φ8	Round washer	12		
5	77705050090	驱动安装座	Drive Mounting Bracket	1		
6	50810000001	回转轴承	Slewing Bearing	1		
7	50201080004	内六角圆柱头螺钉 M8*25	Hexagon socket cap screw	9		
8	77705050089	法兰	Flange	1		
9	83103240002	立式驱动轮总成	Vertical Drive Wheel Assembly	1		1.3KW电机

2.3 动力单元总成 || Power Unit Assembly



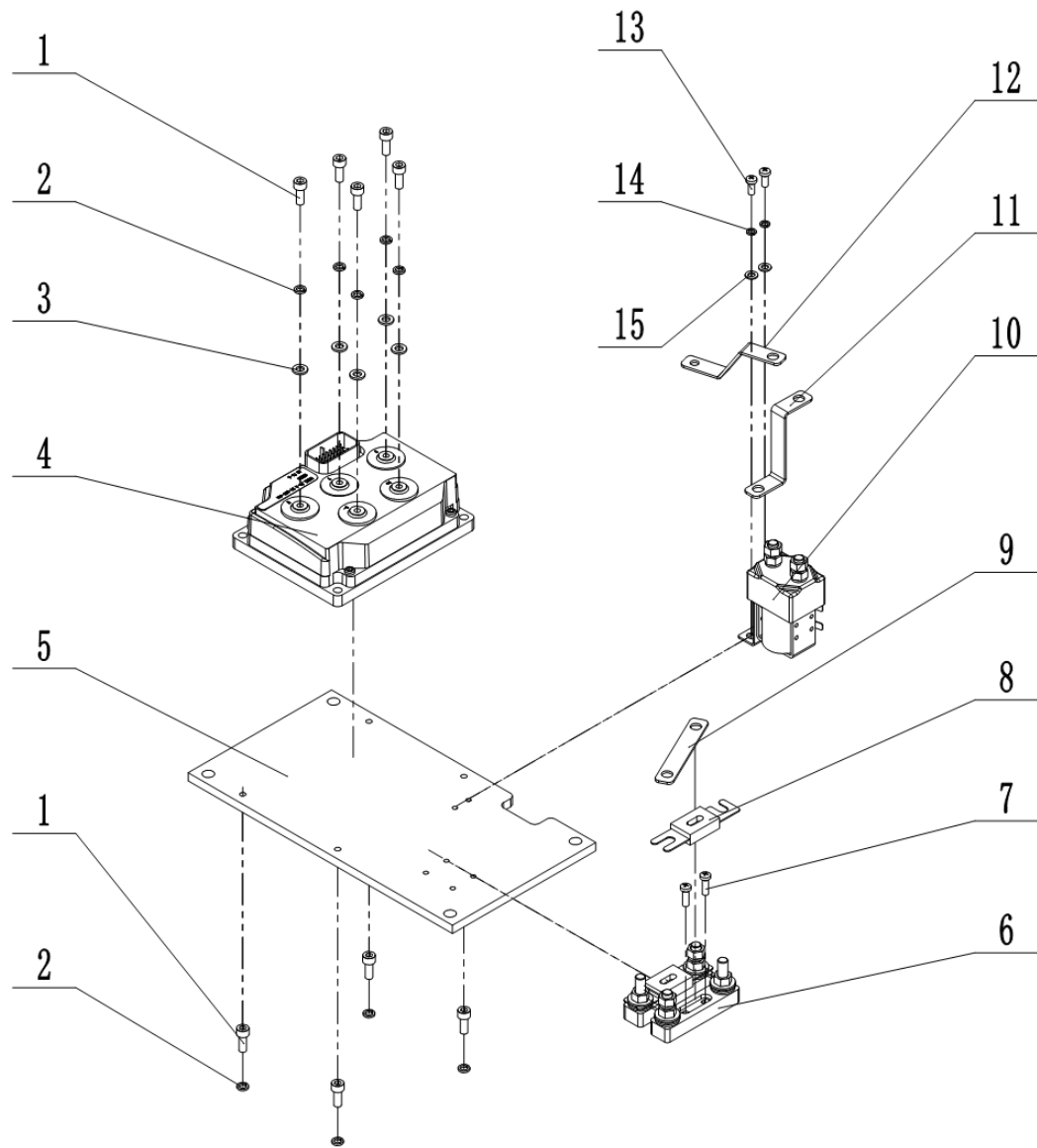
序号 Index	代码 Part No.	零件名称	Part Name	数量 Qty	适用日期 Applied Date	备注 Remark
1	A5021102116	直流电机 QS-24V-800W-A	DC motor	1		
2	A7060355023	抱箍Φ65-Φ89	Fastening hoop	1		
3	A6162607024	接触器 DC24V 150A	Contactors	1		
4	A6162603022	阀块 DLK31-303	Valve block	1		
5	A6163101037	直动式溢流阀 YF08-00	Direct-acting relief valve	1		
6	A7060621071	压力补偿节流阀 BLF06-G1/4-4L	Pressure-compensated flow control valve	1		
7	A6165102016	O型圈D67-2.65	O-ring	1		
8	A7010110020	EPT15Q.02.01-07联轴器 器	Coupling	1		
9	A6165109075	齿轮泵 CBU-F110 0.65cc/r右 旋	Gear pump	1		
10	A7060901035	抱箍Φ105-Φ127	Fastening hoop	1		
11	A5020120015	油箱 73口径 1L	Oil box	1		
12	A7010110021	六角头螺栓M5x16	Hexagon bolt	4		
13	A6019001064	滤网 43	Filter mesh	1		
14	A7900301034	吸油管 G1/4-G3/8-40	Oil suction pipe	1		
15	A8090124015	油箱盖	Tank cap	1		
16	A7310207919	单向阀钢球型 DF08-01	Check Valve	1		
17	A6117101615	L常闭电磁阀(二位二 通) HSV2-08-2NCP	Normally Closed Solenoid Valve	1		
18	A6163601016	电磁阀线圈 DC 24V三插	Solenoid Valve Coil	1		
19	A5050103015	塑料螺母M10*20	Plastic Nut	1		

2.3 平衡轮总成 || Balance Wheel Assembly



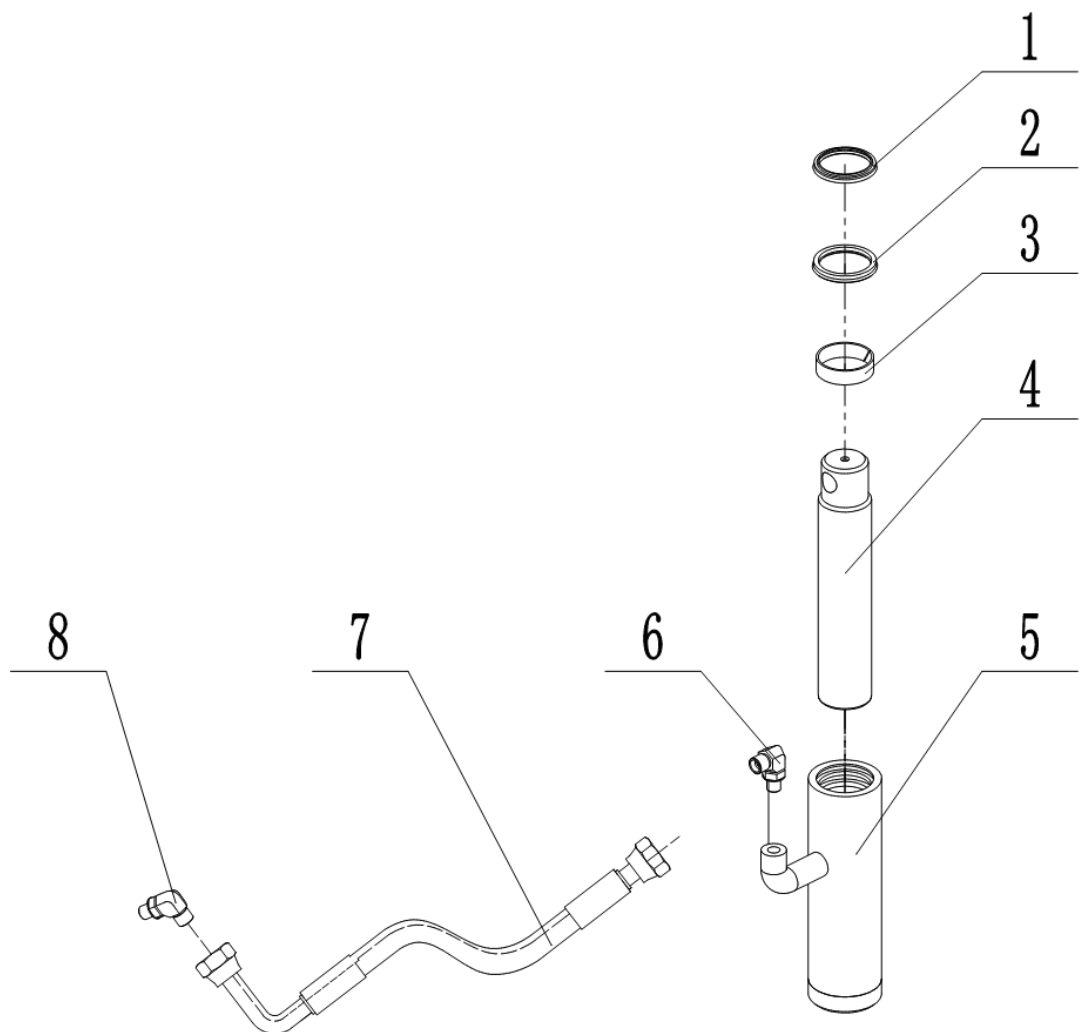
序号 Index	代码 Part No.	零件名称	Part Name	数量 Qty	适用日期 Applied Date	备注 Remark
1	77705050086	连接板焊合	Welded Connection Plate Assembly	1		
2	50203050003	内六角沉头螺钉 M5×16	Hexagon socket countersunk head screw	1		
3	50601040008	圆柱销4×10	Cylindrical pin	1		
4	70608060003	挡片	Retaining plate	1		
5	50807250003	角接触球轴承 S3205A-2RS	Angular Contact Ball Bearing	1		
6	50521522001	孔用弹性挡圈φ52	Hole-use resilient washer	1		
7	77705050087	轮架焊合	Wheel Bracket Welding Assembly	1		
8	50101100027	六角头螺栓M10×80	Hexagon bolt	1		
9	50101100028	六角头螺栓M10×100	Hexagon bolt	1		
10	77706050053	防尘盖	Dust Cover	2		
11	50801200002	深沟球轴承6204-2RS	Deep groove ball bearing	2		
12	71501110011	直轮φ100*40	Load wheel	1		
13	50311100001	锁紧螺母M10	Lock nut	2		
14	50511100001	弹性垫圈φ10	Resilient washer	2		
15	73631110001	弹性体φ13*φ35*54	Elastomer	1		
16	70901060001	压缩弹簧φ6*47*65	Compression spring	1		

2.4 控制器组件 || Controller Component



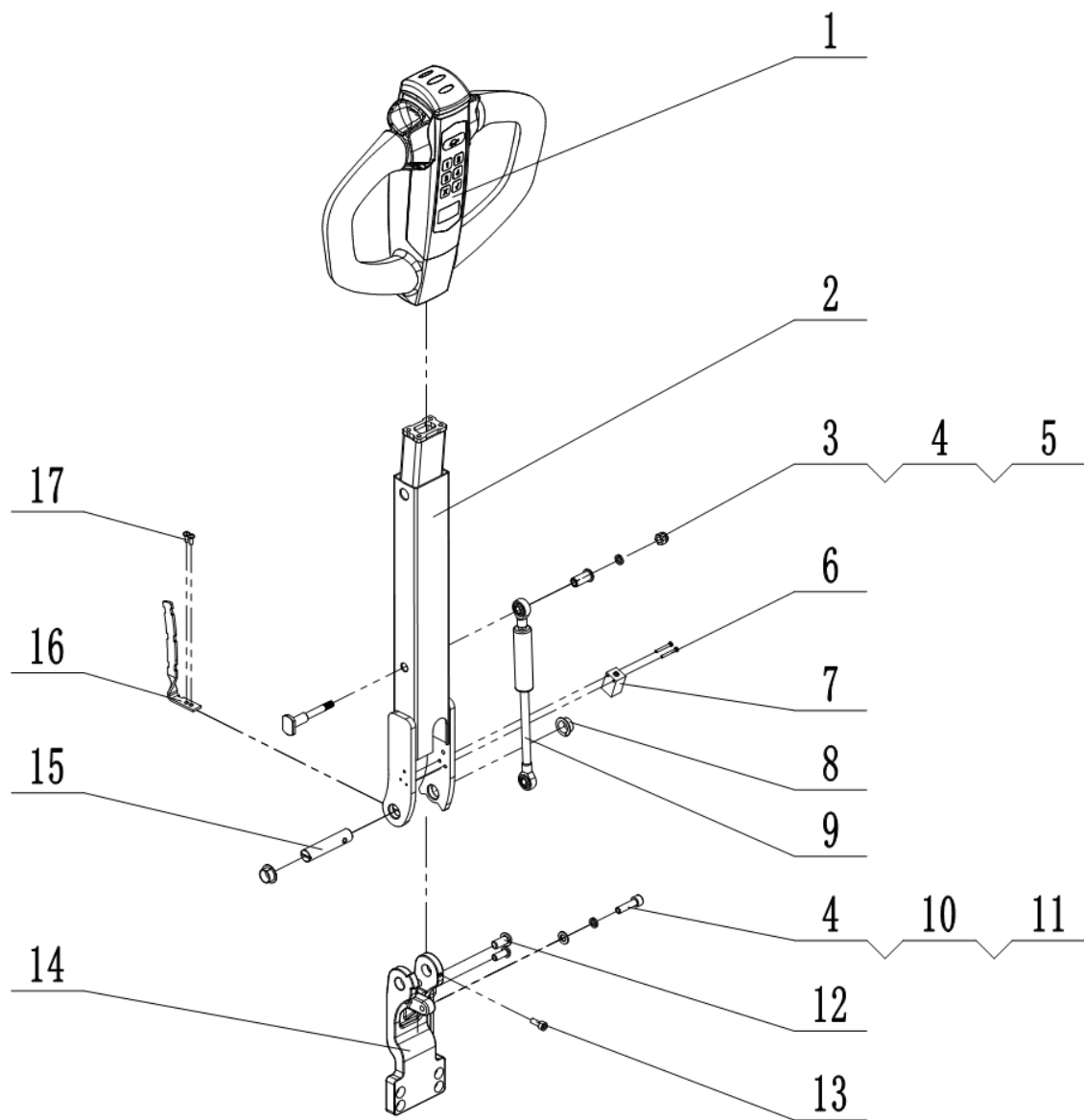
序号 Index	代码 Part No.	零件名称	Part Name	数量 Qty	适用日期 Applied Date	备注 Remark
1	50201060005	内六角圆柱头螺钉M6×16	Hexagon socket cap screw	9		
2	50511060001	弹性垫圈φ6	Resilient washer	9		
3	50501060001	圆形垫圈φ6	Round washer	5		
4	80601241004	控制器AC F2-A-24-200-001	Controller	1		
5	77705050084	电控安装板	Electrical Control Mounting Panel	1		
6	81603010001	保险丝座ANL-N	Fuse holder	2		
7	50211050001	十字槽盘头螺钉M5*16	Hexagon socket cap screw	4		
8	81601010002	保险丝ANL-200A	Fuse wire	2		
9	77709010011	保险连接铜条	Fuse Link Copper Busbar	1		
10	80627010003	接触器ZJWP100L-EP	Contactor	1		
11	77709010012	主接触器--保险连接铜条	Main Contactor - Fused Copper Busbar Assembly	1		
12	77709010020	B+连接铜条	B+ Positive Terminal Copper Busbar	1		
13	50211050005	十字槽盘头螺钉M5*12	Hexagon socket cap screw	2		
14	50511050001	弹性垫圈φ5	Resilient washer	2		
15	50501050001	圆形垫圈φ5	Round washer	2		

3. 油缸总成 || Oil Cylinder Assembly



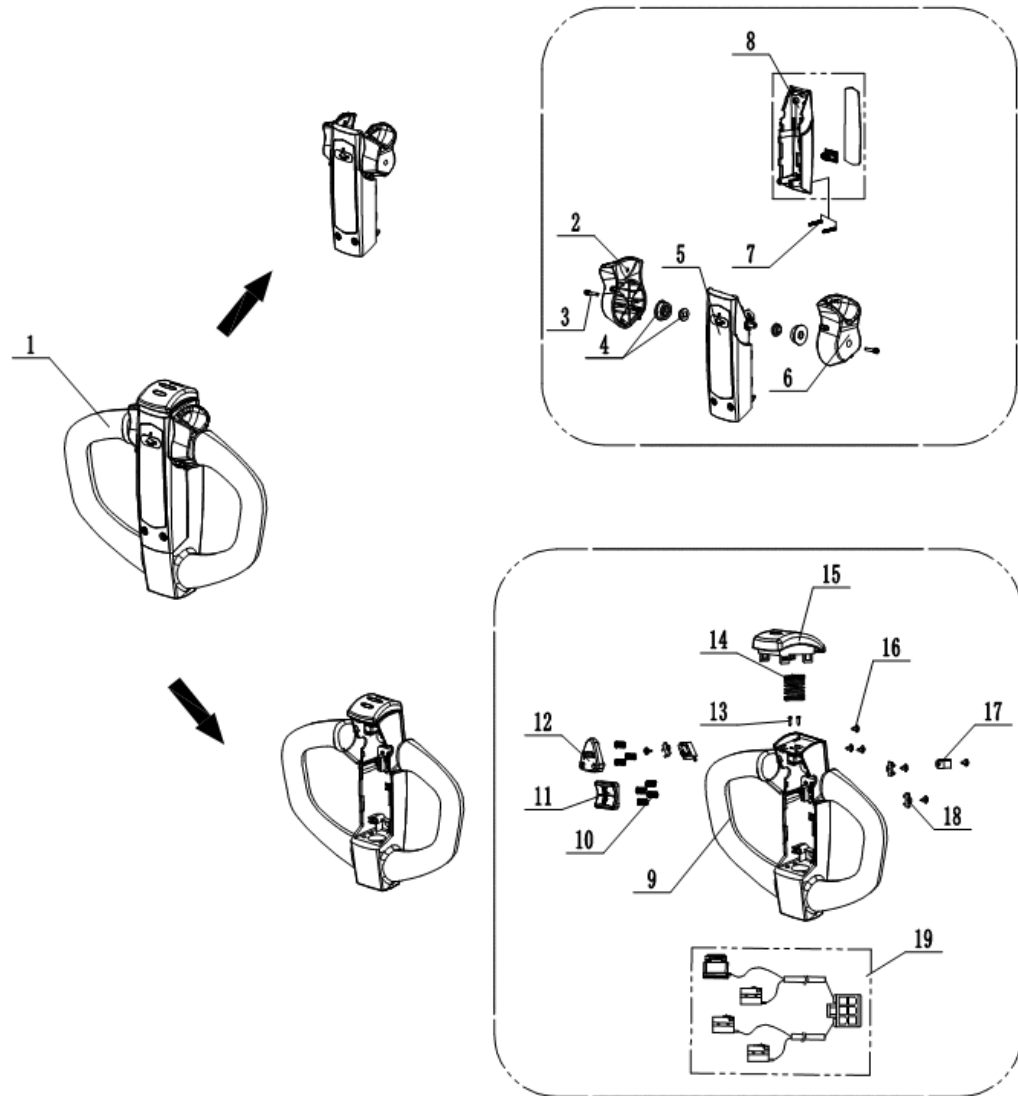
序号 Index	代码 Part No.	零件名称	Part Name	数量 Qty	适用日期 Applied Date	备注 Remark
1	61171210010	防尘圈 φ50*φ58*5/6.5	Dust proof ring	1		
2	61171110010	密封圈 φ50*φ60*6	Seal ring	1		
3	73605150001	导向环 50*55*15	Guide Ring	1		
4	A7310207921	活塞杆	Piston rod	1		
5	A6117101617	缸筒焊合	Cylinder Barrel Welding Assembly	1		
6	A6163601018	直角接头	90° Elbow Fitting	1		
7	A5050103017	油管	Oil pipe	1		
8	60602010002	直角接头	Right-angle joint	1		

4. 操作系统总成 || Operating System Assembly



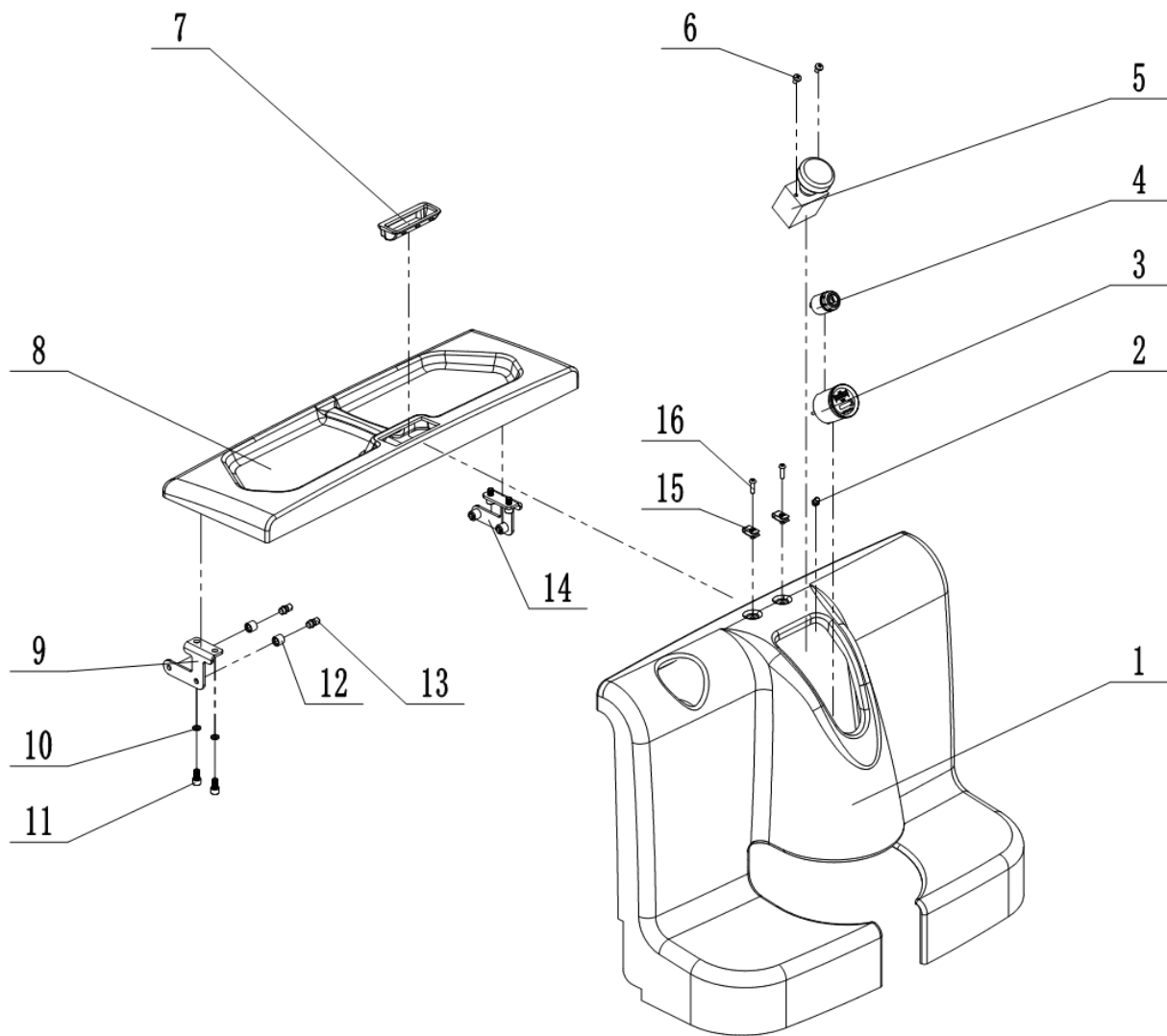
序号 Index	代码 Part No.	零件名称	Part Name	数量 Qty	适用日期 Applied Date	备注 Remark
1	82601240014	操作手柄T410A-9D	Operating handle	1		
2	75303010014	手柄杆焊合	Handle bar assembly	1		
3	70301050002	轴套	Axle sleeve	1		
4	50511080001	弹性垫圈φ8	Resilient washer	1		
5	50311080001	六角锁紧螺母M8	Hex lock nut	1		
6	50211030003	十字槽盘头螺钉 M3×25	Hexagon socket cap screw	2		
7	80119010009	接近开关 AZ17M05PNK 10- 30VDC	Approach switch	1		
8	72902160004	带肩复合衬套 16*18*10/24	Composite bush with shoulder	2		
9	70912160004	气弹簧YQ16-70- 245/700N	Gas spring	1		
10	50201080010	内六角圆柱头螺钉 M8×30	Hexagon socket cap screw	1		
11	50501080001	圆形垫圈φ8	Round washer	1		
12	50205100004	内六角平圆头螺钉 M10×20	Hex socket button head screw	2		
13	50201060005	内六角圆柱头螺钉 M6×16	Hexagon socket cap screw	1		
14	77705050082	关节座	Joint seat	1		
15	70101160005	手柄销轴φ16*75	Handle Pivot Pin	1		
16	77705050083	线束固定板	Wire harness mounting plate	1		
17	50211040003	十字槽盘头螺钉 M4×10	Hexagon socket cap screw	2		

4.1 手柄组件 || Handle Assembly



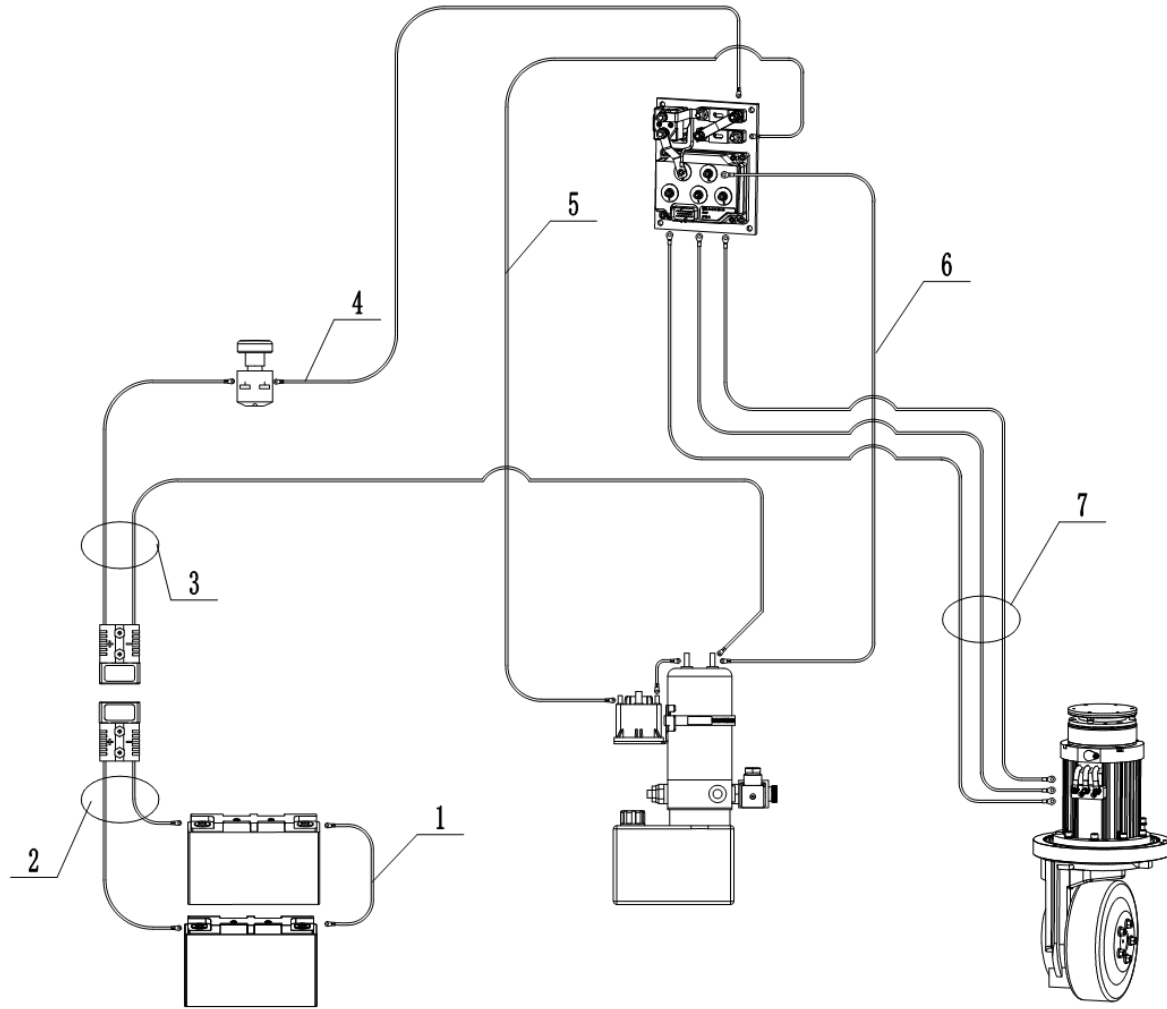
序号 Index	代码 Part No.	零件名称	Part Name	数量 Qty	适用日期 Applied Date	备注 Remark
1	82601240014	操作手柄T410A-9D	Operating handle	1		
2	A7060355024	左加速器旋钮	Left accelerator knob	1		
3	A6162607025	平弹垫三合一螺栓	Three-in-one flat spring washer bolt	2		
4	A6162603023	轴内外套总成	Inner/Outer Shaft Sleeve Assembly	2		
5	A6163101038	加速器总成	Accelerator assembly	1		
6	A7060621072	右加速器旋钮	Right accelerator knob	1		
7	A6165102017	内六角螺栓	Hex socket head cap screw	2		
8	A7010110022	下盖面膜组件	Lower cover membrane assembly	1		
9	A6165109076	大手柄上盖	Large handle upper cover	1		
10	A7060901036	压簧	Pressure spring	7		
11	A5020120016	升降按钮	Lift button	1		
12	A7010110023	喇叭按钮	Horn button	1		
13	A6019001065	自攻螺丝	Self-tapping screw	2		
14	A7900301035	压簧	Pressure spring	1		
15	A8090124016	肚皮开关	Emergency reverse button	1		
16	A7310207920	自攻螺丝	Self-tapping screw	7		
17	A6117101616	尼龙线夹	Nylon wire clamp	1		
18	A6163601017	微动开关定位片	Microswitch positioning plate	3		
19	A5050103016	微动开关总成	Microswitch assembly	1		

5. 覆盖件及其他 || Cover Parts



序号 Index	代码 Part No.	零件名称	Part Name	数量 Qty	适用日期 Applied Date	备注 Remark
1	73505016001	后面罩	Rear cover	1		
2	79003010010	金属灯座φ8	Metal lamp holder	1		
3	81301010010	圆形电量表 LEM-C-C-IO/24V	Round battery meter	1		
4	80109010001	钥匙开关JK530AMP	Key switch	1		
5	80107010002	急停开关ED250A	Emergency stop switch	1		
6	50211060001	十字槽盘头螺钉 M6*10	Hexagon socket cap screw	2		
7	73631100002	嵌入式拉手	Recessed handle	1		
8	73505016002	电瓶箱盖	Battery box cover	1		
9	77705050080	支架左	Left bracket	1		
10	50511080001	弹性垫圈φ8	Resilient washer	4		
11	50201080002	内六角圆柱头螺钉 M8*16	Hexagon socket cap screw	4		
12	73690010013	聚氨酯套	Polyurethane sleeve	4		
13	70301070006	螺钉	Screw	4		
14	77705050081	支架右	Right bracket	2		
15	70325060001	弹簧卡扣螺母M6	Spring Clip Nut	2		
16	50205060007	内六角平圆头螺钉 M6*20	Hex socket button head screw	2		

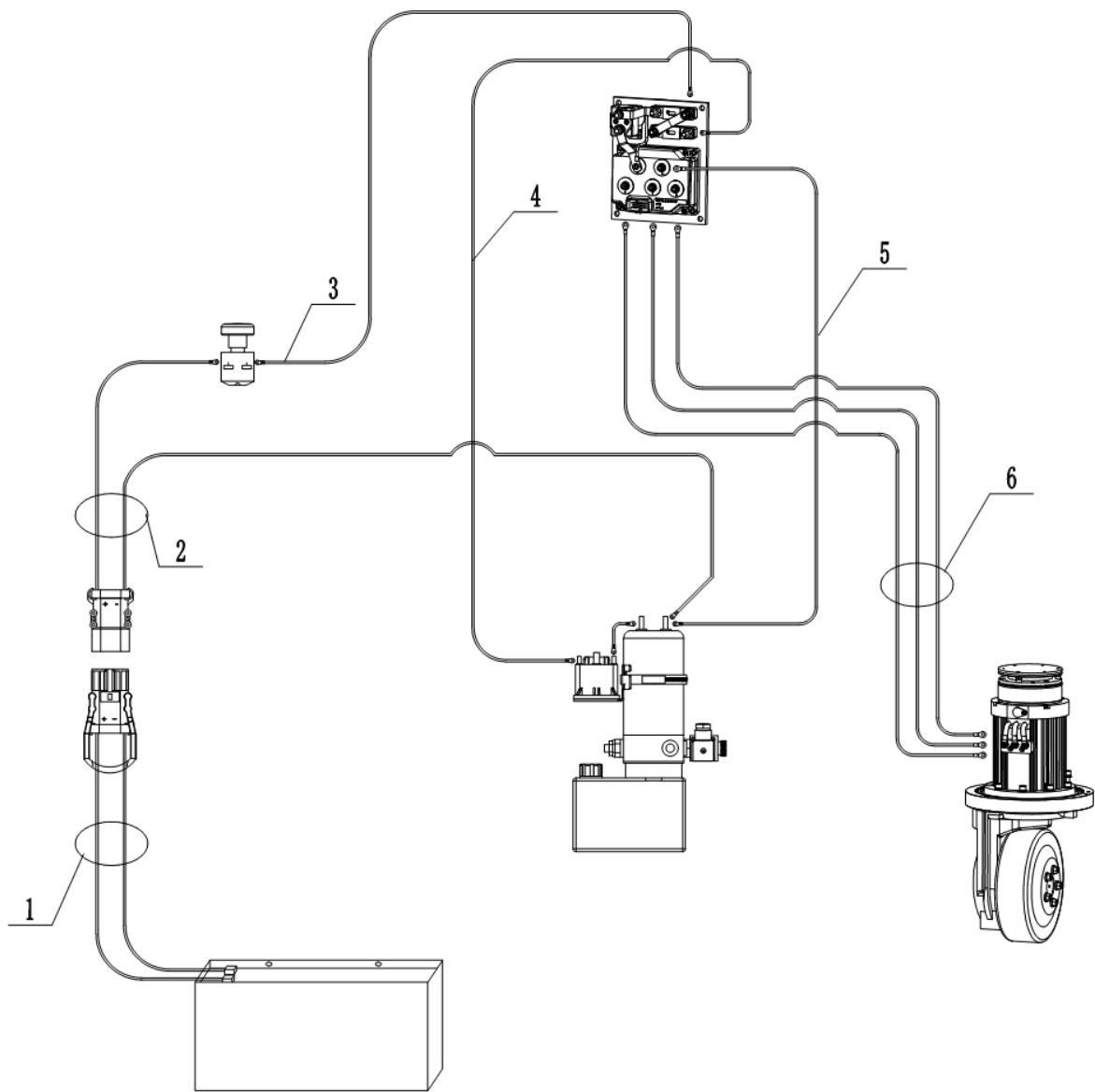
6.1 100AH 铅酸动力线部装图 || Drawing of Lead-acid Power Lines



序号 Index	代码 Part No.	零件名称	Part Name	数量 Qty	适用日期 Applied Date	备注 Remark
1	83711050054	电池连接电缆线	Battery connection cable	1		
2	83711050055	电瓶插头组件	Battery Plug Assembly	1		
3	83711050056	车体插头组件	Vehicle Body Plug Assembly	1		
4	83711050057	急停--保险电缆线	Emergency stop to fuse cable	1		
5	83711050058	保险--泵接触器电缆线	Fuse-to-Pump Contactor Cable	1		
6	83711050059	控制器负极电缆线	Controller negative cable	1		
7	83711050060	电机线材组件	Motor wiring harness assembly	1		

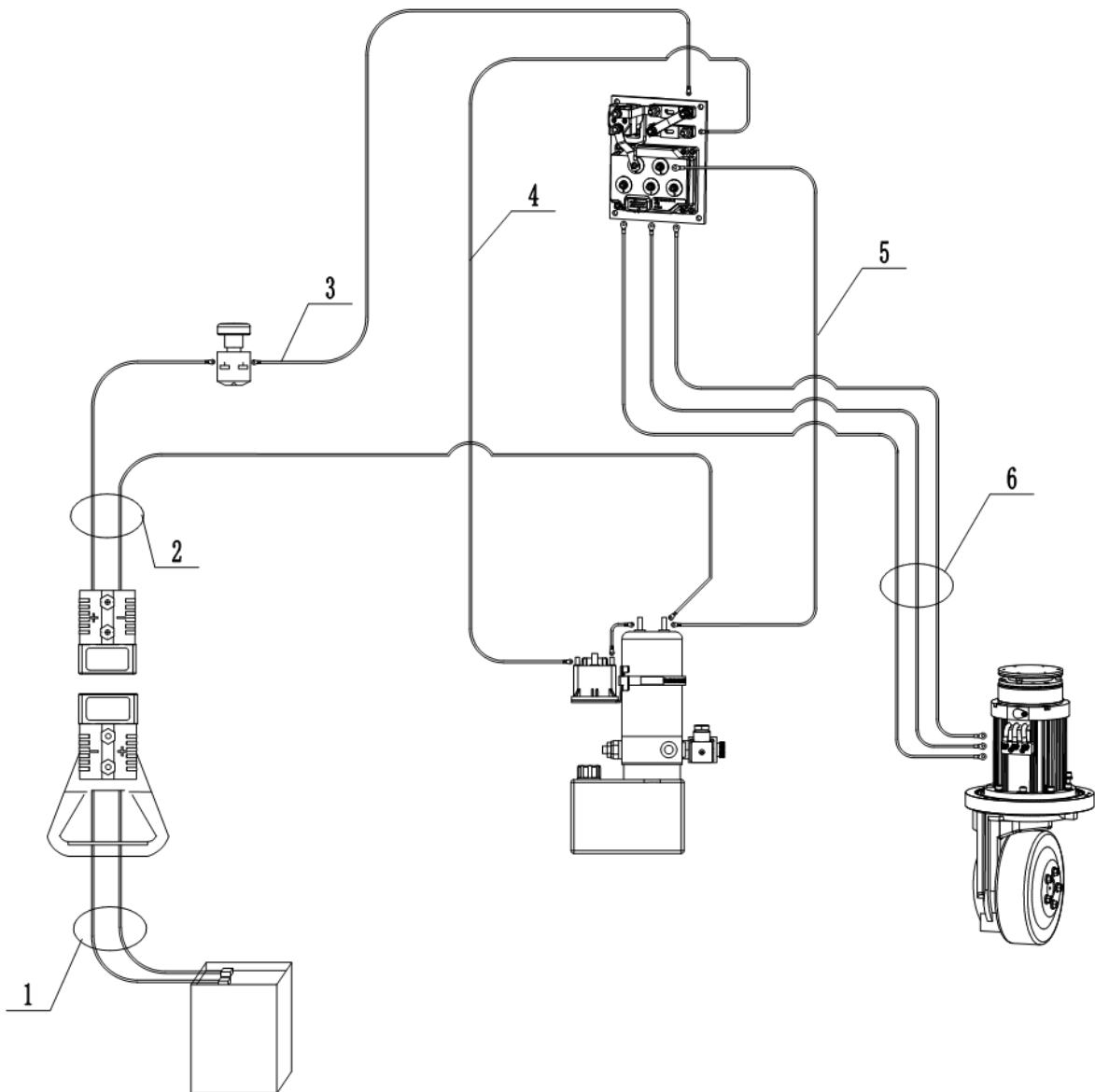
6.2 150AH 锂电/180铅酸 动力线部装图

Assembly diagram of lithium battery /180 lead-acid power line



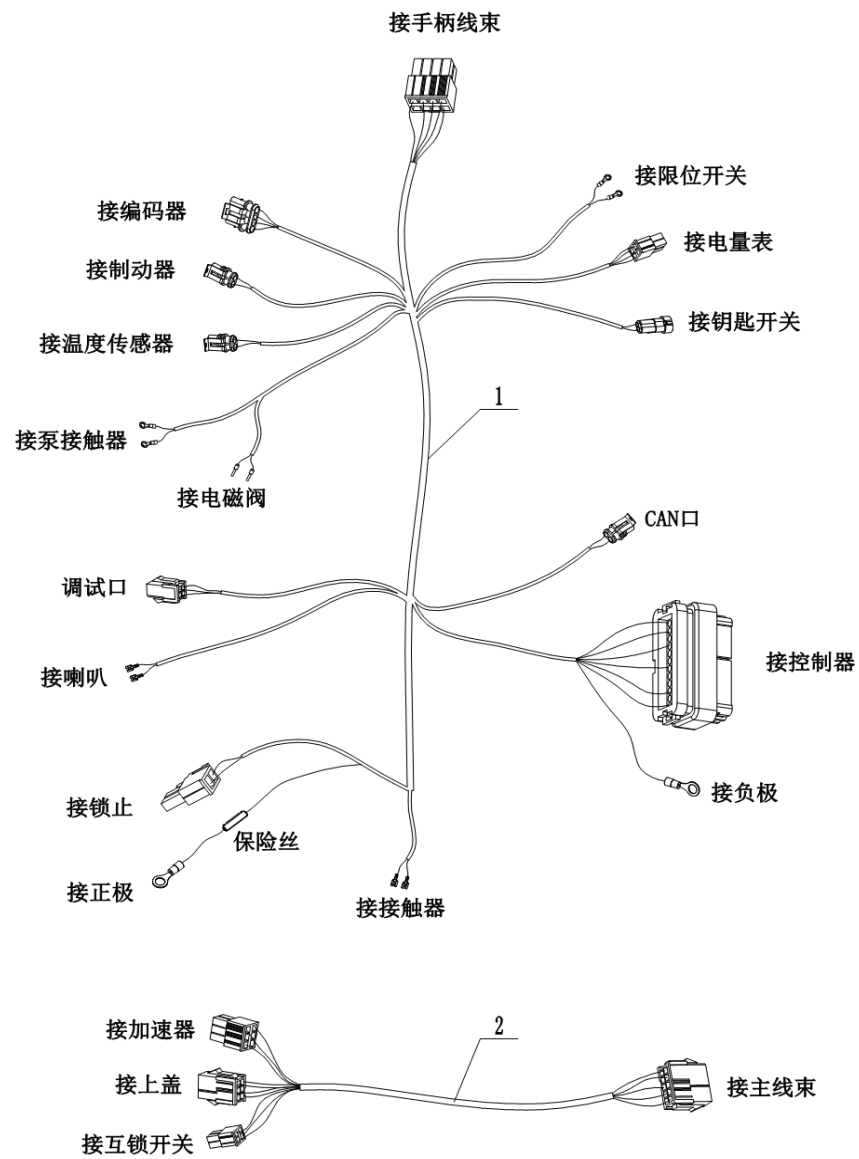
序号 Index	代码 Part No.	零件名称	Part Name	数量 Qty	适用日期 Applied Date	备注 Remark
1	83711050061	电瓶插头组件	Battery Plug Assembly	1		
2	83711050062	车体插头组件	Vehicle Body Plug Assembly	1		
3	83711050063	急停--保险电缆线	Emergency Stop-to-Fuse Cable	1		
4	83711050064	保险--泵接触器电缆线	Fuse-to-Pump Contactor Cable	1		
5	83711050065	控制器负极电缆线	Controller Negative Cable	1		
6	83711050066	电机线材组件	Motor Cable Assembly	1		

6.3 100AH 锂电动力线布装图 || Layout diagram of lithium battery power lines



序号 Index	代码 Part No.	零件名称	Part Name	数量 Qty	适用日期 Applied Date	备注 Remark
1	83711050067	电瓶插头组件	Battery Plug Assembly	1		
2	83711050068	车体插头组件	Vehicle Body Plug Assembly	1		
3	83711050069	急停--保险电缆线	Emergency Stop-to-Fuse	1		
4	83711050070	保险--泵接触器电缆线	Fuse-to-Pump Contactor Cable	1		
5	83711050071	控制器负极电缆线	Controller Negative	1		
6	83711050072	电机线材组件	Motor Cable Assembly	1		

6.4. 控制线束接线图 || Control wiring harness wiring diagram



序号 Index	代码 Part No.	零件名称	Part Name	数量 Qty	适用日期 Applied Date	备注 Remark
1	83701050031	控制线束	Control Wiring Harness	1		
2	83701050032	手柄线束	Handle Wiring Harness	1		

