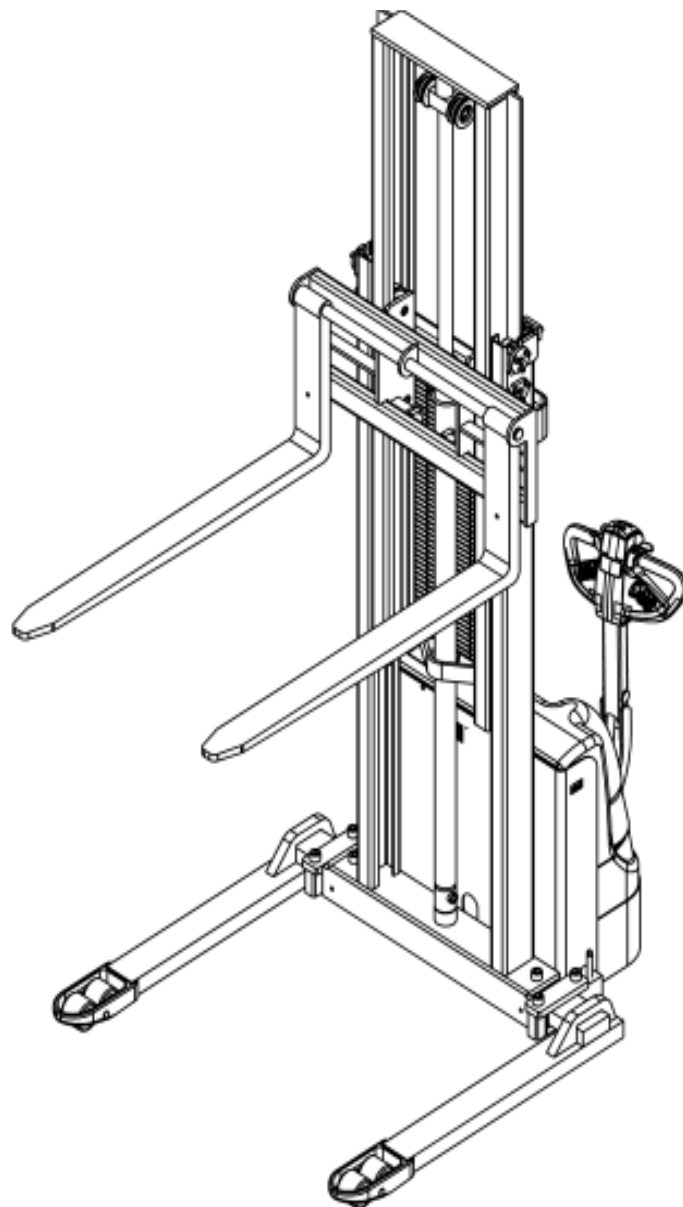


Part List

EB12E Series Electric Stacker



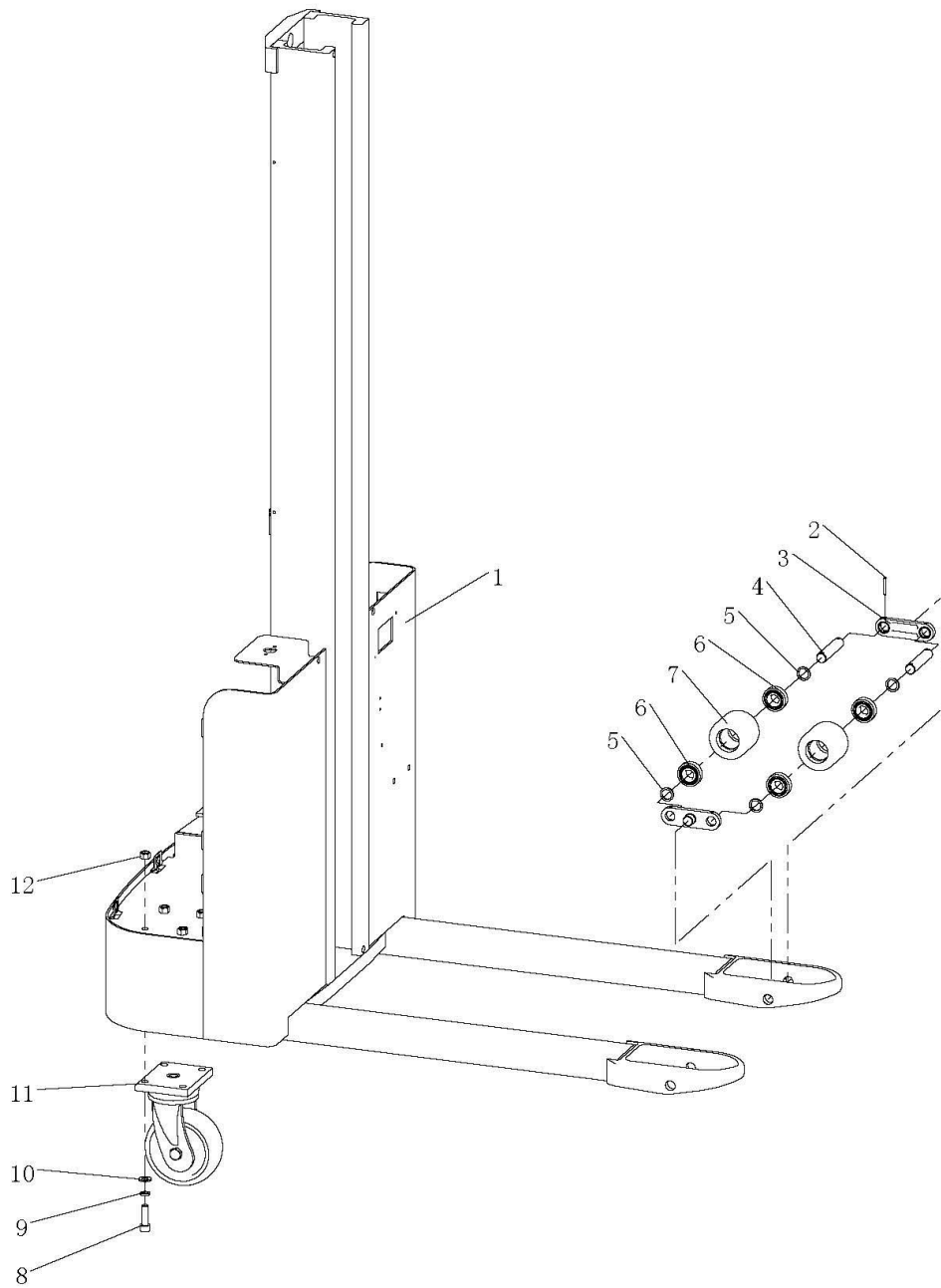
EKKO Material Handling Equipment Manufacturing, Inc.

Contents

1、 The Frame Assembly	- 2 -
1.1 Single-Stage Frame System	- 2 -
1.2 Two-Stage Frame System	- 4 -
1.3 Single-Stage Frame Cover Assembly	- 6 -
1.4 Two-Stage Frame Cover Assembly	- 7 -
1.5 Omni-Directional Wheel Assembly	- 8 -
2、 Driving Assembly	- 10 -
2.1 Driving Assembly	- 10 -
3、 Handle Assembly	- 12 -
3.1 Handle Assembly	- 12 -
4、 Hydraulic System	- 14 -
4.1 Single-stage Frame Hydraulic System	- 14 -
4.2 Two-stage Frame Hydraulic System	- 15 -
5、 Electric Assembly	- 16 -
5.1 Single-stage Frame Electric Assembly	- 16 -
5.2 Two-Stage Frame Electric Assembly	- 18 -
6、 Lighting System	- 20 -
6.1 Single-Stage Frame Lifting System	- 20 -
6.2 Two-Stage Frame Lifting System	- 22 -
6.3 Single-Stage Frame---Fork	- 24 -
6.4 Two-Stage Frame---Fork	- 25 -

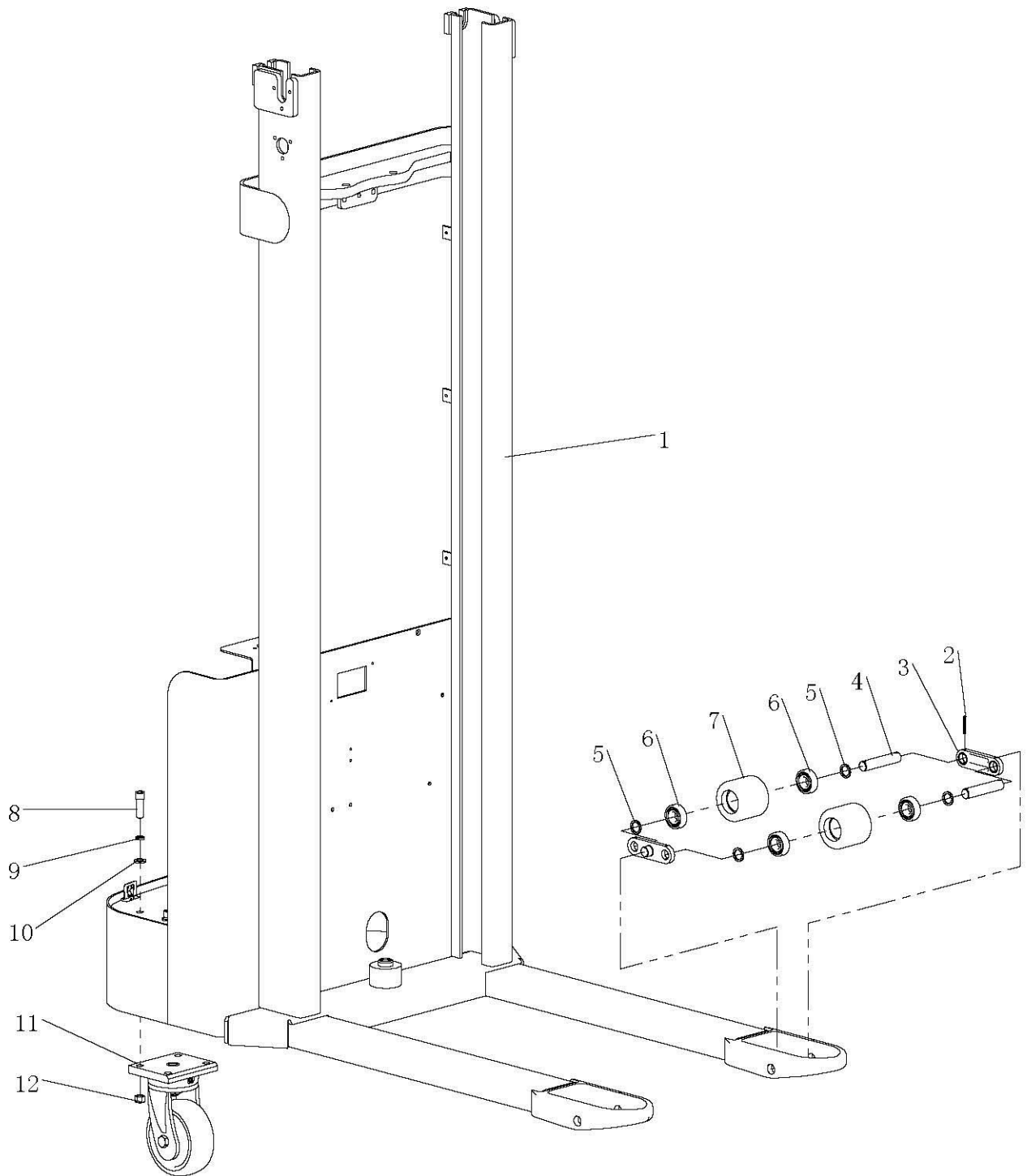
1、 The Frame Assembly

1.1 Single-Stage Frame System



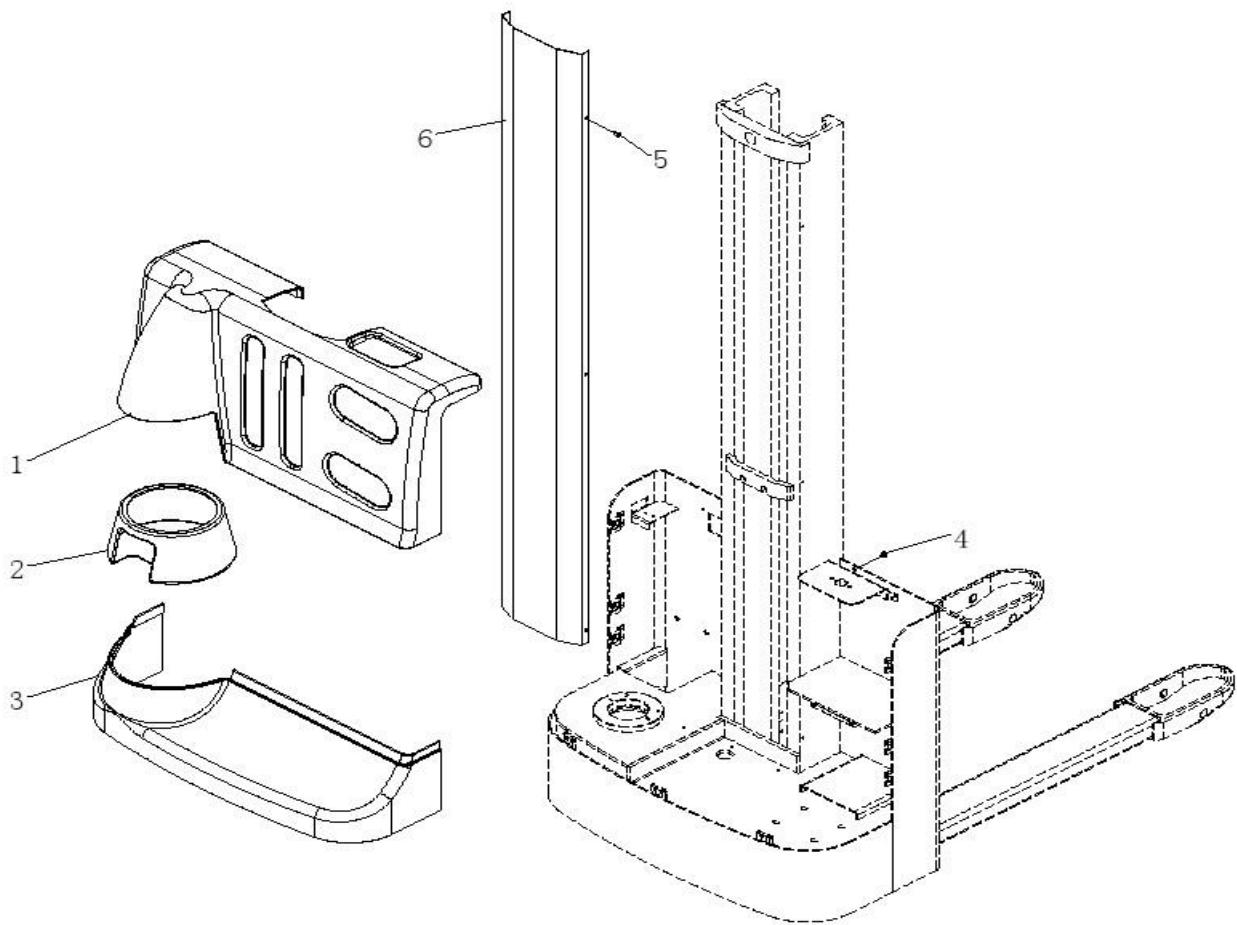
No.	Code No.	Name		Qty	Note
1	EB12E.01.01	Frame welded		1	
2	GB/T 879.1-2000	Elastic cylindrical pin	$\Phi 0.2 \times 1.37$	8	
3	DFL25.1-14D	Connecting plate		4	
4	EB12E-4H	Front axle (2)		4	
5	EB12E.1-9	Washer		8	
6	GB/T 276-94	Deep groove ball bearing	6204	8	
7	EB12E-5	Small wheel		4	
8	GB/T 70.1-2000	Hexagon socket head cap screws	M0.5 \times 1.57	4	
9	GB/T 93-1987	Spring washer	$\Phi 0.5$	4	
10	GB/T 95-2002	Flat washer	$\Phi 0.5$	4	
11	EB12E.5.5k	Steering wheel		1	
12	GB/T 6184-2000	Hexagon jam nut	M0.5	4	

1.2 Two-Stage Frame System



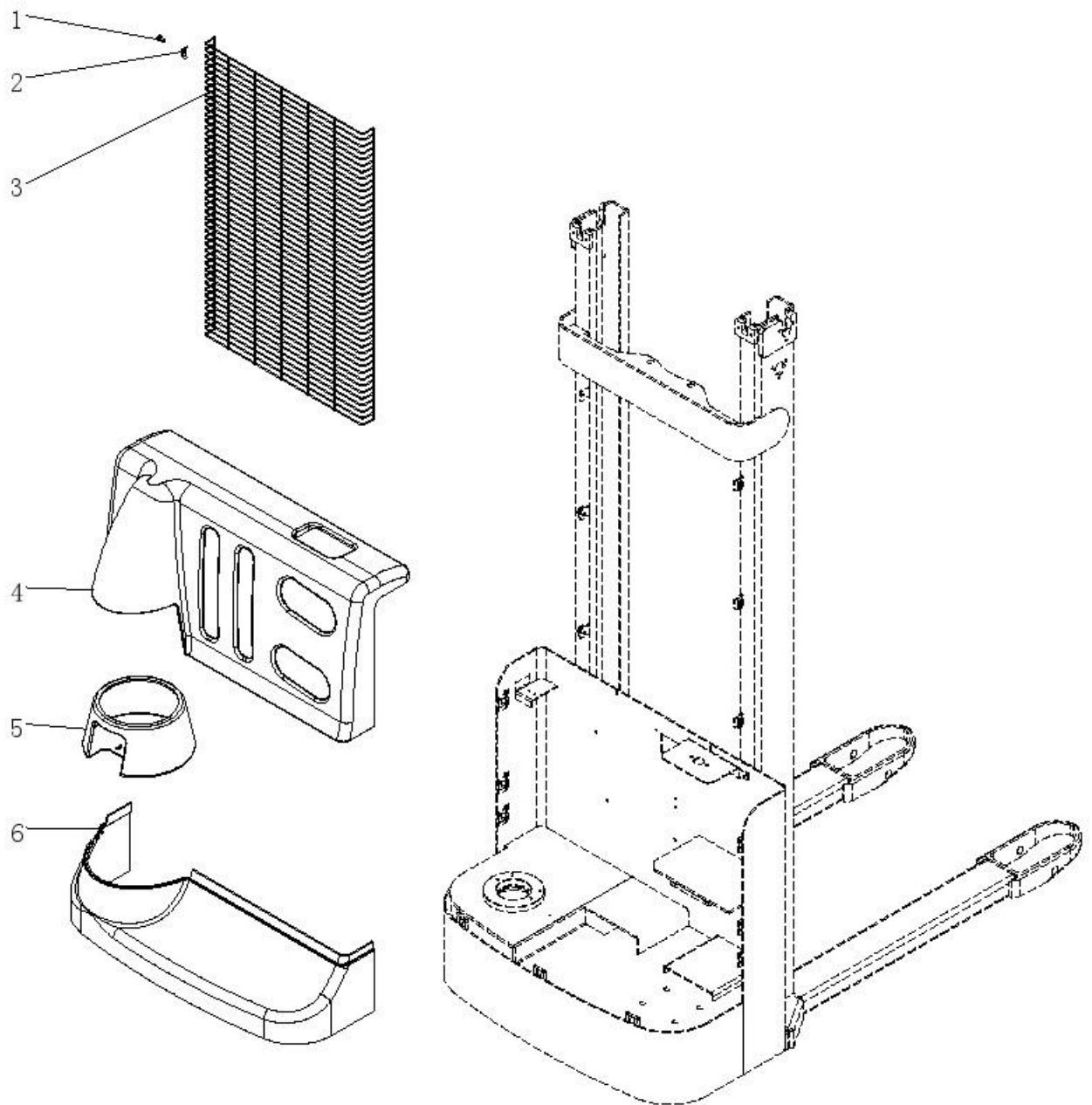
No.	Code No.	Name		Qty	Note
1	EB12E.01.01	Frame welded		1	
2	GB/T 879.1-2000	Elastic cylindrical pin	$\Phi 0.2 \times 1.37$	8	
3	DFL25.1-14D	Connecting plate		4	
4	EB12E-4H	Front axle (2)		4	
5	EB12E.1-9	Washer		8	
6	GB/T 276-94	Deep groove ball bearing	6204	8	
7	EB12E-5	Small wheel		4	
8	GB/T 70.1-2000	Hexagon socket head cap screws	M0.5 \times 1.57	4	
9	GB/T 93-1987	Spring Washer	$\Phi 0.5$	4	
10	GB/T 95-2002	Flat washer	$\Phi 0.5$	4	
11	EB12E.5.5k	Steering wheel		1	
12	GB/T 6184-2000	Hexagon jam nut	M0.5	4	

1.3 Single-Stage Frame Cover Assembly



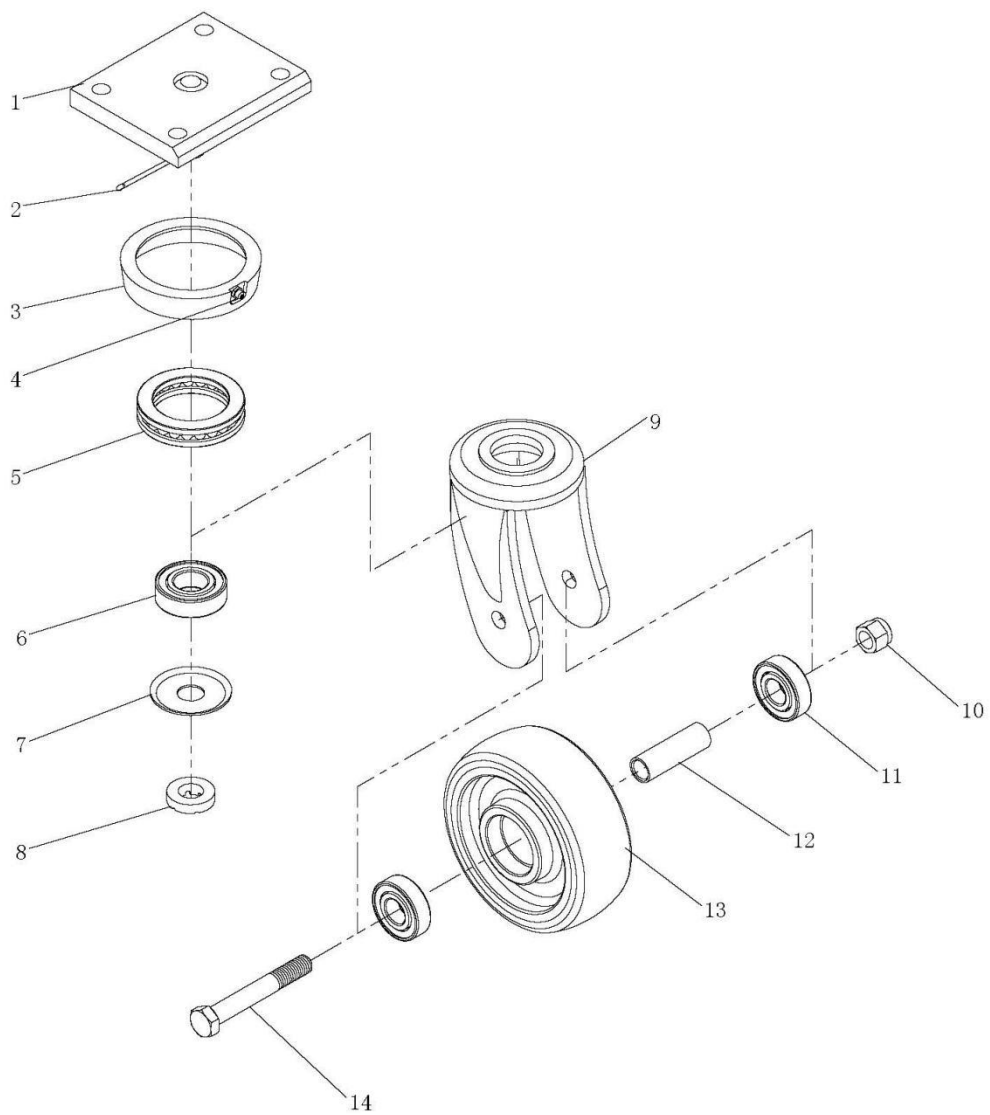
No.	Code No.	Name		Qty.	Note
1	EB12E16D.04-1	Cover		1	
2	EB12E.06-4	Handle bottom cover plate		1	
3	EB12E.06-3	The bottom Cover		1	
4	GB/T 70.3-2000	Hexagon socket countersunk flat cap head screw	M0.23×0.5	2	
5	GB/T 70.2-2000	Hexagon socket button head screws	M0.23×0.39	1	
6	EB12E16D.01-02	Filler panel		1	

1.4 Two-Stage Frame Cover Assembly



No.	Code No.	Name		Qty	Note
1	GB/T 818-2000	Cross recess pan head screw	M0. 23×0. 63	6	
2	EB12E. 0-6	Protective cover clip		6	
3	EB12E16. 0-4	Protective cover		1	
4	EB12E. 06-2	Large flat head cross screw		1	
5	EB12E. 06-4	Cover		1	
6	EB12E. 06-3	Handle bottom cover plate		1	

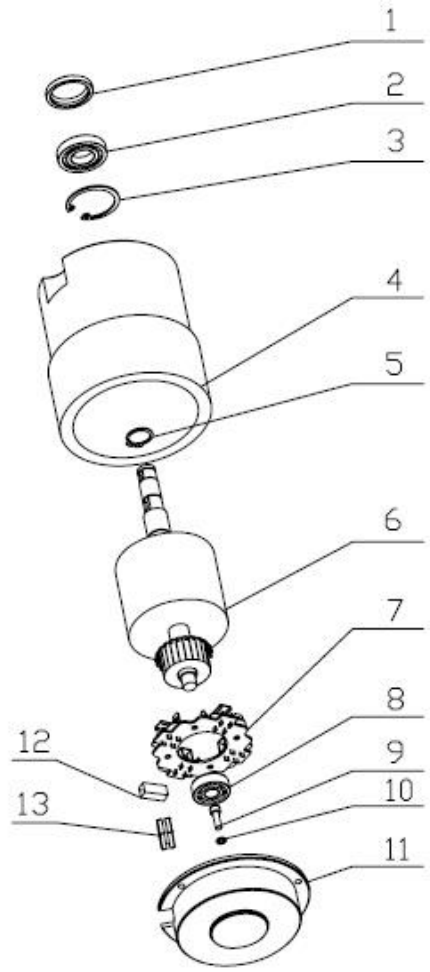
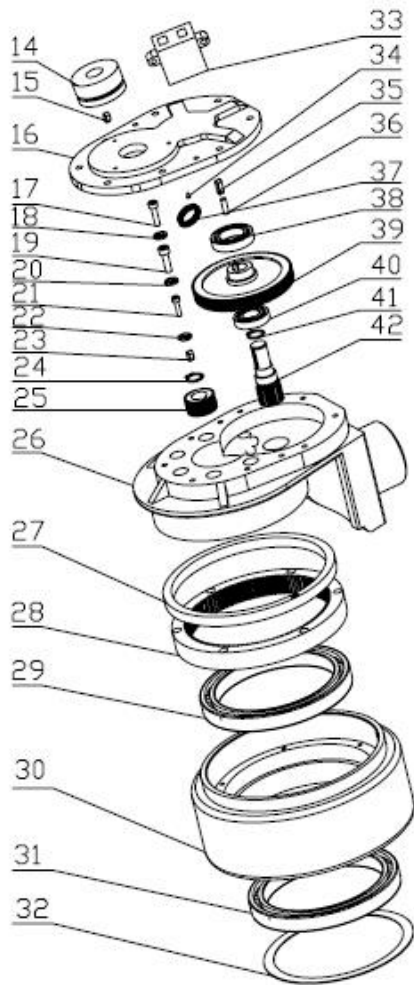
1.5 Omni-Directional Wheel Assembly



No.	Code No.	Name		Qty	Note
1	EB12E. 5. 5. 1G	Flange weld		2	
2	GB/T 91-2000	Split pin	Φ0.13×1.77	2	
3	EB12E. 5. 5-2	Dust cover		2	
4	JB/T 7940.1-1995	Straight hydraulic grease nipples	M0.23	2	
5	GB/T 301-1995	Thrust ball bearing	51111	2	
6	GB/T 276-94	Deep groove ball bearing	6205-2Z	2	
7	EB12E. 5. 5-3	Gland		2	
8	M20×1.5	Slotted nut		2	
9	EB12E. 5. 5-4G	Frame		2	
10	GB/T 889.1-2000	Hexagon lock nut	M0.55	2	
11	GB/T 276-94	Deep groove ball bearing	6204-2Z	4	
12	EB12E. 5. 5-6	Axle sleeve		2	
13	EB12E. 5. 5-7	Real wheel		2	
14	GB/T 5780-2000	Hexagon bolt	M0.55×3.93	2	

2、Driving Assembly

2.1 Driving Assembly

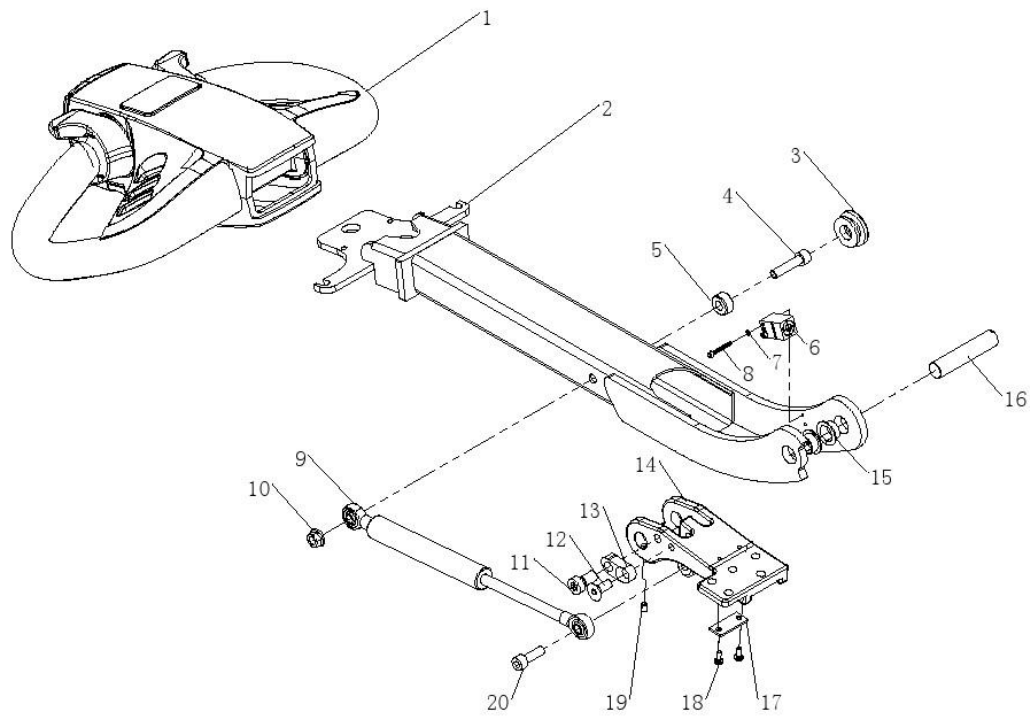


No.	Code No.	Name	-10-	Qty.	Note
-----	----------	------	------	------	------

1	GB/T13871-92	Oil seal	TC Φ 1.65 \times Φ 0.8 \times	1	
2	GB/T276-94	Bearing	6004RS	1	
3	GB893.1-86	Circlip For Hole	Φ 1.65	1	
4	ZD-HZDC-310-002	Chassis parts		1	
5	GB894.1-1986	Ring-Sield	Φ 0.59	1	
6	ZD-HZDC-320-002	rotor		1	
7	ZD-HCDC-340-001	Brush voke parts		1	
8	GB/T276-94	Bearing	6201RS	1	
9	GB/T70.1-2000	Socket head cap screw	M0.2 \times 0.63	3	
10	GB/T93-1987	Spring washer	Φ 0.2	3	
11	ZD-HCDC-361-001	Rear end-plate		1	
12	ZD-HCDC-330-001	Brush		4	
13	ZD-HCDC-380-001	Protective ring		1	
14	ZD-HZDC-362-001	Brake		1	
15	GB/T1096-2003	Key	0.2 \times 0.2 \times 0.3	1	
16	1115-200001-0B	Cover		1	
17	GB/T70.1-2000	Socket head cap screw	M0.23 \times 0.8	8	
18	GB/T93-1987	Spring Washer	Φ 0.23	8	
19	GB/T70.1-2000	Socket head cap screw	M0.3 \times 1.37	5	
20	GB/T93-1987	Spring Washer	Φ 0.3	5	
21	GB/T70.1-2000	Socket head cap screw	M0.2 \times 0.8	6	
22	GB/T93-1987	Spring washer	Φ 0.2	6	
23	GB/T1096-2003	Key	0.2 \times 0.2 \times 0.55	1	
24	GB894.1-1986	Ring-Sield	Φ 0.63	1	
25	1115-200005-0B	Small skewed tooth		1	
26	1121-210001-00	Box		1	
27	GB/T13871-92	Oil seal	TC Φ 6.1 \times Φ 6.77 \times 0.39	1	
28	1115-200002-0B	Straight teeth ring		1	
29	GB/T276-94	Bearing	61824-2RS	1	
30	1115-220000-0B	Driving wheel		1	
31	GB/T276-94	Bearing	61824-2RS	1	
32	6118003	Dust cover		1	
33	JX6-2	Connection box		1	
34	JB/T7940.1-1995	Forced filling oil cup		1	
35	GB/T1096-2003	Key	0.2 \times 0.2 \times 0.8	1	
36	GB/T119.1-2000	Bearing	Φ 0.2 \times 0.59	2	
37	GB/T13871-92	Oil seal	TC Φ 0.63 \times Φ 1.1 \times 0.27	1	
38	GB/T276-94	Bearing	61905-2Z	1	
39	1115-200004-0B	Big skewed tooth		1	
40	GB/T276-94	Bearing	16003-2Z	1	
41	GB894.1-1986	Ring-Sield	Φ 0.59	1	
42	1115-200003-0B	Small straight teeth		1	

3、 Handle Assembly

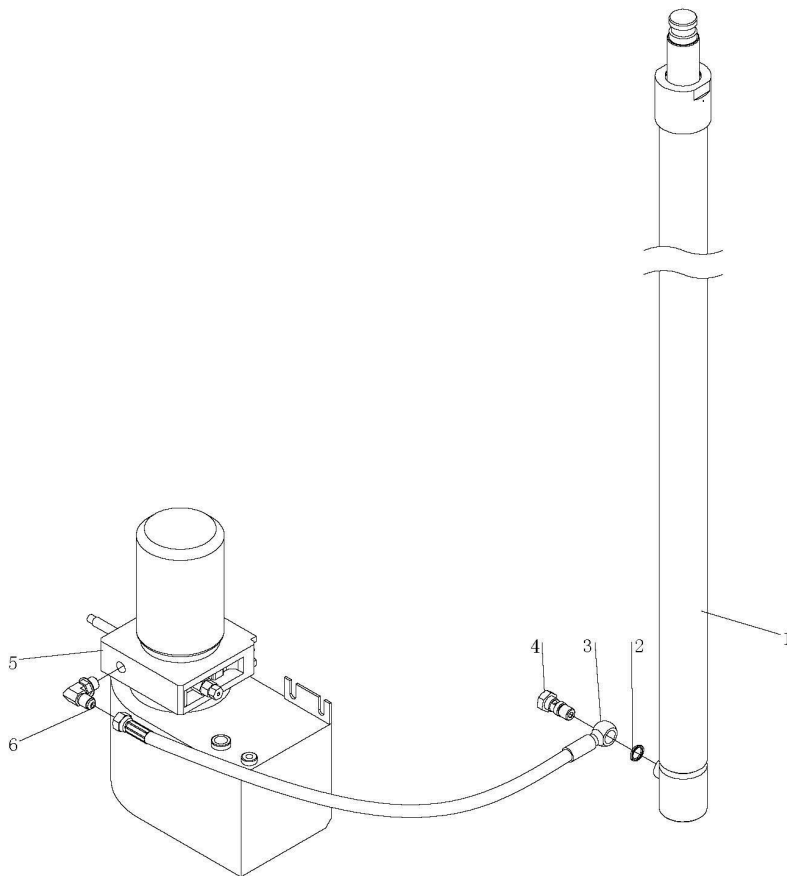
3.1 Handle Assembly



No.	Code No.	Name		Qty.	Note
1	TY-01.20	Handle		1	
2	EB12E.01.02.01	Handle lever welded		1	
3	EB12E.8-1	Crash roll		1	
4	GB/T 70.1-2000	Hexagon socket head cap screws	M0.3×1.37	1	
5	EB12E.03-09	Sleeve		1	
6	CJF17-05PA	Proximity switch		1	
7	GB/T 93-1987	Spring Washer	Φ0.11	2	
8	GB/T 70.1-2000	Hexagon socket head cap screws	M0.11×1	2	
9	EB12E.01.02.02	Spring Washer assembly		1	
10	GB/T 6177.1-2000	Hexagon nuts with flange	M0.3	1	
11	GB/T 70.1-2000	Hexagon socket head cap screws	M0.39×0.8	1	
12	GB/T 70.3-2000	Hexagon socket countersunk flat cap head screw	M0.3×0.8	1	
13	EB12E.03-03	Stop block		1	
14	EB12E.03-02	Joint holder		1	
15	TY-02.22	Complex casing with shoulder Φ18×Φ16×10		2	
16	EB12E.03-07	Joint Axis		1	
17	EB12E.03-04	Tension disc		1	
18	GB/T 818-2000	Cross recessed pan head screw	M0.16×0.39	2	
19	GB/T 77-2000	Hexagon socket set screw with flat point	M0.23×0.3	1	
20	GB/T 70.1-2000	Hexagon socket head cap screws	M0.3×1	1	

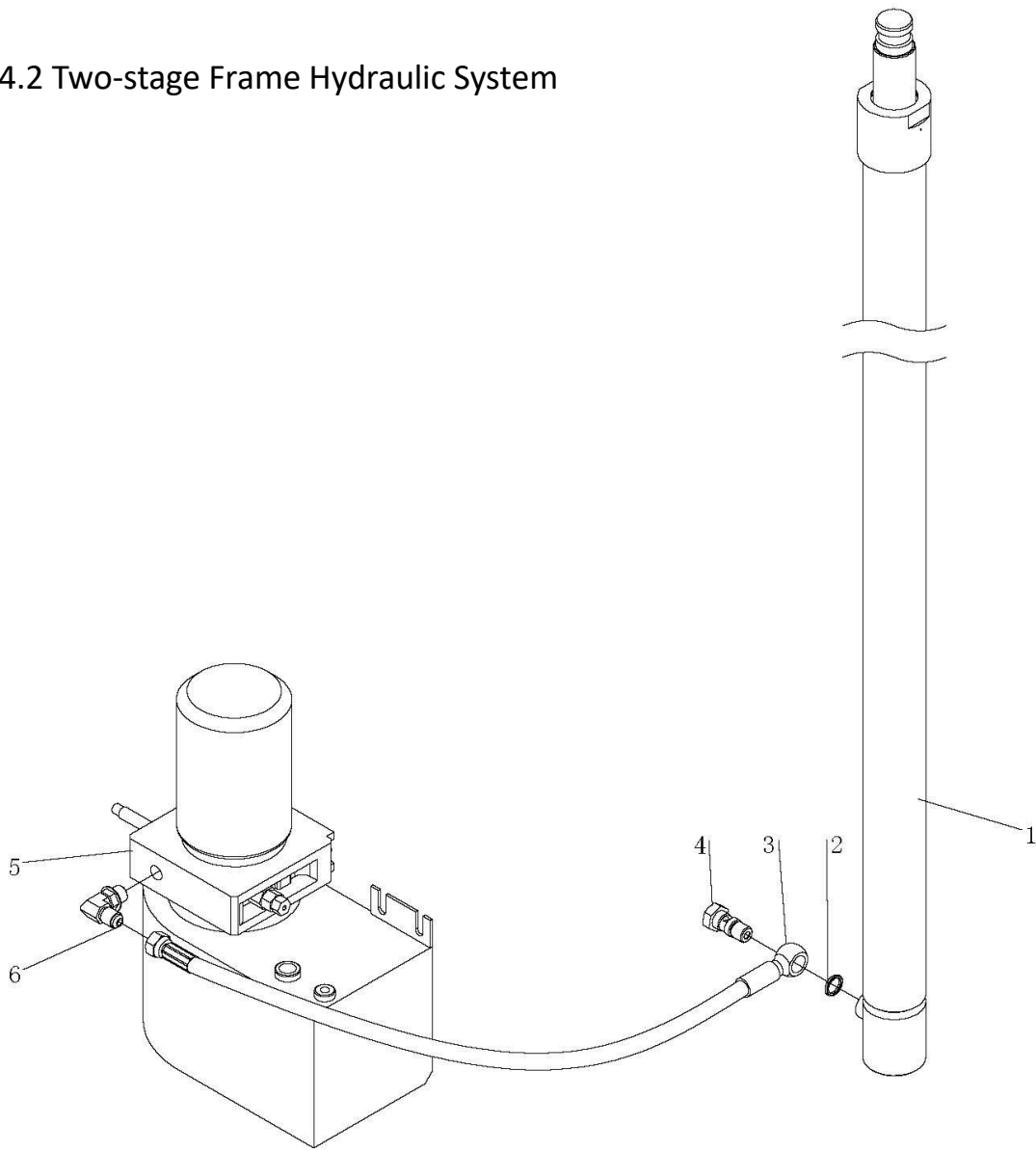
4. Hydraulic System

4.1 Single-stage Frame Hydraulic System



No.	Code No.	Name		Qty.	Note
1	EB12E16D. 03	Oil cylinder module		1	
2	GB982-77	Gasket assembly	Φ0.63	1	
3	EB12E. 05. 1-4	Oil connection		1	
4	EB12E. 05-03	High pressure pipe		1	
5	CG1646. 05. 1-3	Adjustable Adapter		1	
6	EB12E16D. 01. 03	Power unit	24V/2.2KW	1	

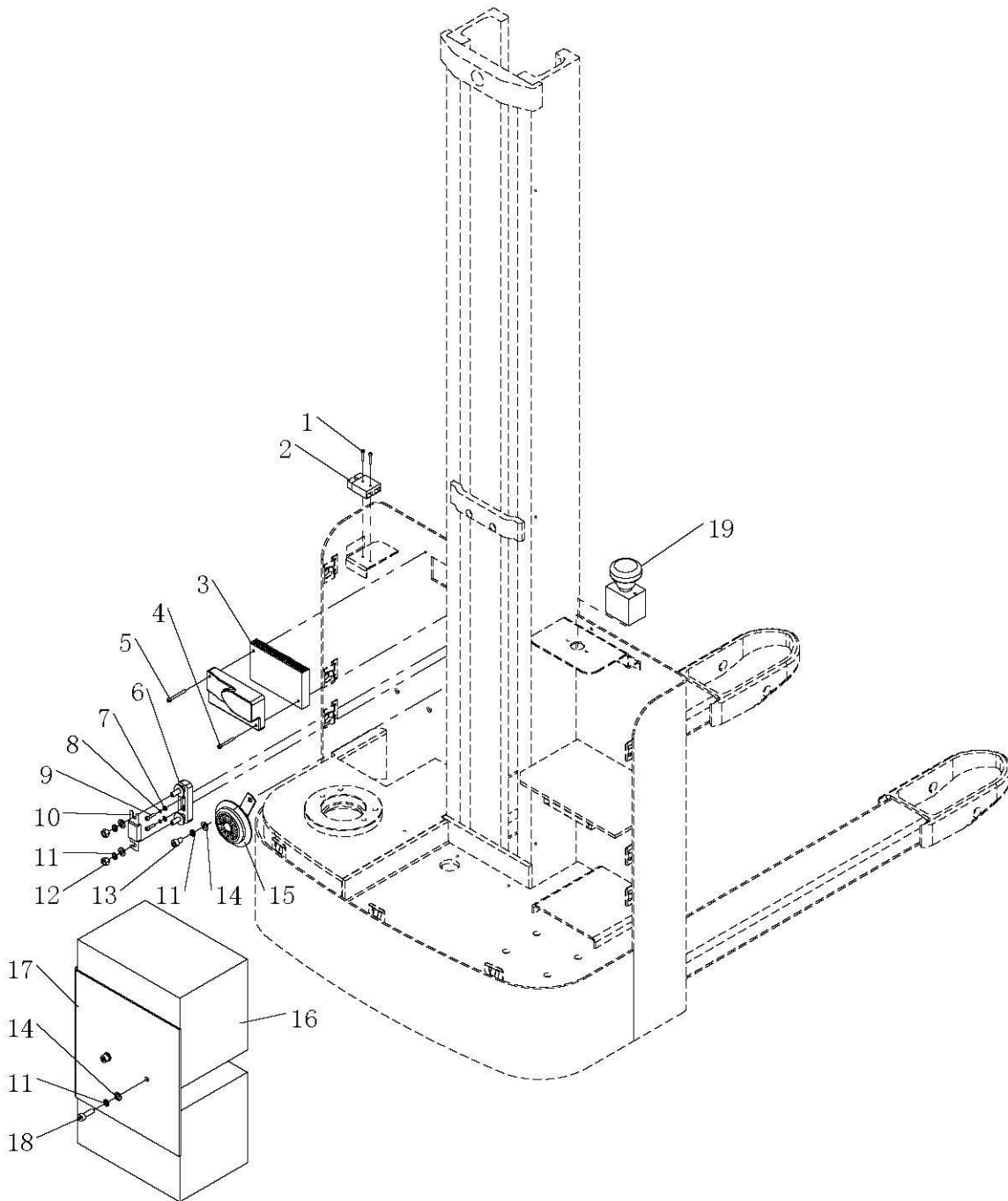
4.2 Two-stage Frame Hydraulic System



No.	Code No.	Name		Qty.	Note
1	EB12E. 05	Oil cylinder module		1	
2	GB982-77	Gasket assembly	$\Phi 0.7$	1	
3	EB12E. 04-1	Rubber tube		1	
4	EB12E. 8-6	Oil connection		1	
5	EB12E. 01. 03. 03	Power unit	24V/2. 2KW	1	
6	EB12E. 4-3H	90° splice		1	

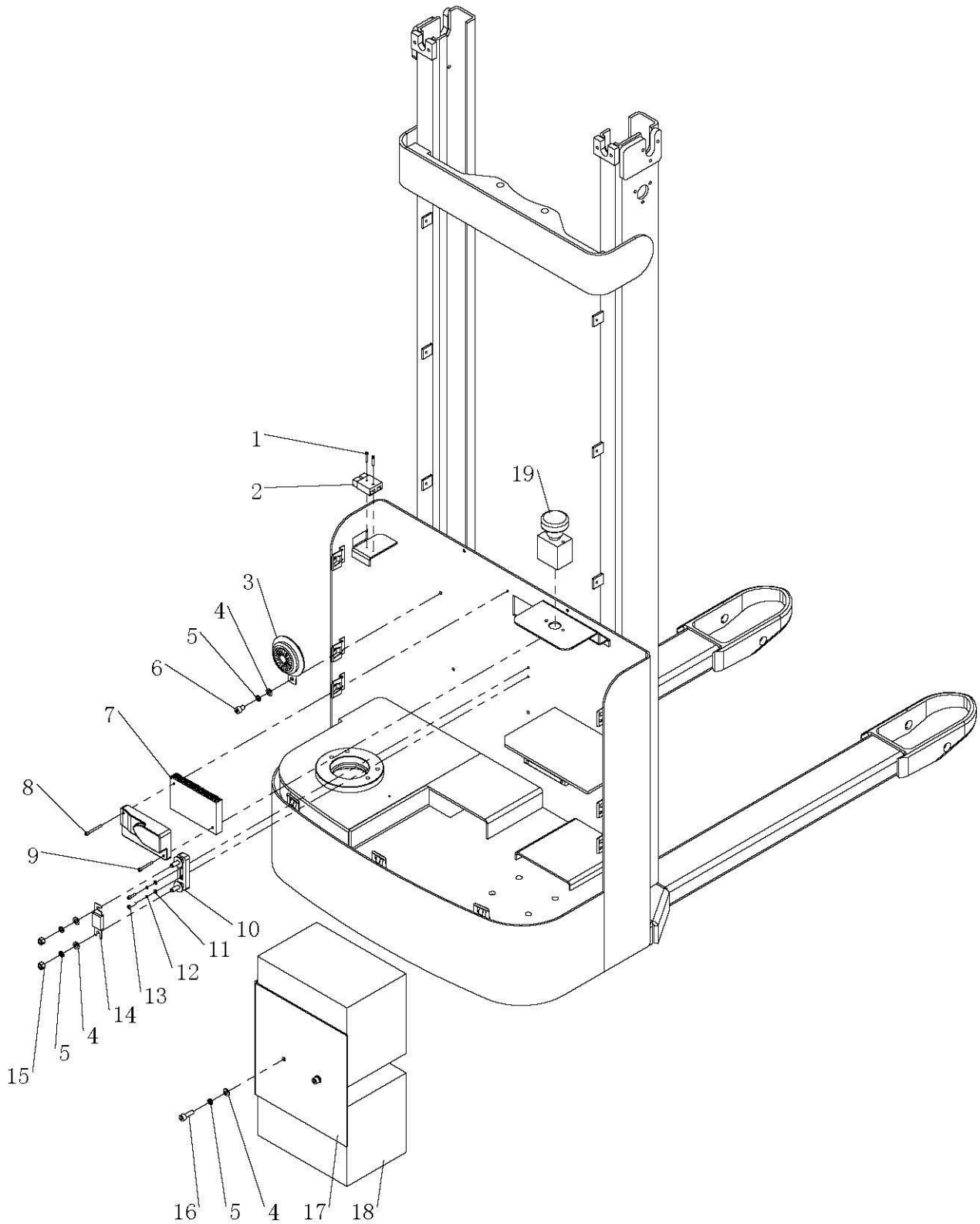
5、 Electric Assembly

5.1 Single-stage Frame Electric Assembly



No.	Code No.	Name		Qty	Note
1	GB/T 70.1-2000	Hexagon socket head cap screws	M0. 11×0. 8	2	
2	TY-01. 2	Charger socket TSB50A / 600A		1	
3	EB12E. 01. 05. 02	Electric Control Assembly		1	
4	GB/T 70.1-2000	Hexagon socket head cap screws	M0. 16× 1. 37	1	
5	GB/T 70.1-2000	Hexagon socket head cap screws	M0. 2×1. 57	1	
6	TY-02. 32	Fuse holder		1	
7	GB/T 95-2002	Flat washer	Φ0. 16	2	
8	GB/T 93-1987	Spring washer	Φ0. 16	2	
9	GB/T 70.1-2000	Hexagon socket head cap screws	M0. 2×0. 63	2	
10	TY-01. 4	Fuse	CNP-100A	1	
11	GB/T 93-1987	Spring Washer	Φ0. 3	5	
12	GB/T 41-2000	Hexagon nut	M0. 3	2	
13	GB/T 70.1-2000	Hexagon socket head cap screws	M0. 3×0. 5	1	
14	GB/T 95-2002	Flat washer	Φ0. 3	5	
15	TY-01. 18	Horn DC24-Φ125		1	
16	DC100AH-12V	Battery		2	
17	EB12E. 01. 03-1	Battery limit panel		1	
18	GB/T 70.1-2000	Hexagon socket head cap screws	M0. 3×1	2	
19	TY-01. 14	Emergency stop switch ZDK31-250		1	

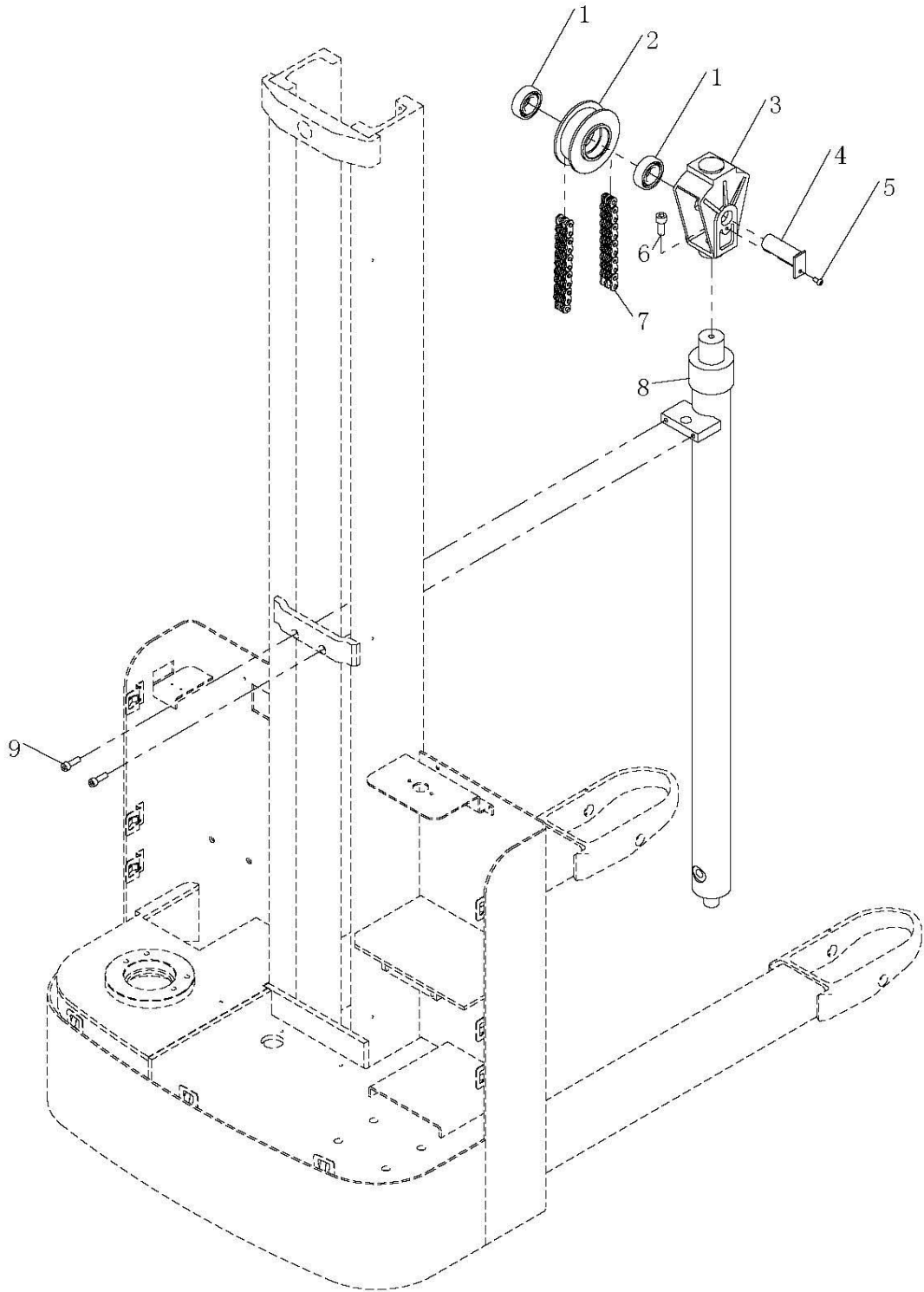
5.2 Two-Stage Frame Electric Assembly



No.	Code No.	Name		Qty.	Note
1	GB/T 70.1-2000	Hexagon socket head cap screws	M0.11×0.8	2	
2	TY-01.2	Charging socket TSB50A / 600A		1	
3	TY-01.18	Horn DC24-Φ125		1	
4	GB/T 95-2002	Flat washer	Φ0.3	5	
5	GB/T 93-1987	Spring washer	Φ0.3	5	
6	GB/T 70.1-2000	Hexagon socket head cap screws	M0.3×0.5	1	
7	SL13.01.05.02	Electric control assembly		1	
8	GB/T 70.1-2000	Hexagon socket head cap screws	M0.16×1.57	1	
9	GB/T 70.1-2000	Hexagon socket head cap screws	M0.16×1.37	1	
10	TY-02.32	Fuse holder		1	
11	GB/T 95-2002	Flat washer	Φ0.16	2	
12	GB/T 93-1987	Spring washer	Φ0.16	2	
13	GB/T 70.1-2000	Hexagon socket head cap screws	M0.16×0.63	2	
14	TY-01.4	Fuse	CNP-100A	1	
15	GB/T 41-2000	Hexagon nut	M0.3	2	
16	GB/T 70.1-2000	Hexagon socket head cap screws	M0.3×1	2	
17	EB12E.01.03-1	Battery limit panel		1	
18	DC100AH-12V	Battery		2	
19	TY-01.14	Emergency stop switch ZDK31-250		1	

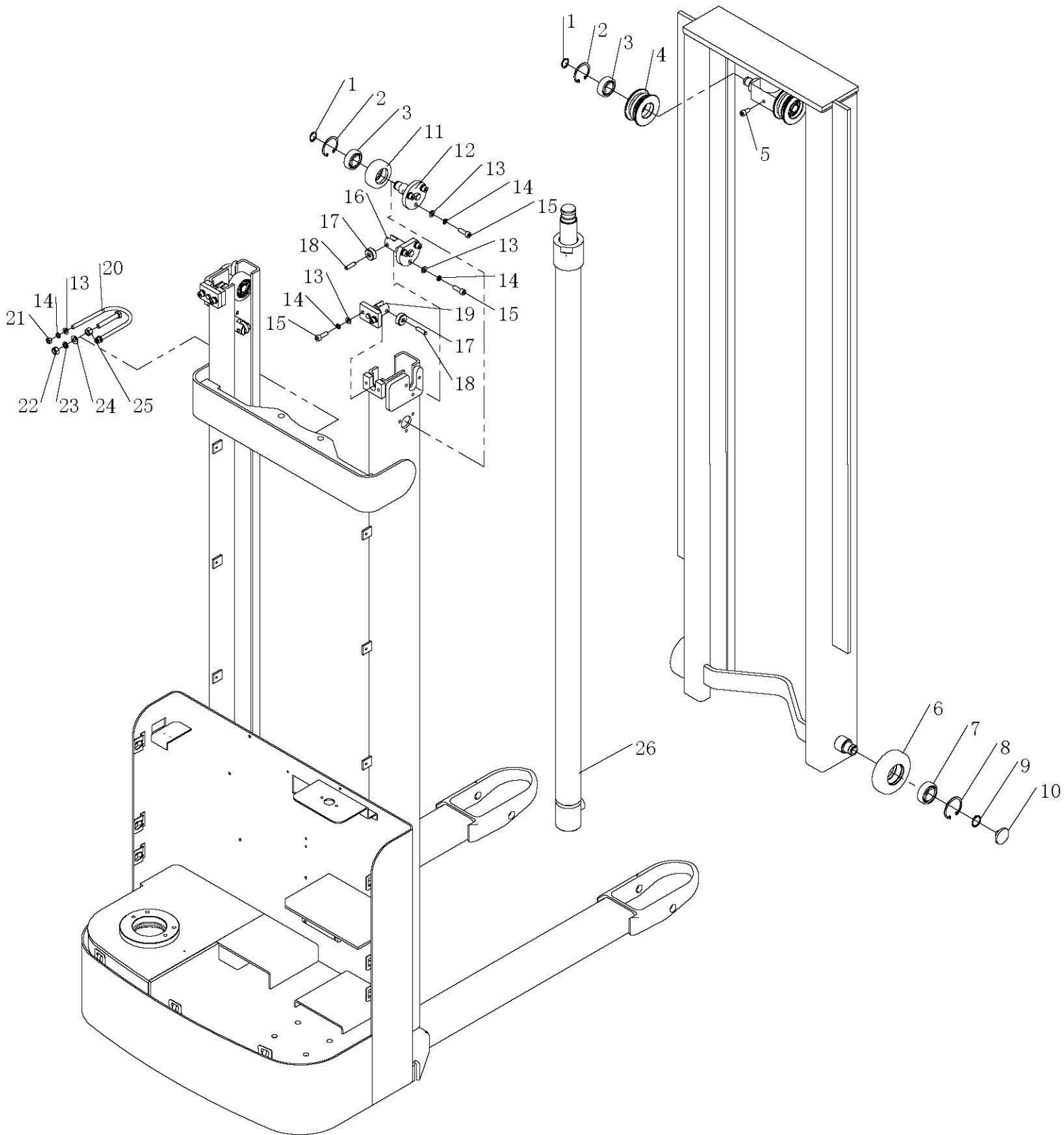
6、 Lighting System

6.1 Single-Stage Frame Lifting System



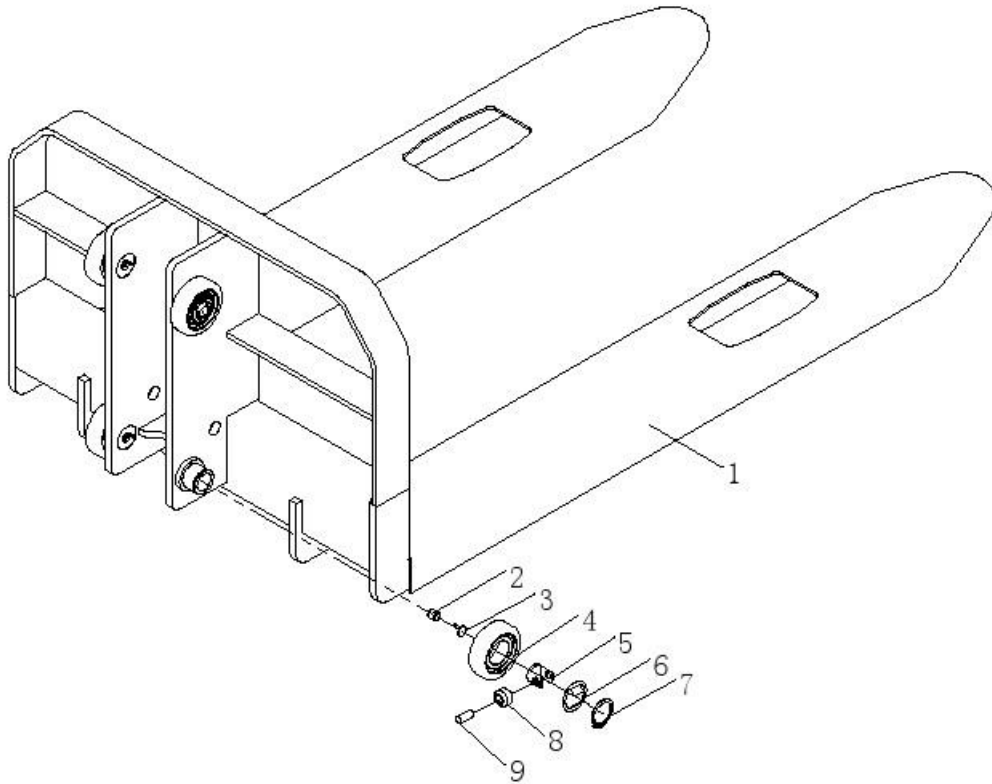
No.	Code No.	Name		Qty	Note
1	GB/T 276-94	Deep groove ball bearing	6205	2	
2	EB12E.4-6	Chain pulley wheel		1	
3	EB12E.4-1H	Chain pulley seat		1	
4	EB12E.4.1	Chain wheel shaft		1	
5	GB/T 70.2-2000	Hexagon socket button head screws	M0.23×0.5	1	
6	GB/T 70.1-2000	Hexagon socket head cap screws	M0.39×1	1	
7	ISO-LH1046	Leaf chain		1	
8	EB12E16D.03	Oil cylinder		1	
9	GB/T 70.1-2000	Hexagon socket head cap screws	M0.3×1	2	

6.2 Two-Stage Frame Lifting System



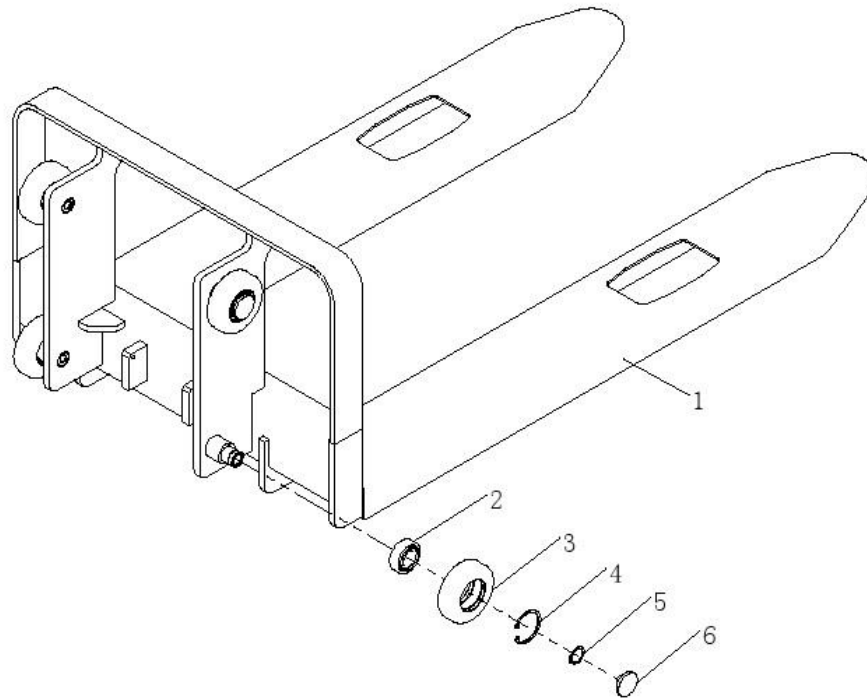
No.	Code No.	Name		Qty.	Note
1	GB 894.1-86	Circlip for shaft	$\Phi 0.8$	4	
2	GB 893.1-86	Circlip For Hole	$\Phi 1.85$	4	
3	GB/T 276-94	Deep groove ball bearing	6204	4	
4	EB12E.2-5	Chain wheel		2	
5	GB/T 70.1-2000	Hexagon socket head cap screws	M0.3 \times 0.63	1	
6	EB12E.2-1	Inner frame roller wheel		2	
7	GB/T 276-94	Deep groove ball bearing	6205	2	
8	GB 893.1-86	Circlip For Hole	$\Phi 2$	2	
9	GB 894.1-86	Circlip for shaft	$\Phi 1$	2	
10	EB12E.3-3	Lateral pressure pad		2	
11	EB12E.7.1-3	Guide wheel		2	
12	EB12E.7.1	Guide wheel axle base		2	
13	GB/T 95-2002	Flat washer	$\Phi 0.3$	18	
14	GB/T 93-1987	Spring washer	$\Phi 0.3$	18	
15	GB/T 70.1-2000	Hexagon socket head cap screws	M0.3 \times 1	16	
16	EB12E.12	Limit wheel carrier right and left		2	
17	EB12E.11-3	Limit wheel		4	
18	GB/T 119-2000	Straight pin	$\Phi 0.3 \times 1.18$	4	
19	EB12E.11	Rear limit wheel carrier		2	
20	EB12E.0-2	Oil cylinder beam clamp		1	
21	GB/T 6184-2000	Hexagon lock nut	M0.3	2	
22	GB/T 6184-2000	Hexagon lock nut	M0.39	1	
23	GB/T 93-1987	Spring Washer	$\Phi 0.39$	1	
24	GB/T 95-2002	Flat washer	$\Phi 0.39$	1	
25	GB/T 41-2000	Hexagon nut	M0.39	1	
26	EB12E.05	Oil cylinder		1	

6.3 Single-Stage Frame----Fork



No.	Code No.	Name	Qty.	Note
1	EB12E16D.02.01	Pallet frame welded	1	
2	CRA78.3-12S	Adjusting screw	4	
3	CRA78.3-12S	The gasket	4	
4	CRA78.3-12S	Main roller	4	
5	CRA78.3-12S	Small frame	4	
6	CRA78.3-12S	Steering washer	4	
7	GB 894.1-86	Circlip for shaft	4	
8	CRA78.3-12S	Roller	4	
9	CRA78.3-12S	Roller shaft	4	

6.4 Two-Stage Frame----Fork



No.	Code No.	Name		Qty	Note
1	EB12E.03.01	Pallet frame welded		1	
2	GB/T 276-94	Deep groove ball bearing	6205	4	
3	EB12E.3-1	Pallet frame roller wheel		4	
4	GB 893.1-86	Circlip For Hole	Φ2	4	
5	GB 894.1-86	Circlip for shaft	Φ1	4	
6	EB12E.3-3	Lateral pressure pad		4	

The power of interpretation of this part catalogue will be preserved by the manufacturer eventually.