



Parts Manual

EPC18LI/EPC20LI/EPC25LI



Instructions for use

Please read this manual carefully and operate the vehicle safety.

- Do not operate this vehicle without training.
- Please comply with ISO3691 “Safety Specification for Motor Vehicles Industry”.
- Please do not modify or change the repair parameters, including adjusting the pressure. Any loss or damage to the vehicle resulting from such actions will be your responsibility, and doing so will void our warranty commitment.

SPECIAL WARNING:

The company is committed to innovation and sustainable development. As part of this commitment, we continually improve the technology of our products. Therefore, we reserve the right to make changes and improvements to any product described in this specification without prior notice.

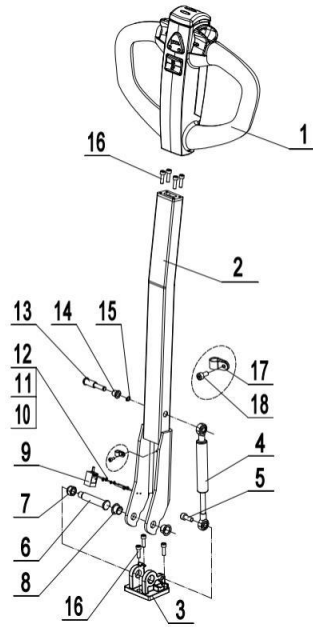


Figure 1

Steering System					
NO.	Code	Figure	Name	Qty	Remark
1	11003000049	TA400A-5	Electronic handle	1	
2	8B20200000022	QBM1503-0311000	Handle bonding	1	
3	7200600000170	QBM1503-0300004	bracket	1	
4	72009010011	QBM1503-0300006	Gas spring	1	
5	22101600034	GB70.1	Cylindrical head screw M8x20	1	Standard part
6	72003001302	QBM1503-0300005S	pin	1	
7	22403000010	GB889.1	Lock nut M12	1	Standard part
8	23100100033	SF-15120	Flanged bushing 15	2	
9	11002000025	CJF17E-05PA	Photoelectric switch	1	
10	22500100001	GB95	Flat washer 3	2	Standard part
11	2250120000012	GB93	Spring washer 3	2	Standard part
12	22101600008	GB70.1	Cylindrical head screw M3x25	2	Standard part
13	72003001215	QBM1503-0300002	pin	1	
14	72003001216	QBM1503-0300003	Shaft sleeve	1	
15	22600900011	GB894	Retainer ring8	1	Standard part
16	22101600087	GB70.1	Cylindrical head screw M6x16	7	Standard part
17	40000000548		Plastic wire clip	1	
18	22101600010	GB70.1	Cylindrical head screw M4x8	1	Standard part

Table 1-1

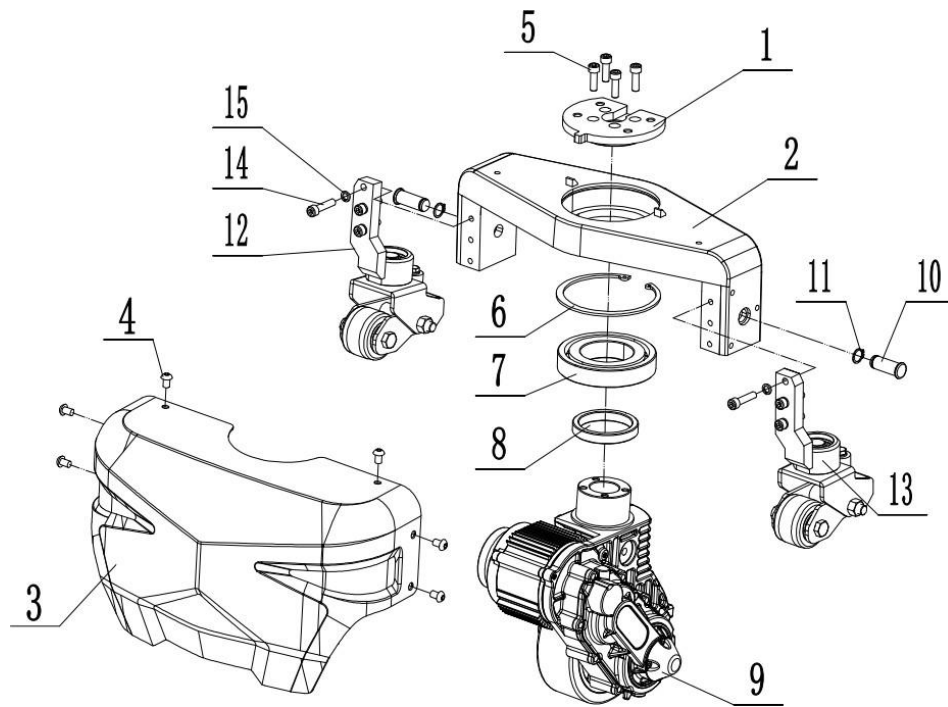


Figure 2

Drive System					
NO.	Code	Figure	Name	Qty	Remark
1	8B20200000036	QBM1503-0211000	Connecting socket	1	
2	72006000208	QBM1503-0200002B	Supporting seat	1	
3	72002005364	QBM1504-0200003	fender	1	
4	22101700007	GB70.2	Flat round head screw M8x12	6	Standard part
5	22101600034	GB70.1	Cylindrical head screw M8x20	4	Standard part
6	22600700010	GB893.1	Hole with elastic retainer 120	1	Standard part
7	23000100050	GB292	Deep groove ball bearing 6213	1	Standard part
8	72004001389	QBM1503-0210002	retainer	1	
9	71001300016	QBM1503-0210001	Drive wheel assembly 48V	1	
10	72003000569	QBA15-0000001	pin	2	
11	71001300016	GB894	Retaining ring 16	2	Standard part
12	8B20400000004	QBM1503-1701000	Left balance wheel assembly	1	
13	8B20400000005	QBM1503-1702000	Right balance wheel assembly	1	
14	22101600035	GB70.1	Cylindrical head screw M8x25	6	Standard part
15	22501200004	GB93	Spring washer 8	6	Standard part

Table 2-1

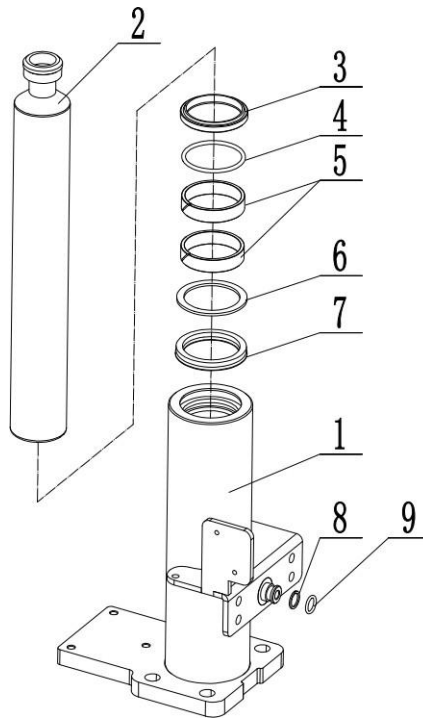


Figure 3

Cylinder group					
NO.	Code	Figure	Name	Qty	Remark
1	8B20200200019	QBM1504-1211001	Cylinder welding	1	
2	72003001304	QBM1504-1211007	Plunger 40(medium)	1	
	72003001313	QBM1504- 1211007A	Plunger 40(low)	1	
3	21000300004	DHS40	Dust ring 40	1	
4	21000100097	GB3452.1	O-ring d40x2.65	1	
5	40000000562		Guide set D45xd40x9.7	2	
6	40000000563		Stop ring D50xd40x1.9	1	
7	21000400003	UHS40	Seal ring 40	1	
8	40000000564		Retaining ring D13xd10.2x1	1	
9	21000100087	GB1235	O-ring D13x1.9	1	Standard part

Table 3 -1

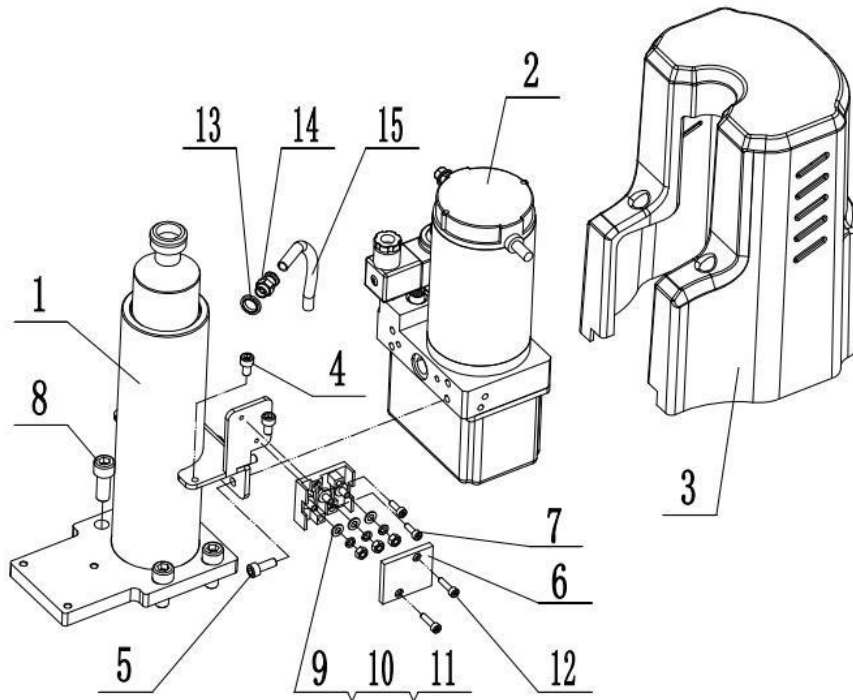


Figure 4

Hydraulic System					
NO.	Code	Figure	Name	Qty	Remark
1	73007000345	QBM1504-1211000	Cylinder assembly	1	
	73007000347	QBM1504-1211000A	Cylinder assembly (low)	1	
2	73002000115	QBM1504-1200007	Hydraulic station 48V 0.7Kw	1	
3	75000400089	QBM1503-1200002	Hydraulic station housing	1	
4	22101600024	GB70.1	Cylindrical head screw M6x10	2	Standard part
5	22101600087	GB70.1	Cylindrical head screw M6x16	4	Standard part
6	11004000006	QBM1503-0000005	Motor wire junction box (three)	1	
7	22101600011	GB70.1	Cylindrical head screw M4x12	2	Standard part
8	22101600045	GB70.1	Cylindrical head screw M10x25	4	Standard part
9	22500100003	GB97.1	Flat washer – Class A 5	3	Standard part
10	22501200002	GB93	Spring washer 5	3	Standard part
11	22400300001	GB6170	Hexagon nut 5	3	Standard part
12	22101600012	GB70.1	Cylindrical head screw M4x16	2	Standard part
13	72004001423		Combined washer 10	1	
14	73006000126		Hose fitting M10x1	1	
15	73004000606		Hose D6	1	

Table 4-1

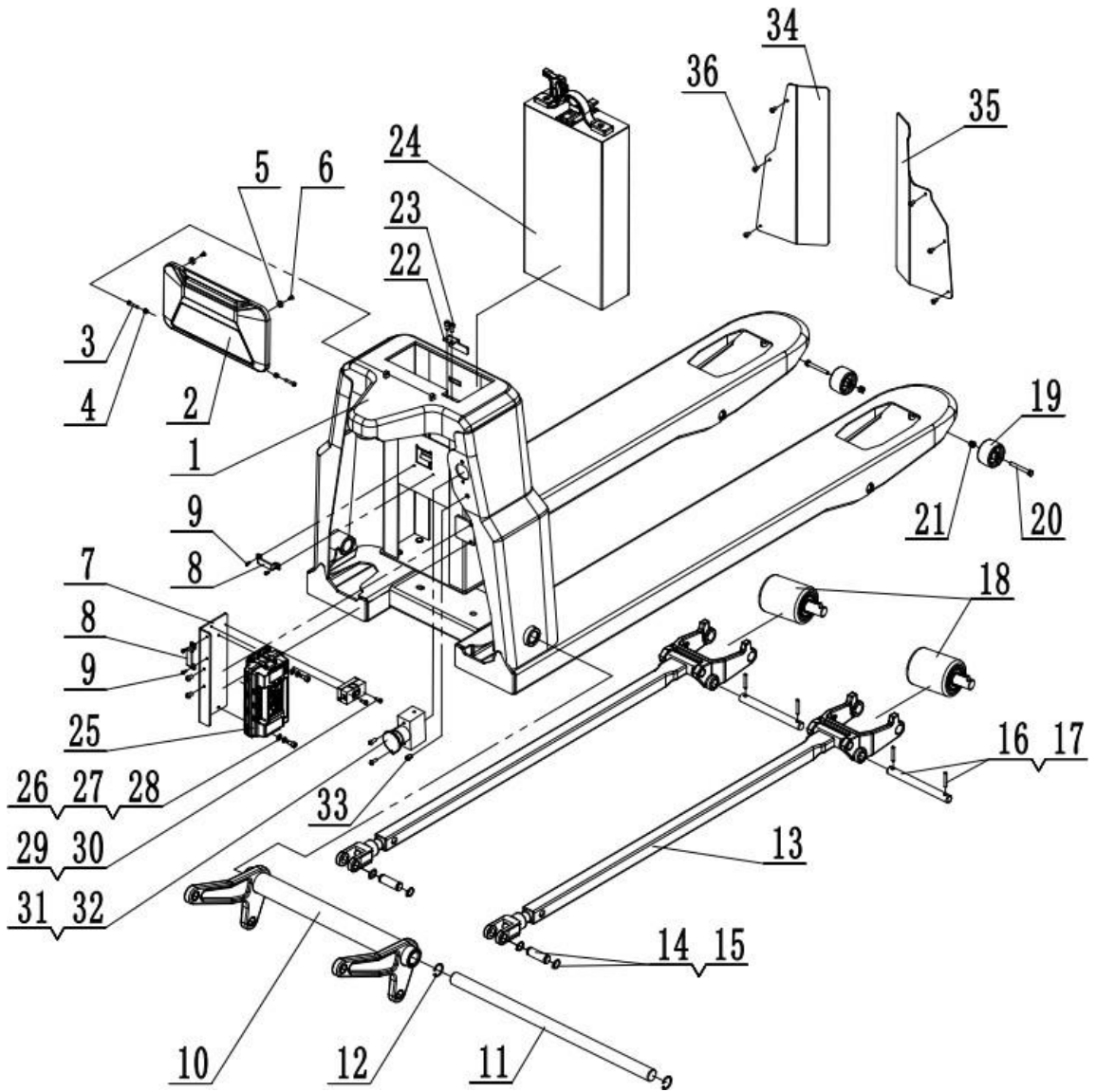


Figure 5

Frame system					
NO.	Code	Figure	Name	Qty	Remark
1	8B20200200005	QBM1504-0451115	Frame welded to 550×1150	1	
	8B20200200012	QBM1504-0481115	Frame welded 680×1150	1	
2	75000100152	QBM1504-0900001	Electric cabin cover	1	
3	22101600185	GB70.1	Cylindrical head screw M4x35	2	Standard part
4	22400300009	GB6170	Hexagon nut M4	2	Standard part
5	7900040000003	BBM-0000002	Strong magnetic round sink hole	2	
6	2210430000001	GB846	Self-tapping screw ST3.5×9.5	2	Standard part
7	72002005363	QBM1504-0410001	Controller mounting plate	1	

8	72001007011	QBM1503-0000004	Front press plate	2	
9	22101700027	GB70.2	Flat round head screw M3x6	4	
10	8B20400100003	QBM1504-24000-550	Rocker arm assembly 550	1	
	8B20400100004	QBM1504-24000-680	Rocker arm assembly 680	1	
11	72003000069	QBA15-20007A	Major axis 550	1	
	72003000070	QBA15-20007B	Major axis 680	1	
12	22600700001	GB893.1	Hole retaining ring 25	2	Standard part
13	8B20010700013	QBM1504-1500000	Connecting rod system	1	
14	72003000005	SBA-00005	Double slot pin 16 x 50	2	
15	22600900003	GB894.1	Retaining ring 16	4	
16	72003000001	SBA-00003	Double hole pin shaft 16x158	2	
17	22800700003	GB879.2	Elastic cylindrical pin 5x32	4	
18	71003000112	QBA15-1500110C	Single wheel assembly (low)	2	
19	71003000002	SBA-00001	Guide wheel black 50x36	2	
20	22000300002	GB5782	Outer hexagon bolt M6x50	2	
21	22403000004	GB889.1	Lock nut M6	2	
22	7200200001106	QBM1503-0000002	Battery cable clamp	1	
23	22101600024	GB70.1	Cylindrical head screw M6x10	2	
24	11009000132	QBM1503-1380100A	Battery assembly 48V10Ah	1	1.5T
	11009000132	QBM1503-1380100	Battery assembly 48V20Ah	1	2T
25	11007000078	DP2	controller	1	
26	22500100005	GB95	Flat washer 6	2	
27	22501200003	GB93	Spring washer 6	2	
28	22101600025	GB70.1	Cylindrical head screw M6x12	2	
29	15000900016	QBA25H-1350004	Small fork fuse box	1	
30	22101600098	GB70.1	Cylindrical head screw M4x10	2	
31	1100600000044	BBM-1340003	Emergency power off switch	1	
32	2210170000023	GB70.2	Flat round head screw M5x14	2	
33	11000100030	SS-006-21	Pilot lamp	1	
34	72002005395	QBM1504-0450002	Left chest cover 550	1	
	72002005396	QBM1504-0480002	Left chest cover 680	1	
35	72002005397	QBM1504-0450003	Right chest cover	1	

			550		
	72002005398	QBM1504-0480003	Right chest cover 680	1	
36	22101700018	GB70.2	Flat round head screw M5×10	6	

Table 5-2

Rock arm assembly

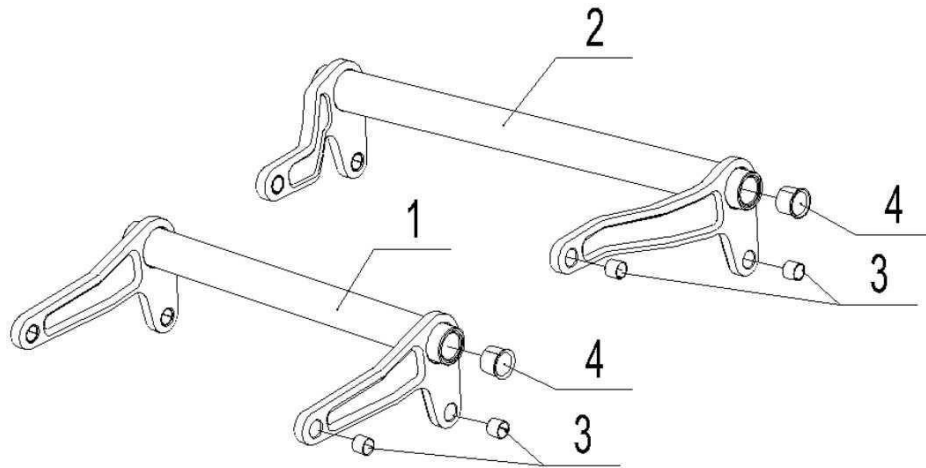


Figure 6

QBA15 Rocker Arm Assembly					
NO.	Code	Figure	Name	Qty	Remark
1	8B13400000005	QBA15-24000-550	Rocker arm assembly 550	1	
	8B132004003	QBA15-24010	Rocker arm welded 550	1	
2	8B13400000006	QBA15-24000-680	Rocker arm assembly 680	1	
	8B131003004	QBA15-24020	Rocker arm welded 680	1	
3	23100100009	SF-1-1615	Composite bushing	4	
4	23100100032	SF-1F-25215	Flanged composite bushing	2	

Table 6-1

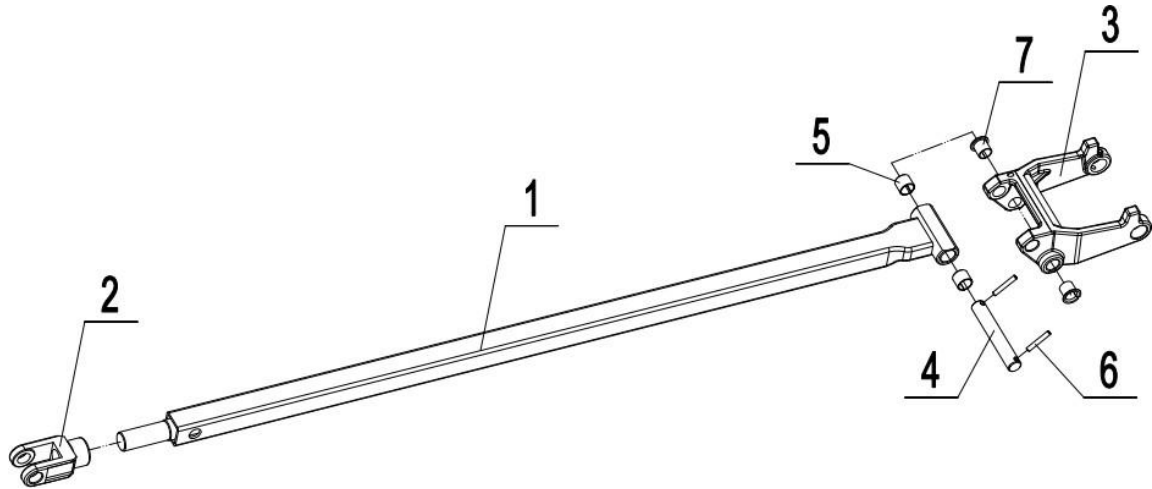


Figure 7

Connecting rod wheel frame					
NO.	Code	Figure	Name	Qty	Remark
1	8B20400100005	QBM1504-1511220	Connecting rod assembly 1220	1	
	8B20400100006	QBM1504-1511150	Connecting rod assembly 1150	1	
2	72006000005	SBA-00031	Coupling head	1	
3	72006000201	QBM1503-1510001B	Wheel holder	1	
	72006000200	QBM1503-1510001A	Wheel holder (low)	1	
4	72003000010	SBA-00033	Double-hole pin shaft $\Phi 16 \times 100$	1	
5	23100100009	SF-1-1615	Composite bushing $16 \times 18 \times 15$	2	
6	22800700003	GB879.1	Elastic cylindrical pin 5×32	2	Standard part
7	23100100036	SF-1-16170	Flanged composite bushing	2	

Table 7-1

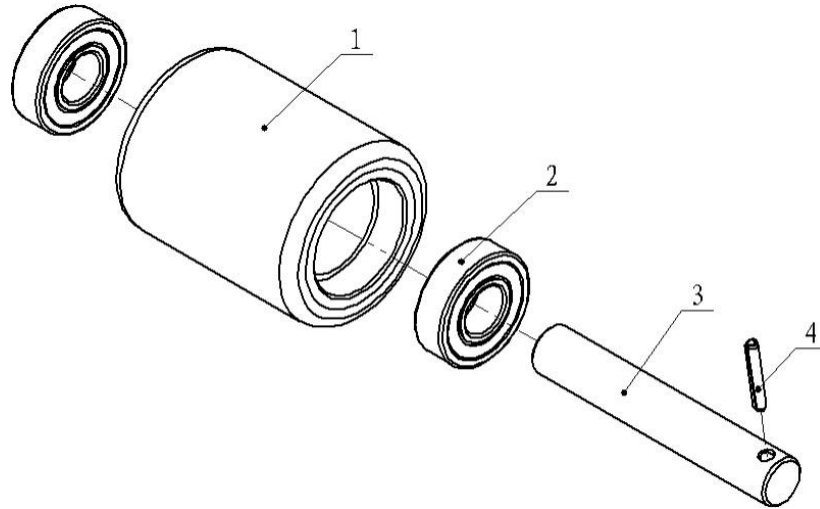


Figure 8

QBM single wheel assembly					
NO.	Code	Figure	Name	Qty	Remark
1	71003000111	QBA15-1500111C	Yellow polyurethane wheel Φ 74×93	2	
2	23000100001	GB276	Deep groove ball bearing 6204	4	
3	72003000009	SBA-00021	Single-hole pin shaft Φ 20 x 122	2	
4	22800700003	GB879.1	Elastic cylindrical pin Φ 5×32	2	
	71003000112	QBA15-1500110C	Yellow polyurethane wheel Φ 74×93	2	

Table 8-1

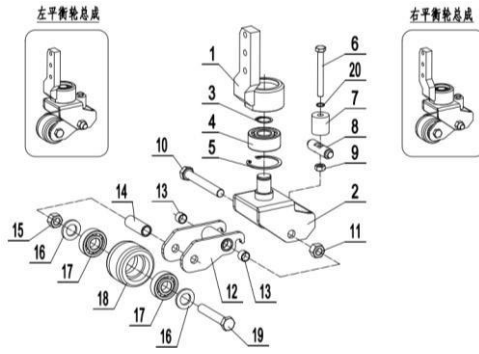


Figure 9

QBM1503 Balance Wheel					
NO.	Code	Figure	Name	Qty	Remark
1	8B20200000037	QBM1503-1701100	Balance wheel support (left)	1	
	8B20200000037	QBM1503-1702100	Balance wheel support (right)	1	
2	8B20200000044	QBM1503-1702200	Balance wheel frame welding	1	
3	22600900002	GB894.1	Retaining ring 20	1	Standard part
4	2300200000001	GB296	Bearing 3204A-2RS	1	Standard part
5	22600700002	GB893.1	Hole retaining ring 47	1	Standard part
6	22000300052	GB5782	Hexagon bolt M8×70	1	Standard part
7	75000300105	QBM1503-1702002	Nylon washer	1	
8	72003001222	QBM1503-1702001	Connecting shaft	1	
9	22403000006	GB889.1	Lock nut M8	1	Standard part
10	2200030000049	GB5782	Hexagon bolt M12x90	1	Standard part
11	22403000010	GB889.1	Lock nut M12	1	Standard part
12	8B20200000045	QBM1503-1702300	Movable frame welding	1	
13	23100100003	SF-1-1210	Composite bushing 1210	2	
14	72004001393	QBM1503-1702401	cannula	1	
15	22403000010	GB889.1	Lock nut M12	1	Standard part
16	22500200006	GB95	Plain washer 16	2	Standard part
17	23000100003	GB276	Bearing 6203	2	Standard part
18	71003000035	QBA15-26008	wheel	1	
19	2200030000048	GB5782	Hexagon bolt M12x70	1	Standard part
20	22500200007	GB95	Flat washer 8	1	Standard part

Table 9-1

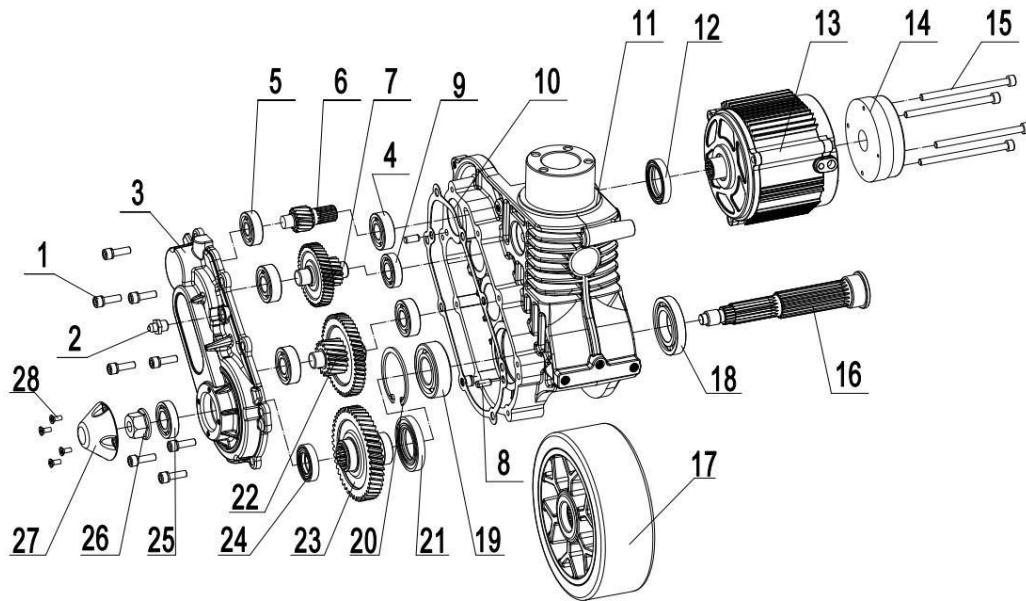


Figure 10

QBM1503 drive wheel assembly					
NO.	Code	Figure	Name	Qty	Remark
1	2210160028	GB70.1	Cylindrical head screw M6*20	8	Loaded mat
2	4000000549		Butter nozzle M8	1	
3	4000000550	F.DN04-002.01	Left box	1	
4	23000100058	GB276	High speed bearing 6202 2RS	4	
5	23000100057	GB276	High speed bearing 6201 2RZ	1	
6	4000000551	QBM1503-0210101	Input shaft 15 teeth 14 splines	1	
7	4000000552	QBM1503-0210102	Two-axis gear 15 teeth +43 teeth	1	
8	22800200004	GB119.2	Locating pin Φ6 x 10	2	
9	23000100042	GB276	High speed bearing 6002 2RS	1	
10	4000000553	QBM1503-0210103	Grease-resistant paper pad	1	
11	4000000554	F.DN04-001.01	Right-hand box	1	
12	2100050000020	TC20*35*7	Skeleton oil seal Φ20*Φ35*7	1	
13	11008000046	QBM1503-0210104	Motor 48V850W 4200rpm	1	
14	4000000555	QBM1503-0210105	Electromagnetic brake 48V 6N.m	1	
15	22101600155	GB70.1	Cylindrical head screw M6*90	3	Loaded mat

16	40000000556	F.DN04-041.01	Four-axis spline shaft 19 splines +15 splines	1	
17	40000000557	QBM1503-0210106	Aluminum wheel $\Phi 160*55$	1	
18	23000100054	GB276	Ball bearing 6006 2RS	1	
19	23000100055	GB276	Ball bearing 6205 2RS	1	
20	22600700029	GB893.1	Hole ring $\Phi 52$	1	
21	2100050000018	TC30*52*7	Skeleton oil seal $\Phi 30*\Phi 52*7$	1	
22	40000000558	QBM1503-0210107	Three axis gear 16 teeth +47 teeth	1	
23	40000000559	F.DN04-042.01	Four axis gear 46 teeth +15 splines	1	
24	2100050000019	TC30*42*7	Skeleton oil seal $\Phi 30*\Phi 42*7$	1	
25	23000100056	GB276	Ball bearing 6003 2RS	1	
26	40000000560		Nut with lock M14*1.5	1	
27	40000000561	QBM1503-0210108	Plastic cover four holes black	1	
28	22100300012	GB819.2	Cross countersunk screw M4*10	4	

Table 10-2

Cylinder repair kit					
NO.	Code	Figure	Name	Qty	Remark
1	21000100096	GB1235	O-ring D56x3.1	1	Table 3-1/3
2	21000300004	DHS40	Dust ring 40	1	Table 3-1/4
3	21000100097	GB3452.1	O-ring d40x2.65	1	Table 3-1/5
4	21000400003	UHS40	Seal ring 40	1	Table 3-1/8
5	21000100087	GB1235	O-ring D13x1.9	1	Table 3-1/11

List of wearing parts					
NO.	Code	Figure	Name	Qty	Remark
1	23100100033	SF-15120	Flanged bushing 15	2	Table 1-1/8
2	23000100050	GB276	Deep groove ball bearing 6213	1	Table 2-1/7
3	71003000002	SBA-00001	Guide wheel black 50x36	2	Table 5-1/12
4	23100100009	SF-1-1615	Composite bushing	4	Table 6-1/3
5	23100100032	SF-1-25215	Flanged composite bushing	2	Table 6-1/4
6	23100100009	SF-1-1615	Composite bushing	2	Table 7-1/5
7	23100100036	SF-1-16170	Flanged composite bushing	2	Table 7-1/7
8	23000100001	GB276	Deep groove ball bearing 6204	4	Table 8-1/2
9	71003000008	SBA-00013C	Yellow core PU fork wheel Φ 80×70	2	Table 8-1/3
10	8B01100800 3	SBA-00014C	Yellow polyurethane wheel Φ 80×70	2	Table 8-1/3
11	8B01100803 2	SBA-00016C	Yellow polyurethane wheel Φ 74×70	2	Table 8-1/3
12	2300200000001	GB296	Bearing 3204A-2RS	1	Table 9-1/4
13	23100100003	SF-1-1210	Composite bushing 1210	2	Table 9-1/13
14	71003000035	QBA15-26008	wheel	1	Table 9-1/18

